



<b>Motore/Engine 15LD 400</b>		
cilindrata/displacement	cm <sup>3</sup>	401
cilindri/cylinders		1
alesaggio/bore	mm	82
corsa/stroke	mm	86

versione/version	- <i>avviatore autoavvolgente</i>
<b>2A6800</b>	- <i>decompressione automatica</i>
con/with	- <b>recoil starting and automatic compression release</b>

versione/version	- <i>avviatore autoavvolgente e avviamento elettrico</i>
<b>2A6810</b>	- <i>decompressione automatica antireverse</i>
con/with	- <b>recoil and electrical starting</b>
	- <b>automatic antireverse compression release</b>

<b>INDICE DELLE TAVOLE</b>	<b>SPARE PARTS TABLE INDEX</b>
----------------------------	--------------------------------

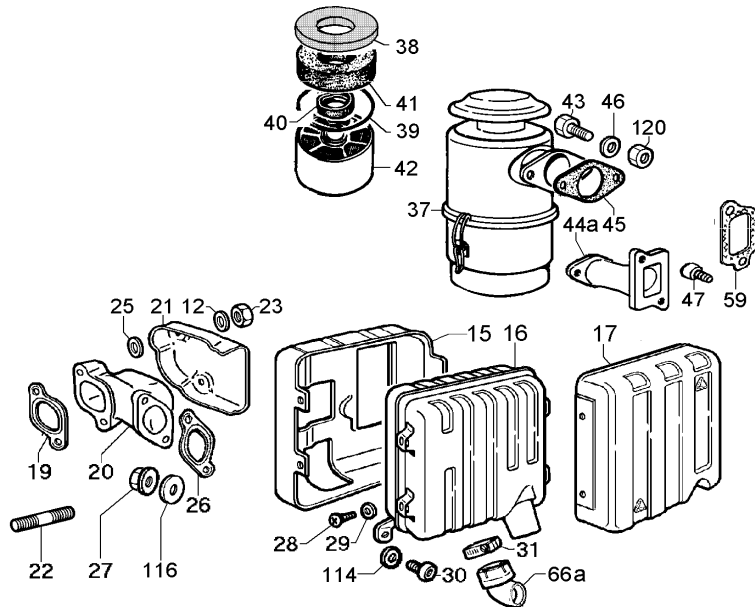
Tav./Table	<b>A 1-A 2</b>	<b>ASPIRAZIONE E SCARICO</b>	<b>INTAKE AND EXHAUST</b>
Tav./Table	<b>B 1-B 2-B 3</b>	<b>BIELLA/PISTONE ALBERO A GOMITO VOLANO/BASAMENTO FLANGIATURA</b>	<b>CONNECTING ROD/PISTON CRANKSHAFT FLYWHEEL/CRANKCASE FLANGING</b>
Tav./Table	<b>C 1-C 2-C 3-C 4</b>	<b>TESTA/CAPPELLO BIL. VALVOLE/DISTRIBUZIONE REGOLATORE GIRI</b>	<b>CYLINDER HEAD ROCKER ARM BOX/VALVES TIMING/SPEED GOVERNOR</b>
Tav./Table	<b>D 1-D 2-D 3</b>	<b>COMANDI CIRCUITO LUBRIFICAZIONE</b>	<b>CONTROLS LUBRICATING SYSTEM</b>
Tav./Table	<b>E 1-E 2-E 3</b>	<b>CIRCUITO COMBUSTIBILE</b>	<b>FUEL SYSTEM</b>
Tav./Table	<b>F 1-F 2</b>	<b>RAFFREDDAMENTO AVVIAMENTO</b>	<b>COOLING SYSTEM STARTING</b>

edizione/issue febbraio/february 2006

La Lombardini si riserva il diritto di modificare in qualunque momento i dati contenuti in questa pubblicazione  
Data reported in this issue can be modified at any time by Lombardini

Tav./Table A/1	<b>ASPIRAZIONE E SCARICO</b>	<b>INTAKE AND EXHAUST</b>
----------------	------------------------------	---------------------------

**A**  
15LD



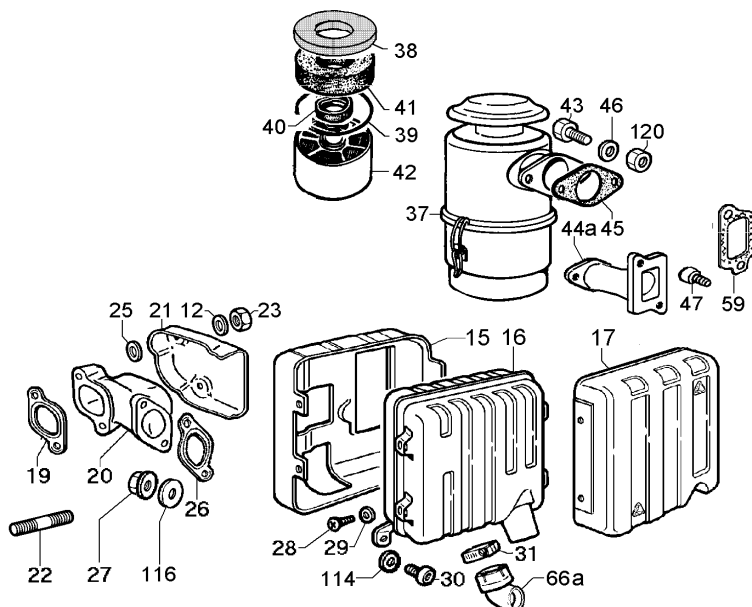
Versione <b>K</b> Version	2A6800	2A6810			Motore/Engine <b>15LD 400</b>
------------------------------	--------	--------	--	--	-------------------------------

Pos.	Matricola Part No.	15LD 400	15LD 400		Descrizione	Description
------	-----------------------	----------	----------	--	-------------	-------------

A 12	4480.003	2	2		guarnizione in fibra	fibre gasket
A 15	6927.318	1	1		protezione l.entrata gas	muffler guard (inlet side)
A 16	5460.464	1	1		MARMITTA COMPLETA Pos. 15-16-17-28-29	MUFFLER ASS.Y
A 17	6927.319	1	1		protezione l.uscita gas	muffler guard (outlet side)
A 19	4501.101	1	1		guarnizione	gasket
A 20	2486.400	1	1		collettore scarico	exhaust manifold
A 21	6927.595	1	1		protezz.collett.scar.	exh.manif.guard
A 22	6780.084	2	2		prigioniero M 8 X 40 (52)	stud M 8 X 40 (52)
A 23	3240.172	2	2		dado M 8	nut M 8
A 25	4480.003	2	2		guarnizione in fibra	fibre gasket
A 26	4501.101	1	1		guarnizione	gasket
A 27	3240.165	2	2		dado speciale M.8 ch.12	nut M 8
A 28	9790.037	4	4		vite M 6 X 8	screw M 6 X 8
A 29	7555.027	4	4		rondella diam. 6,4	washer diam. 6,4
A 30	9732.074	1	1		vite M 8 X 20	screw M 8 X 20
A 31	3630.194	---	1		fascetta d.20-32	clamp diam.20-32
A 37	3700.373	1	1		filtro aria diam.=122 con 3 masse filtr.	air cleaner diam. 122 with 3 filt.elements
A 38	5496.334	1	1		massa filtr.sup.feltro d.118	filt.element diam.118
A 39	1261.072	1	1		anello h=17,6 d=54	seal ring h=17,6 d=54
A 40	4775.120	1	1		guarnizione h=10 d=135	gasket h=10 d=135
A 41	5496.333	1	1		massa filtr.sup.spugna d.124	filt.element diam.124
A 42	5496.071	1	1		massa filt.inferiore h.90 d.120	filt.element h.90 diam.120
A 43	1770.006	2	2		bullone M 8 X 1,25 X 25	bolt M 8 X 1,25 X 25

# A

## 15LD



Versione **K**  
Version

2A6800

2A6810

Motore/Engine **15LD 400**

Pos. Matricola  
Part No.

15LD 400

15LD 400

Descrizione

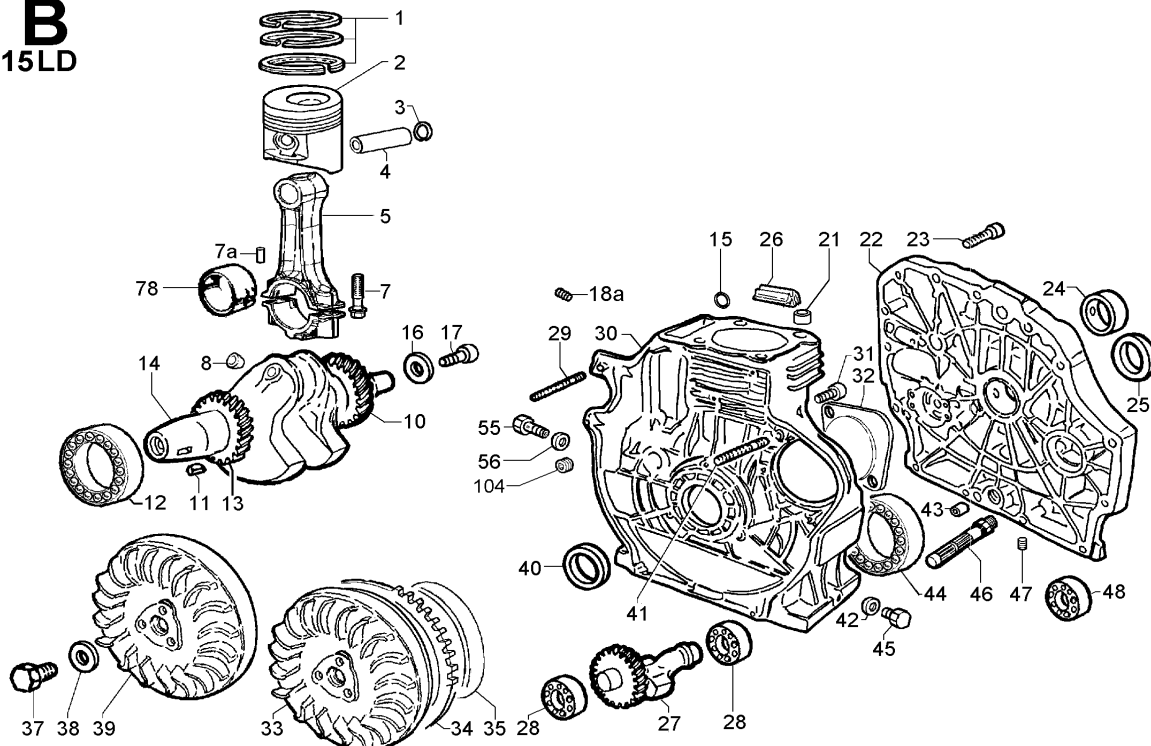
Description

A 44a 6902.194  
A 45 4500.067  
A 46 7565.007  
A 47 9732.074  
A 59 4490.093  
A 66a 9170.109  
A114 7500.020  
A116 7625.010  
A120 3240.018

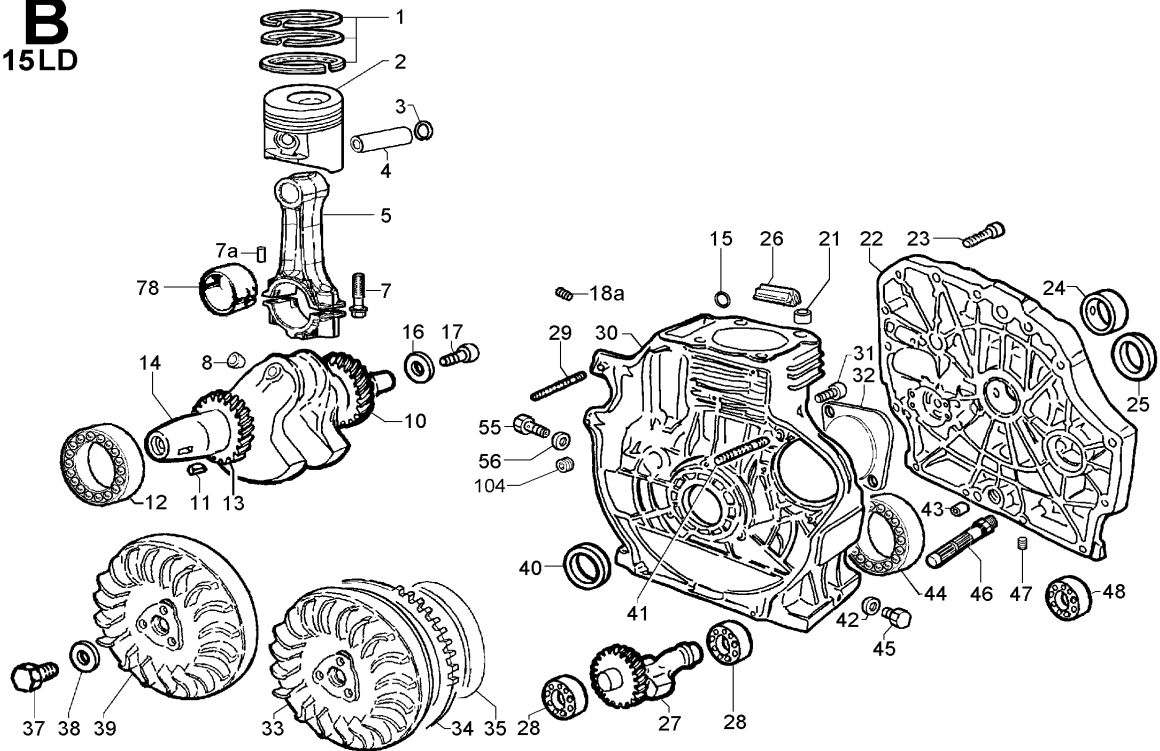
1 1  
1 1  
2 2  
2 2  
1 1  
--- 1  
1 1  
2 2  
2 2

prolunga  
guarnizione  
rondella diam. 8  
vite M 8 X 20  
guarn.filt.aria  
terminale scarico per raider  
rondella diam. 8,4  
rondella diam. 8  
dado M 8

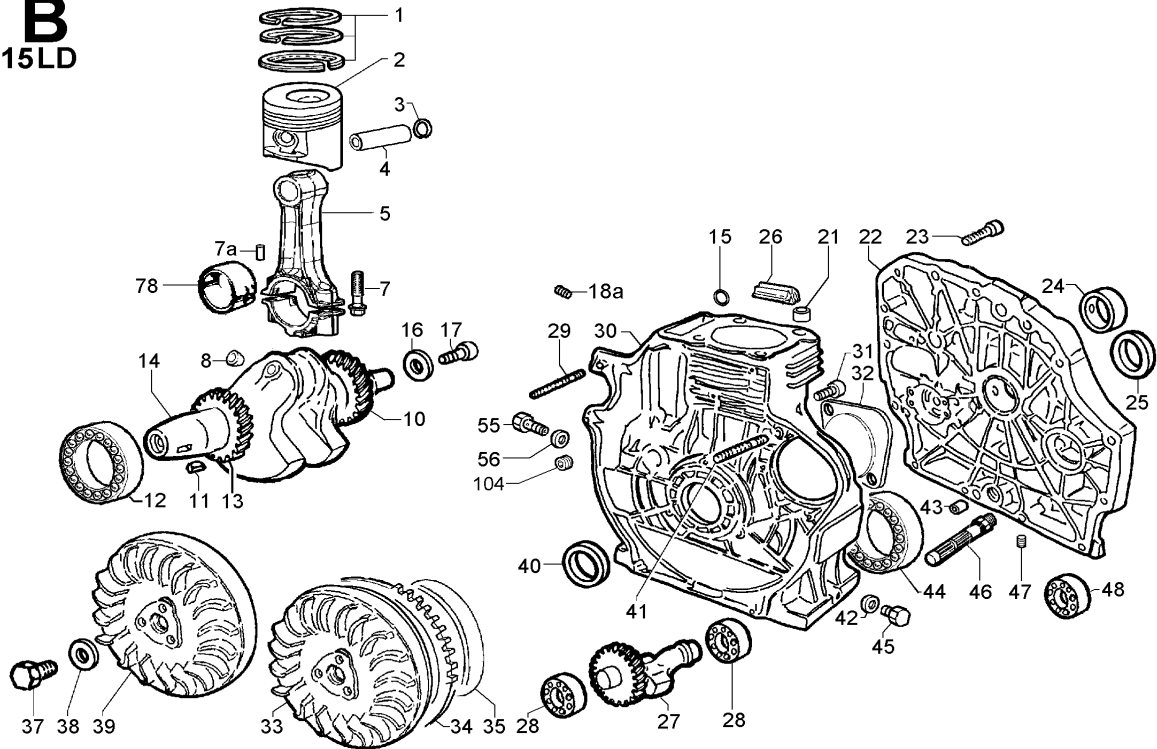
air filter extension  
gasket  
washer diam. 8  
screw M 8 X 20  
air cleaner gasket  
raider exhaust pipe  
washer diam. 8,4  
washer diam. 8  
nut M 8

**B  
15LD**

**Versione K  
Version**
**2A6800  
2A6810**
**Motore/Engine 15LD 400**

Pos.	Matricola Part No.	15LD 400	15LD 400	Descrizione	Description
B 1	8211.239	1	1	serie segmenti std.	ring set std.
B 1	8211.240	1	1	serie segmenti +0,50	ring set +0,50
B 1	8211.241	1	1	serie segmenti +1,00	ring set +1,00
B 2	6502.188	1	1	PISTONE COMPL. std.	PISTON SET std
B 2	6502.189	1	1	PISTONE COMPL. +0,50	PISTON SET +0,50
B 2	6502.190	1	1	PISTONE COMPL. +1,00 Pos. 1-2-3-4	PISTON SET +1,00
B 3	1160.065	2	2	anello	circlip
B 4	8480.103	1	1	spinotto	gudgeon pin
B 5	1526.264	1	1	BIELLA COMPLETA in acciaio Pos. 5-7-7a	CONNECT.ROD (steel)
B 7	1770.177	2	2	bullone per biella in acciaio M 8 X 1 X 42	connecting rod bolt
B 7a	7770.256	2	2	rullino 3 X 5	roller 3 X 5
B 8	9080.132	1	1	tappo d.6	plug diam. 6
B 10	«————»			vedi Pos. 9/14	see Pos. 9/14
B 11	2280.067	1	1	chiavetta 5 X 7,5 X 19	key 5 X 7,5 X 19
B 12	3002.081	1	1	cuscinetto 6308-C3	ball bearing 6308-C3
B 13	«————»			vedi Pos.14	see Pos.14
B 14	1051.230	1	1	ALBERO GOMITO CONICO std con ingranaggio per equilibratore Pos. 8-10-11-13-14	CONICAL PTO CRANKSHAFT with equalizer device

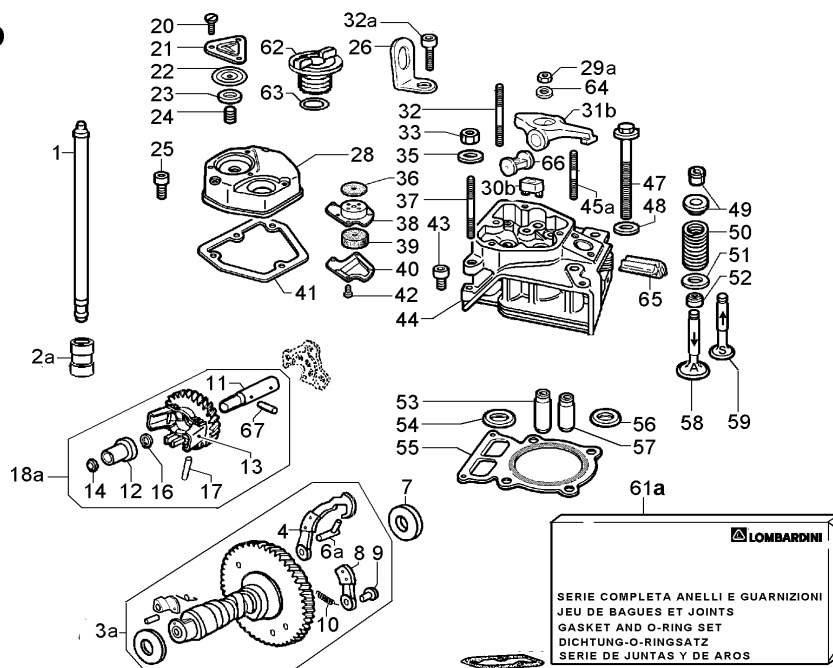
**B**  
**15LD**

**Versione K**  
**Version**
**2A6800**  
**2A6810**
**Motore/Engine 15LD 400**

Pos.	Matricola Part No.	15LD 400	15LD 400	Descrizione	Description
B 15	1200.035	1	1	anello OR 107	O ring 107
B 16	7625.060	1	1	rondella diam. 8,4	washer diam. 8,4
B 17	1770.039	1	1	bullone M 8 X 1,25 X 28	bolt M 8 X 1,25 X 28
B 18a	9080.270	2	2	tappo filettato M 8	threaded plug M 8
B 21	1970.140	2	2	bussola centraggio	sleeve
B 22	6645.712	1	1	PORTINA Pos. 22-24 std-47	CRANKCASE COVER
B 23	9730.031	15	15	vite M 8 X 40	screw M 8 X 40
B 24	1611.209	1	1	bronzina std.	bearing std.
B 24	1611.210	1	1	bronzina -0,25	bearing -0,25
B 24	1611.211	1	1	bronzina -0,50	bearing -0,50
B 24	1611.212	1	1	bronzina -1,00	bearing -1,00
B 25	1213.390	1	1	anello paraolio 30X50X7	seal ring 30X50X7
B 26	4775.588	1	1	guarnizione	gasket
B 27	1111.267	1	1	albero equil.compl.	equalizer shaft
B 28	3002.077	2	2	cuscinetto alb.controrot.	equalizer shaft ball bearing
B 29	6780.180	1	1	prigioniero M 8 X 67	stud M 8 X 67
B 30	1510.957	1	1	basamento (pred.per pm alim.e avv.eletr.)	crankcase (fitted for feed pump and el.st.)
B 33	9881.359	---	1	VOLANO con CORONA Pos. 33-34	FLYWHELL with CROWN
B 34	2816.204	---	1	corona avviamento Z=94	crown gear Z=94
B 35	«————»	---	1	vedi Pos. F 40	see Pos. F 40

**B**  
**15LD**

**Versione K**  
**Version**
**2A6800**  
**2A6810**
**Motore/Engine 15LD 400**

Pos.	Matricola Part No.	15LD 400	15LD 400	Descrizione	Description
B 37	1800.030	1	1	bullone M 14 X 35 sin.	bolt M 14 X 35 sin.
B 38	7626.043	1	1	rondella d.14,5	washer diam.14,5
B 39	9881.308	1	---	volano std.	flywheel std.
B 40	1213.396	1	1	anello paraolio 40X55X7	seal ring 40X55X7
B 41	6780.180	1	1	prigioniero M 8 X 67	stud M 8 X 67
B 42	4350.007	2	2	guarnizione	gasket
B 43	1970.338	2	2	boccola	bushing
B 44	«-----»			vedi Pos. 12	see Pos. 12
B 45	9040.012	2	2	tappo M 14	plug M 14
B 46	3740.109	1	1	filtro aspirazione olio	suction oil filter
B 47	9765.108	2	2	vite M 10 X 1,5	screw M 10 X 1,5
B 47	9765.162	2	2	vite M 10 X 1	screw M 10 X 1
B 48	«-----»			vedi Pos. 28	see Pos. 28
B 55	1901.169	1	1	bullone calib.press.olio M 10	oil pressure adjuster screw M 10
B 56	4670.059	1	1	guarnizione in rame d.10	copper gasket diam.10
B 78	1640.122	1	1	bronzina biella std.	big end bushing std.
B 78	1640.123	1	1	bronzina biella -0,25	big end bushing -0,25
B 78	1640.124	1	1	bronzina biella -0,50	big end bushing -0,50
B104	9765.111	1	1	tappo filettato conico M.8x1x8	threaded plug

**C**  
15LD



Versione **K**  
Version

2A6800	2A6810		
--------	--------	--	--

Motore/Engine **15LD 400**

Pos. Matricola  
Part No.

15LD 400	15LD 400		
----------	----------	--	--

Descrizione

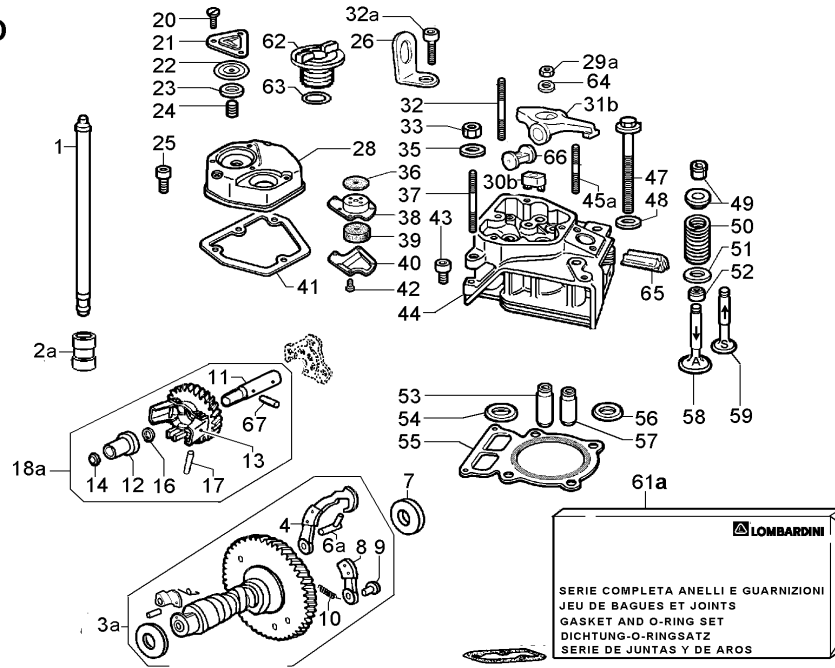
Description

C 1	1410.165	2	2	asta punteria	push rod
C 2a	7215.113	2	2	punteria idraulica	hydraulic push rod
C 3a	1011.659	1	1	ALBERO A CAMME con decompres.	CAMSHAFT ASS.Y with antirev. compr.rel.
C 4	«———»			vedi pos. 3a	see pos. 3a
C 6a	1015.077	1	1	alberino decompres.	compression shaft
C 7	1301.245	1	1	anello rasam d.14	thrust washer diam.14
C 8	«———»			vedi pos. 3a	see pos. 3a
C 9	6231.211	2	2	perno	pin
C 10	5660.103	1	---	molla	spring
C 10	5660.104	---	1	molla per motore con avv.elettrico	spring for engine with electric starting
C 11	«———»			vedi pos. D 86	see pos. D 86
C 12	7200.276	1	1	PUNTALINO COMPLETO Pos. 12-14	DRIVE ROD ASS.Y
C 13	«———»			vedi Pos. 18/18a	see Pos. 18/18a
C 14	«———»			vedi Pos. 12	see Pos. 12
C 16	1240.004	1	1	anello seeger d.10	circlip diam. 10
C 17	7770.171	2	2	rullino 3 X 27,8	roller 3 X 27,8
C 18a	4896.435	1	1	GRUPPO REGOLATORE Pos. 11-12-13-14-16-17-18a-67	GOVERNOR ASS.Y
C 20	9820.168	3	3	vite autofil. 3,9 X 9,5	self-tapping screw 3,9 X 9,5
C 21	«———»			vedi Pos. 28	see Pos. 28
C 22	«———»			vedi Pos. 28	see Pos. 28



Tav./Table C/2	<b>TESTA/CAPPELLO BIL./VALVOLE DISTRIBUZIONE/REGOLATORE GIRI SERIE GUARNIZIONI</b>	<b>CYLINDER HEAD/ROCKER ARM BOX VALVES/TIMING/SPEED GOVERNOR GASKET SET</b>
----------------	--	---

**C**  
**15LD**



Versione <b>K</b> Version	<b>2A6800</b>	<b>2A6810</b>			Motore/Engine <b>15LD 400</b>
------------------------------	---------------	---------------	--	--	-------------------------------

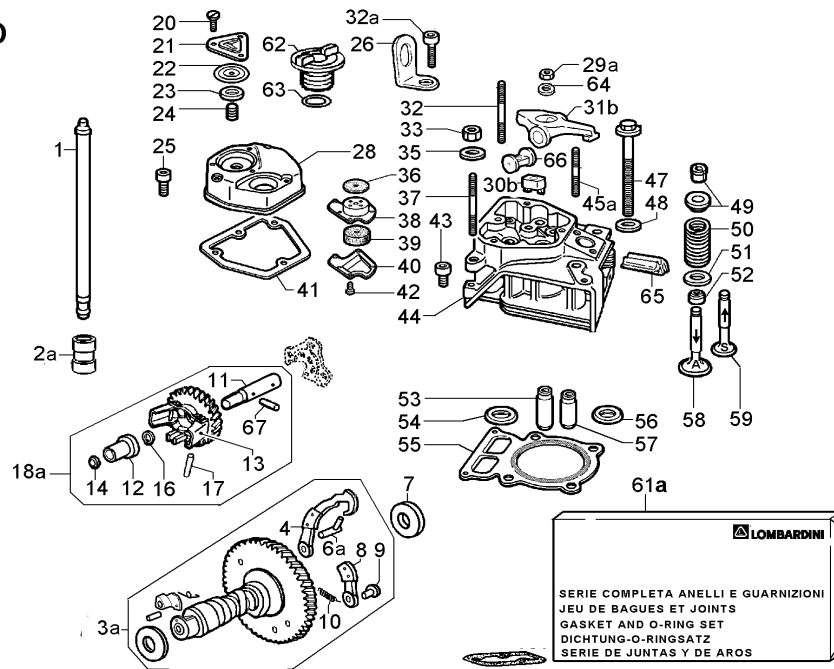
Pos.	Matricola Part No.	<b>15LD 400</b>	<b>15LD 400</b>		Descrizione	Description
------	-----------------------	-----------------	-----------------	--	-------------	-------------

C 23	«———»				vedi Pos. 28	see Pos. 28
C 24	«———»				vedi Pos. 28	see Pos. 28
C 25	9732.016	3	3		vite M 6 X 40	screw M 6 X 40
C 26	8506.003	1	1		squadretta	engine lifting eye
C 28	2125.650	1	1		CAPPELLO COMPL. Pos. 20-21-22-23-24-28-36-38-39-40-42	ROCK.ARM COVER ASS.Y
C 29a	3203.050	2	2		dado autoblocc. M 6	selflocking nut M 6
C 30b	3512.022	2	2		distanziale	spacer
C 31b	1541.258	2	2		bilanciere	rocker arm
C 32	6780.027	1	1		prigioniero M 8 X 50	stud M 8 X 50
C 32a	9730.024	2	2		vite M 8 X 16	screw M 8 X 16
C 33	3240.164	2	2		dado M 8 flangiato	nut M 8
C 35	7625.061	2	2		rondella diam. 8,4	washer diam. 8,4
C 36	«———»				vedi Pos. 28	see Pos. 28
C 37	6780.164	1	1		prigioniero M 8 X 55	stud M 8 X 55
C 38	«———»				vedi Pos. 28	see Pos. 28
C 39	«———»				vedi Pos. 28	see Pos. 28
C 40	«———»				vedi Pos. 28	see Pos. 28
C 41	4400.097	1	1		guarniz.cappel.	gasket
C 42	9820.181	5	5		vite M 3,5 X 6,5	screw M 3,5 X 6,5
C 43	9732.078	2	2		vite M 6 X 25	screw M 6 X 25
C 44	9200.719	1	1		TESTA con sedi e guide Pos. 44-53-54-56-57	CYLINDER HEAD with seats and guides



Tav./Table C/3	<b>TESTA/CAPPELLO BIL./VALVOLE DISTRIBUZIONE/REGOLATORE GIRI SERIE GUARNIZIONI</b>	<b>CYLINDER HEAD/ROCKER ARM BOX VALVES/TIMING/SPEED GOVERNOR GASKET SET</b>
----------------	--	---

**C**  
**15LD**



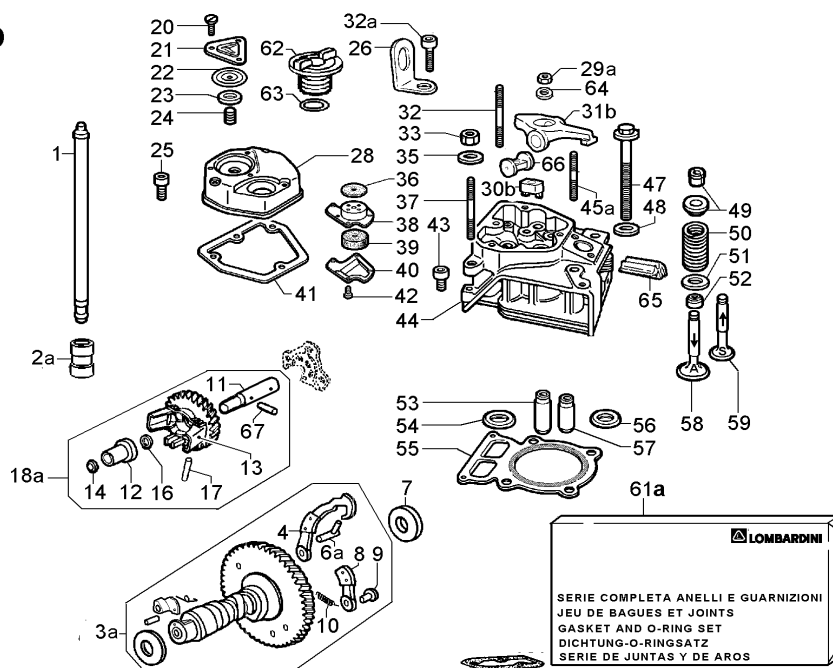
Versione <b>K</b> Version	<b>2A6800</b>	<b>2A6810</b>			Motore/Engine <b>15LD 400</b>
------------------------------	---------------	---------------	--	--	-------------------------------

Pos.	Matricola Part No.	<b>15LD 400</b>	<b>15LD 400</b>		Descrizione	Description
------	-----------------------	-----------------	-----------------	--	-------------	-------------

C 45a	6760.097	2	2		prigioniero M 6 X 30	stud M 6 X 30
C 47	1862.152	4	4		bullone fissaggio testa	fixing head bolt
C 48	7625.130	4	4		rondella diam. 10,2	washer diam. 10,2
C 49	6410.117	2	2		piattello con semiconi	retainer with half-collets
C 50	5755.155	2	2		molla valvola	valve spring
C 51	3430.114	2	2		dischetto	cup
C 52	4535.015	2	2		guarnizione stelo valv.asp.	valve retainer
C 53	4845.218	1	1		guida valv.asp.	inlet valve guide
C 54	8000.219	1	1		sede v.aspirazione	inlet v.seat
C 55	4730.751	1	1		guarnizione testa 1,0 d.82,5 - senza tacche di riferimento spessore	head gask. 1,0 diam. 82,5 - no semicircular cut
C 55	4730.752	1	1		guarnizione testa 1,1 d.82,5 - 1 tacca di riferimento spessore	head gask. 1,1 diam. 82,5 - 1 semicircular cut
C 55	4730.753	1	1		guarnizione testa 1,2 d.82,5 - 2 tacche di riferimento spessore	head gask. 1,2 diam. 82,5 - 2 semicircular cuts
C 55	4730.759	1	1		guarnizione testa 1,0 d.83,5 - senza tacche di rif.spessore + 1 mm sul diam.interno per rettifica	head gask. 1,0 diam. 83,5 - no semicircular cut + 1 mm on the internal diam. to be used for
C 55	4730.760	1	1		camicia cilindro 1a e 2a maggiorazione guarnizione testa 1,1 d.83,5 - 1 tacca di rif.spessore + 1 mm sul diam.interno per rettifica camicia cilindro 1a e 2a maggiorazione	1st and 2nd oversized cyl. liner head gask. 1,1 diam. 83,5 - 1 semicircular cut + 1 mm on the internal diam. to be used for 1st and 2nd oversized cyl. liner
					segue/continues Pos. C 55	

Tav./Table C/4	<b>TESTA/CAPPELLO BIL./VALVOLE</b> <b>DISTRIBUZIONE/REGOLATORE GIRI</b> <b>SERIE GUARNIZIONI</b>	<b>CYLINDER HEAD/ROCKER ARM BOX</b> <b>VALVES/TIMING/SPEED GOVERNOR</b> <b>GASKET SET</b>
----------------	--	---

**C**  
**15LD**



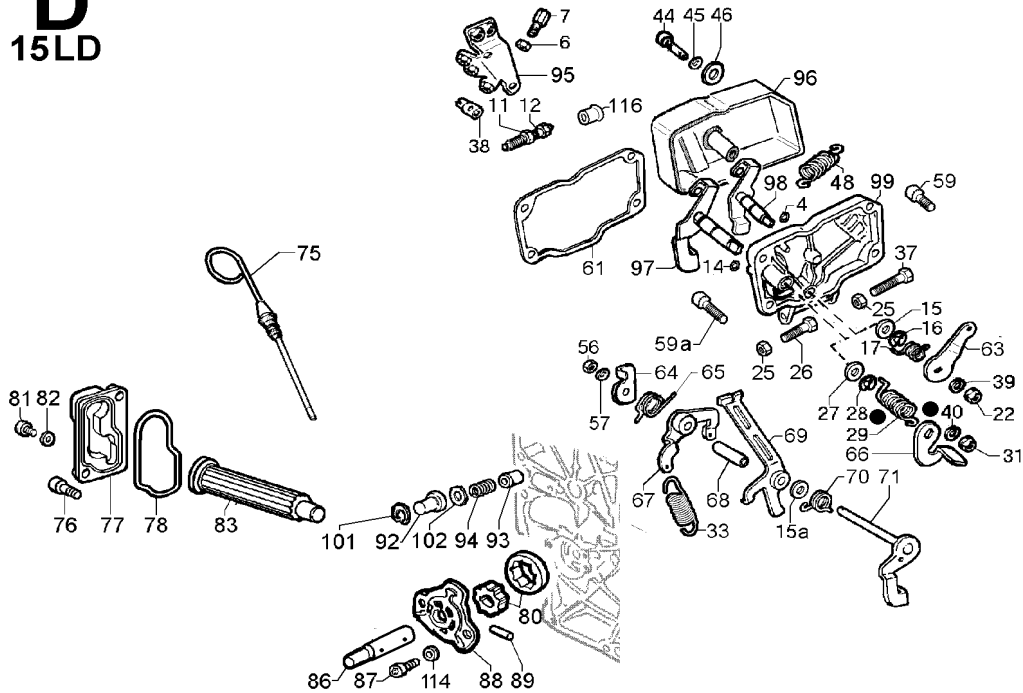
Versione <b>K</b> Version	<table border="1"> <tr> <td style="background-color: yellow;">2A6800</td> <td style="background-color: lightgreen;">2A6810</td> <td style="background-color: lightblue;"></td> <td style="background-color: lightblue;"></td> </tr> </table>	2A6800	2A6810			Motore/Engine <b>15LD 400</b>
2A6800	2A6810					

Pos.	Matricola Part No.	<table border="1"> <tr> <td style="background-color: yellow;">15LD 400</td> <td style="background-color: lightgreen;">15LD 400</td> <td style="background-color: lightblue;"></td> <td style="background-color: lightblue;"></td> </tr> </table>	15LD 400	15LD 400			Descrizione	Description
15LD 400	15LD 400							

C 55	4730.761	<table border="1"> <tr> <td style="background-color: yellow;">1</td> <td style="background-color: lightgreen;">1</td> <td style="background-color: lightblue;"></td> <td style="background-color: lightblue;"></td> </tr> </table>	1	1			guarnizione testa 1,2 d.83,5 - 2 tacche di rif.spessore + 1 mm sul diam.interno per rettifica camicia cilindro 1a e 2a maggiorazione	head gask. 1,2 diam. 83,5 - 2 semicircular cuts + 1 mm on the internal diam. to be used for 1st and 2nd oversized cyl. liner
1	1							
C 56	8000.218	<table border="1"> <tr> <td style="background-color: yellow;">1</td> <td style="background-color: lightgreen;">1</td> <td style="background-color: lightblue;"></td> <td style="background-color: lightblue;"></td> </tr> </table>	1	1			sede v.aspirazione	inlet v.seat
1	1							
C 57	4845.219	<table border="1"> <tr> <td style="background-color: yellow;">1</td> <td style="background-color: lightgreen;">1</td> <td style="background-color: lightblue;"></td> <td style="background-color: lightblue;"></td> </tr> </table>	1	1			guida valv.scar.	exh.valve guide
1	1							
C 58	9652.163	<table border="1"> <tr> <td style="background-color: yellow;">1</td> <td style="background-color: lightgreen;">1</td> <td style="background-color: lightblue;"></td> <td style="background-color: lightblue;"></td> </tr> </table>	1	1			valvola aspirazione	intake valve
1	1							
C 59	9685.155	<table border="1"> <tr> <td style="background-color: yellow;">1</td> <td style="background-color: lightgreen;">1</td> <td style="background-color: lightblue;"></td> <td style="background-color: lightblue;"></td> </tr> </table>	1	1			valvola di scarico	exhaust valve
1	1							
C 61a	8205.125	<table border="1"> <tr> <td style="background-color: yellow;">1</td> <td style="background-color: lightgreen;">1</td> <td style="background-color: lightblue;"></td> <td style="background-color: lightblue;"></td> </tr> </table>	1	1			SERIE COMPLETA ANELLI E GUARNIZIONI - (esclusa Pos. C 55) Pos. A18-A19-A26-B15-C41-C52-D61-D78-E22-E25-E101	RING AND GASKET COMPLETE SET (without Pos. C 55)
1	1							
C 62	9032.086	<table border="1"> <tr> <td style="background-color: yellow;">1</td> <td style="background-color: lightgreen;">1</td> <td style="background-color: lightblue;"></td> <td style="background-color: lightblue;"></td> </tr> </table>	1	1			tappo rif.olio	filler oil cap
1	1							
C 63	1200.082	<table border="1"> <tr> <td style="background-color: yellow;">1</td> <td style="background-color: lightgreen;">1</td> <td style="background-color: lightblue;"></td> <td style="background-color: lightblue;"></td> </tr> </table>	1	1			anello OR 3106	O ring 3106
1	1							
C 64	7620.017	<table border="1"> <tr> <td style="background-color: yellow;">2</td> <td style="background-color: lightgreen;">2</td> <td style="background-color: lightblue;"></td> <td style="background-color: lightblue;"></td> </tr> </table>	2	2			rondella	washer
2	2							
C 65	4775.588	<table border="1"> <tr> <td style="background-color: yellow;">1</td> <td style="background-color: lightgreen;">1</td> <td style="background-color: lightblue;"></td> <td style="background-color: lightblue;"></td> </tr> </table>	1	1			guarnizione	gasket
1	1							
C 66	6045.150	<table border="1"> <tr> <td style="background-color: yellow;">2</td> <td style="background-color: lightgreen;">2</td> <td style="background-color: lightblue;"></td> <td style="background-color: lightblue;"></td> </tr> </table>	2	2			perno bilancieri	journal
2	2							
C 67	7770.172	<table border="1"> <tr> <td style="background-color: yellow;">1</td> <td style="background-color: lightgreen;">1</td> <td style="background-color: lightblue;"></td> <td style="background-color: lightblue;"></td> </tr> </table>	1	1			rullino 3 X 15,8	roller 3 X 15,8
1	1							

Tav./Table D/1	COMANDI/CIRCUITO LUBRIFICAZIONE	CONTROLS/LUBRICATING SYSTEM
----------------	---------------------------------	-----------------------------

**D**  
**15LD**



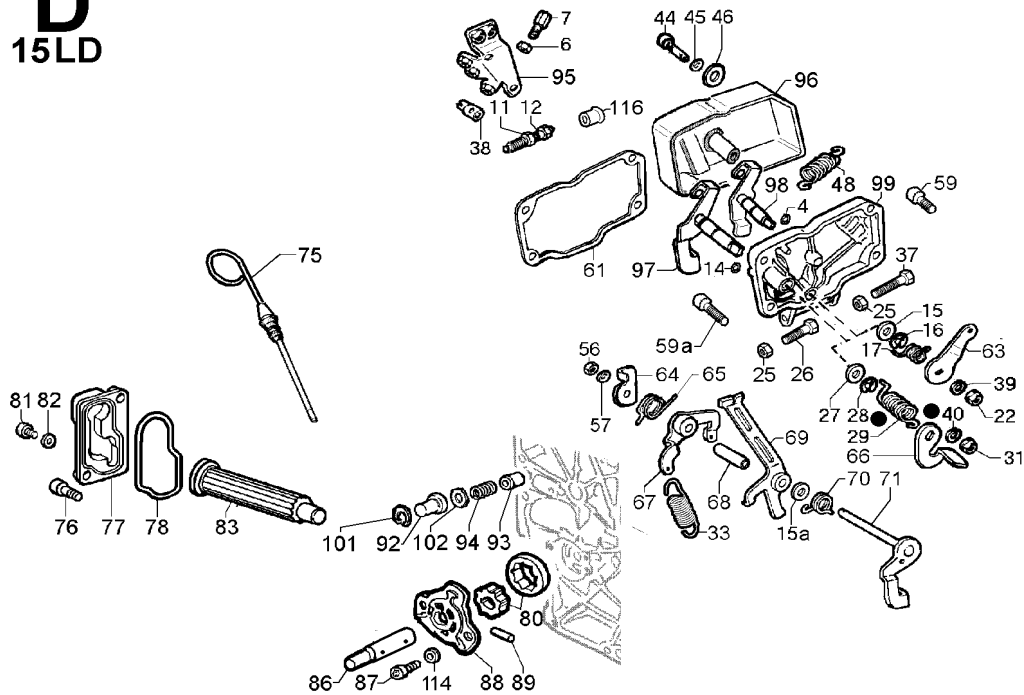
Versione <b>K</b> Version	2A6800	2A6810			Motore/Engine <b>15LD 400</b>
------------------------------	--------	--------	--	--	-------------------------------

Pos.	Matricola Part No.	15LD 400	15LD 400	Descrizione	Description
------	-----------------------	----------	----------	-------------	-------------

D 4	1200.041	1	1	anello OR 103/2018	O ring 103/2018
D 6	3240.009	2	2	dado M 6	nut M 6
D 7	9180.191	2	2	registro M 6	adjuster M 6
D 11	3240.063	1	1	dado M 10	nut M 10
D 12	8576.124	1	1	supplemento 3600 Giri/min	extra fuel device 3600 R.P.M.
D 14	1200.041	1	1	anello OR 103/2018	O ring 103/2018
D 15	7625.105	1	1	rondella diam. 8,2	washer diam. 8,2
D 15a	7625.105	1	1	rondella diam. 8,2	washer diam. 8,2
D 16	1240.002	1	1	anello seeger d.8	circlip diam. 8
D 17	«———»			vedi Pos. 99	see Pos. 99
D 22	3240.008	1	1	dado M 6	nut M 6
D 25	3240.008	2	2	dado M 6	nut M 6
D 26	1760.027	1	1	bullone M 6 X 1 X 40 (max.)	bolt M 6 X 40 (maximum)
D 27	7625.105	1	1	rondella diam. 8,2	washer diam. 8,2
D 28	1240.002	1	1	anello seeger d.8	circlip diam. 8
D 29	«———»			vedi Pos. 99	see Pos. 99
D 31	3240.008	1	1	dado M 6	nut M 6
D 33	5655.355	1	1	molla reg. 3600 R.P.M.	gover.spring 3600 R.P.M.
D 37	1760.027	1	1	bullone M 6 X 1 X 40 (minimo)	bolt M 6 X 40 (minimum)
D 38	5830.119	2	2	morsetto	nut
D 39	7565.004	1	1	rondella diam. 6	washer diam. 6
D 40	7565.004	1	1	rondella diam. 6	washer diam. 6
D 44	9790.030	1	1	vite M 6 X 30	screw M 6 X 30
D 45	7565.004	1	1	rondella diam. 6	washer diam. 6
D 46	7625.007	1	1	rondella diam. 6	washer diam. 6
D 48	5655.230	1	1	molla ritorno leva stop	stop lever recovery spring

Tav./Table D/2	COMANDI/CIRCUITO LUBRIFICAZIONE	CONTROLS/LUBRICATING SYSTEM
----------------	---------------------------------	-----------------------------

**D**  
**15LD**



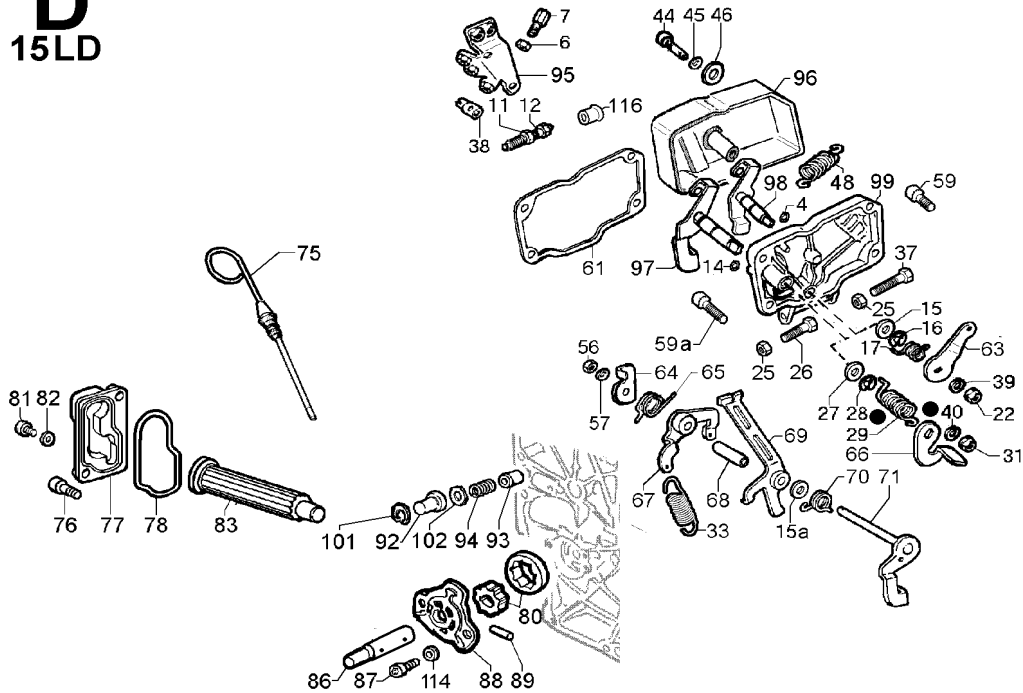
Versione <b>K</b> Version	2A6800	2A6810			Motore/Engine <b>15LD 400</b>
------------------------------	--------	--------	--	--	-------------------------------

Pos.	Matricola Part No.	15LD 400	15LD 400	Descrizione	Description
------	-----------------------	----------	----------	-------------	-------------

D 56	3240.008	1	1	dado M 6	nut M 6
D 57	7565.004	1	1	rondella diam. 6	washer diam. 6
D 59	9730.337	4	4	vite M 6 X 16	screw M 6 X 16
D 59a	9730.012	2	2	vite M 6 X 20	screw M 6 X 20
D 61	4431.198	1	1	guarnizione coperchio	gasket
D 63	«————»			vedi Pos. 99	see Pos. 99
D 64	5200.979	1	1	leva regolatore	governor lever
D 65	5801.582	1	1	molla supplemento	extra fuel spring
D 66	«————»			vedi Pos. 99	see Pos. 99
D 67	5200.977	1	1	leva regolatore	governor lever
D 68	1585.215	1	1	bussola	sleeve
D 69	5201.132	1	1	leva comando portata	control lever
D 70	5600.042	1	1	molla	spring
D 71	5201.133	1	1	leva regolatore interna	internal control lever
D 75	076R.082	1	1	asta livello olio std	oil dipstick std
D 76	9730.013	2	2	vite M 6 X 25	screw M 6 X 25
D 77	9220.117	1	1	testina cartuccia olio per pressostato M 12	oil filt.cover for pressure oil switch M 12
D 78	1200.384	1	1	anello OR sagomato	O ring
D 80	6605.090	1	1	pompa olio	oil pump
D 81	8965.051	1	---	tappo M 12	plug M 12
D 82	4670.060	1	---	guarnizione in rame d.12	copper gasket diam.12
D 83	2175.155	1	1	cartuccia olio	oil filter cartridge
D 86	1111.225	1	1	albero pompa olio	oil pump shaft
D 87	9730.010	2	2	vite M 6 X 16	screw M 6 X 16
D 88	8836.210	1	1	supporto pompa olio	oil pump support
D 89	7770.172	1	1	rullino 3 X 15,8	roller 3 X 15,8

Tav./Table D/3	COMANDI/CIRCUITO LUBRIFICAZIONE	CONTROLS/LUBRICATING SYSTEM
----------------	---------------------------------	-----------------------------

**D**  
**15LD**



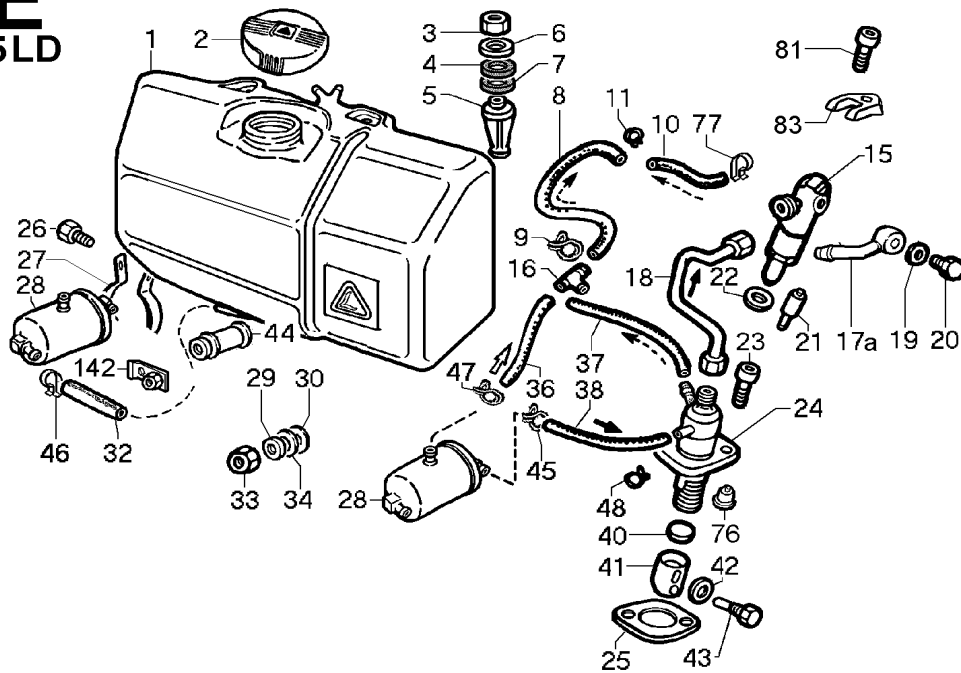
Versione <b>K</b> Version	2A6800	2A6810			Motore/Engine <b>15LD 400</b>
------------------------------	--------	--------	--	--	-------------------------------

Pos.	Matricola Part No.	15LD 400	15LD 400	Descrizione	Description
------	-----------------------	----------	----------	-------------	-------------

D 92	7980.077	1	1	tappo valvola pressione	pressure valve plug
D 93	6495.074	1	1	pistoncino	drive rod
D 94	5625.023	1	1	molla valvola press.	pressure valve spring
D 95	8510.152	1	1	squadretta	bracket
D 96	6927.502	1	1	protezione per comando monoleva	guard for remote control ass.y monolever
D 97	«———»			vedi Pos. 99	see Pos. 99
D 98	«———»			vedi Pos. 99	see Pos. 99
D 99	2750.409	1	1	COPERCHIO ACCEL. E STOP COMPL. A DISTANZA Pos. 4-13-14-15-16-17-22-25-26-27-28-29-31-37-39-40-63-66-97-98-99	REMOTE ACCEL.- STOP GOVERNOR COVER ASS.Y
D101	1240.017	1	1	anello seeger	snap ring
D102	7625.105	1	1	rondella diam. 8,2	washer diam. 8,2
D114	7555.004	2	2	rondella diam. 6	washer diam. 6
D116	2145.037	1	1	cappuccio	cap

Tav./Table E/1	<b>CIRCUITO COMBUSTIBILE</b>	<b>FUEL SYSTEM</b>
----------------	------------------------------	--------------------

**E**  
**15LD**



Versione <b>K</b> Version	2A6800	2A6810			Motore/Engine <b>15LD 400</b>
------------------------------	--------	--------	--	--	-------------------------------

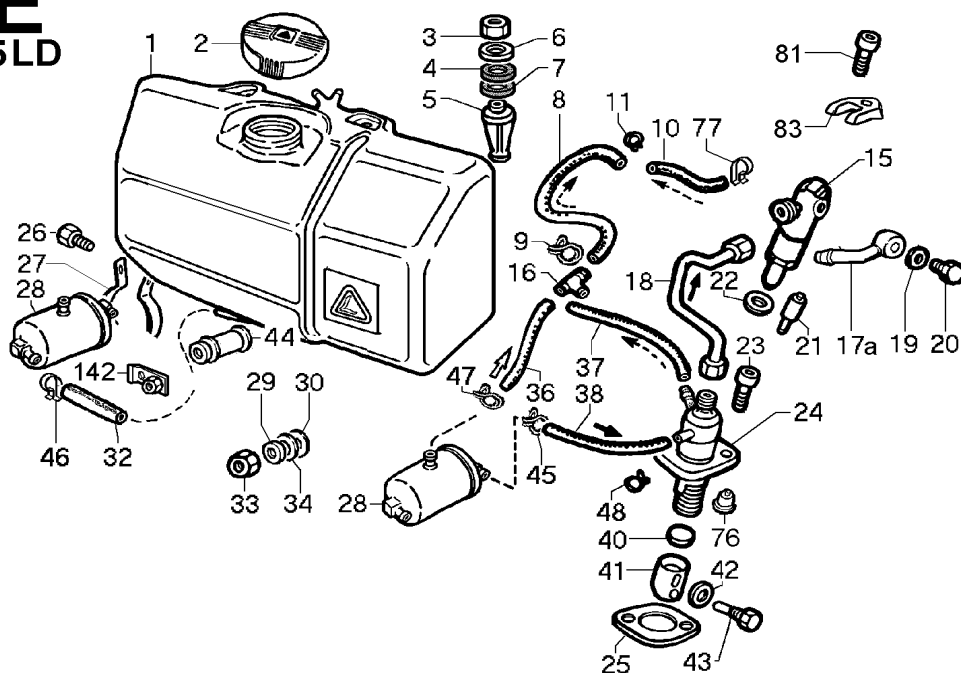
Pos.	Matricola Part No.	15LD 400	15LD 400	Descrizione	Description
------	-----------------------	----------	----------	-------------	-------------

E 1	8103.317	1	1	serbatoio	fuel tank
E 2	9043.096	1	1	tappo serb. std.	fuel tank cap std.
E 3	3240.164	2	2	dado M 8 flangiato	nut M 8
E 4	7701.154	2	2	rondella gomma	rubber washer
E 5	3527.509	2	2	distanziale	spacer
E 6	7670.118	2	2	rondella	washer
E 7	7701.154	2	2	rondella gomma	rubber washer
E 8	9375.872	1	1	tubo comb. 5x10 mm. 250	fuel pipe 5x10 mm. 250
E 9	375R.094	2	2	fascetta	clamp
E 10	9375.872	1	1	tubo comb. 5x10 mm. 250	fuel pipe 5x10 mm. 250
E 11	375R.094	2	2	fascetta clic d. 9-11	clamp Oteco clic 55
E 15	5010.054	1	1	iniettore 15LD 400	injector 15LD 400
E 16	2527.094	1	1	connettore rosso	hose connector (red)
E 17a	7270.239	1	1	raccordo d. 6	banjo union diam. 6
E 18	9376.029	1	1	tubo alta pressione	high press.pipe
E 19	4670.062	2	2	guarnizione in rame d.6,2 X 10 X 1,5	copper gasket diam. 6,2 X 10 X 1,5
E 20	7260.053	1	1	raccordo versione EPA	connection EPA version
E 21	6531.562	1	1	polverizzatore 15LD 400	nozzle 15LD 400
E 22	4670.099	1	1	guarnizione in rame 1,00	copper gasket 1,00
E 23	9730.301	2	2	vite M 6 X 20	screw M 6 X 20
E 24	6590.359	1	1	pompa iniezione	injection pump
E 25	4580.180	1	1	guarn.pomp.inez. 0,38	gasket 0,38
E 26	9730.319	1	1	vite M 6 X 12	screw M 6 X 12
E 27	3617.197	1	1	fascetta fiss.filtro comb.	fuel filter clamp
E 28	3730.096	1	1	filtro combustibile	fuel filter
E 29	7670.118	2	2	rondella	washer



Tav./Table E/2	<b>CIRCUITO COMBUSTIBILE</b>	<b>FUEL SYSTEM</b>
----------------	------------------------------	--------------------

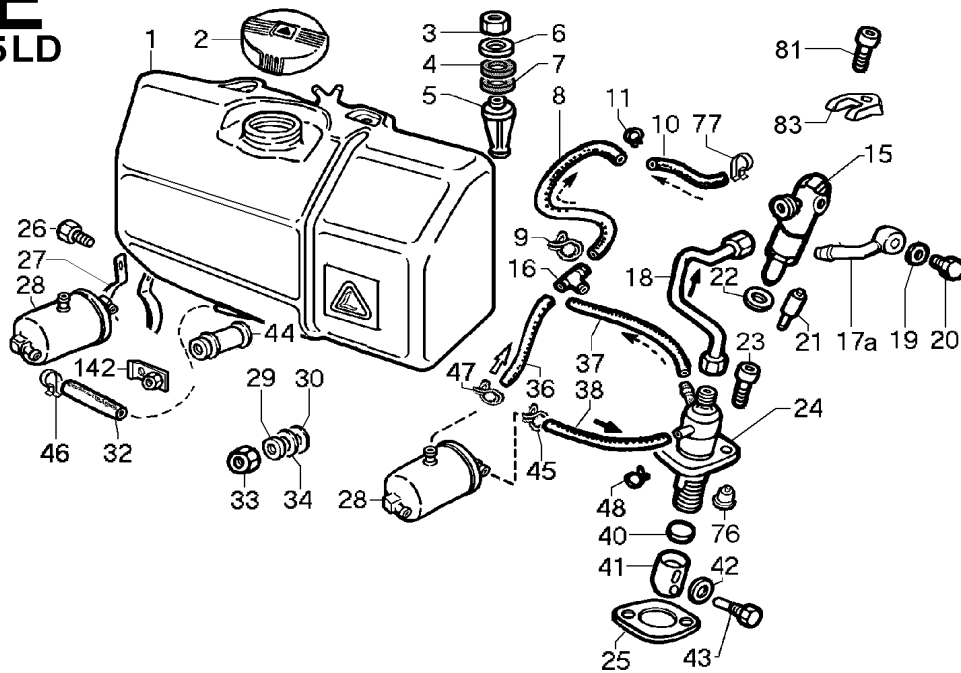
**E**  
**15LD**



Versione <b>K</b> Version	<b>2A6800</b>	<b>2A6810</b>			Motore/Engine <b>15LD 400</b>
------------------------------	---------------	---------------	--	--	-------------------------------

Pos.	Matricola Part No.	<b>15LD 400</b>	<b>15LD 400</b>	Descrizione	Description
------	-----------------------	-----------------	-----------------	-------------	-------------

E 30	7701.154	2	2	rondella gomma	rubber washer
E 32	9375.872	1	1	tubo comb. 5x10 mm. 250	fuel pipe 5x10 mm. 250
E 33	3240.164	2	2	dado M 8 flangiato	nut M 8
E 34	7701.154	2	2	rondella gomma	rubber washer
E 36	9375.872	1	1	tubo comb. 5x10 mm. 250	fuel pipe 5x10 mm. 250
E 37	9375.872	1	1	tubo comb. 5x10 mm. 250	fuel pipe 5x10 mm. 250
E 38	9375.872	1	1	tubo comb. 5x10 mm. 250	fuel pipe 5x10 mm. 250
E 40	6000.113	1	1	registro (lilla) 4,00	adjustment cup violet 4,00
E 40	6000.114	1	1	registro (bianco) 4,10	adjustment cup white 4,10
E 40	6000.115	1	1	registro (giallo) 4,20	adjustment cup yellow 4,20
E 40	6000.116	1	1	registro (arancio) 4,30	adjustment cup orange 4,30
E 40	6000.117	1	1	registro (azzurro) 4,40	adjustment cup light blue 4,40
E 40	6000.118	1	1	registro (verde) 4,50	adjustment cup green 4,50
E 40	6000.119	1	1	registro (blu) 4,60	adjustment cup blue 4,60
E 40	6000.120	1	1	registro (rosso) 4,70	adjustment cup red 4,70
E 40	6000.121	1	1	registro (grigio) 4,80	adjustment cup grey 4,80
E 40	6000.122	1	1	registro (lilla) 4,90	adjustment cup violet 4,90
E 40	6000.129	1	1	registro (grigio chiaro) 5,00	adjustment cup light grey 5,00
E 40	6000.130	1	1	registro (marrone) 5,10	adjustment cup brown 5,10
E 41	7215.133	1	1	punteria (EPA)	push rod (EPA)
E 42	7625.303	1	1	rondella diam. 6,5	washer diam. 6,5
E 43	9765.182	1	1	vite guida punteria	screw M 6 X 1
E 44	3527.419	2	2	distanziale	spacer
E 45	375R.094	1	1	fascetta clic d. 9-11	clamp diam.10,5
E 46	3630.159	1	1	fascetta d.10-12,5	clamp diam.10-12,5
E 47	3630.159	1	1	fascetta d.10-12,5	clamp diam.10-12,5

**E**  
**15LD**Versione **K**  
Version

2A6800

2A6810

Motore/Engine **15LD 400**

Pos.

Matricola  
Part No.

15LD 400

15LD 400

Descrizione

Description

E 48 3630.113  
E 76 9672.154  
E 77 3630.050  
E 81 9732.078  
E 83 8545.793  
E142 8510.165

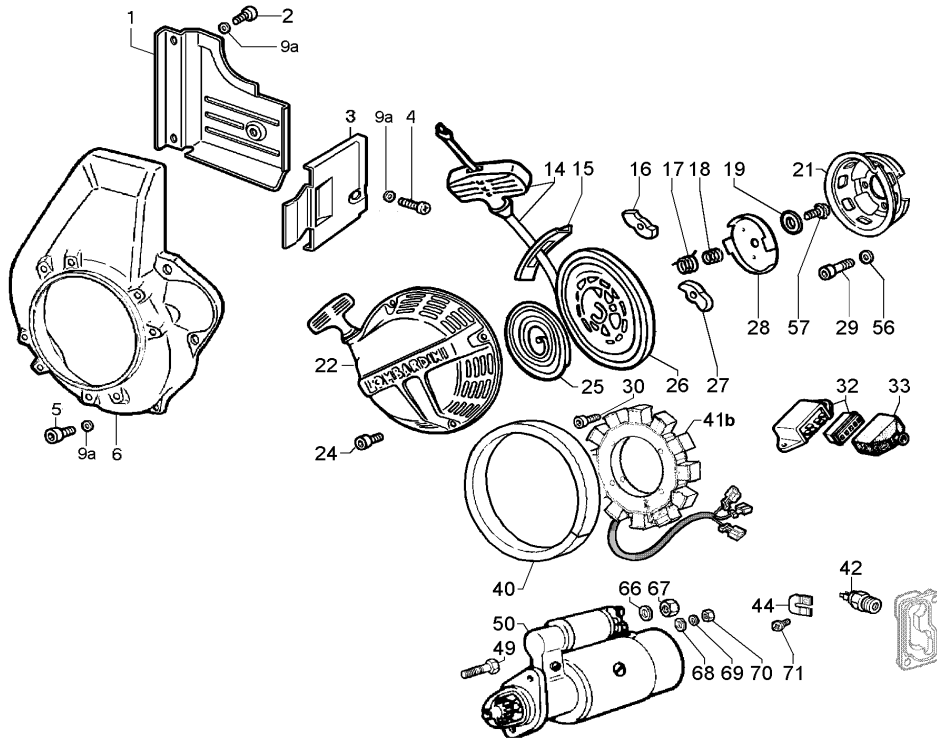
1 1  
1 1  
2 2  
1 1  
1 1  
1 1

fascetta  
valvola di mandata  
fascetta clic d. 9-11  
vite M 6 X 25  
staffa iniettore  
squadretta

clamp  
delivery valve  
clamp diam.10,5  
screw M 6 X 25  
bracket  
engine lifting eye

Tav./Table F/1	<b>RAFFREDDAMENTO/AVVIAMENTO</b>	<b>COOLING SYSTEM/STARTING</b>
----------------	----------------------------------	--------------------------------

**F**  
**15LD**



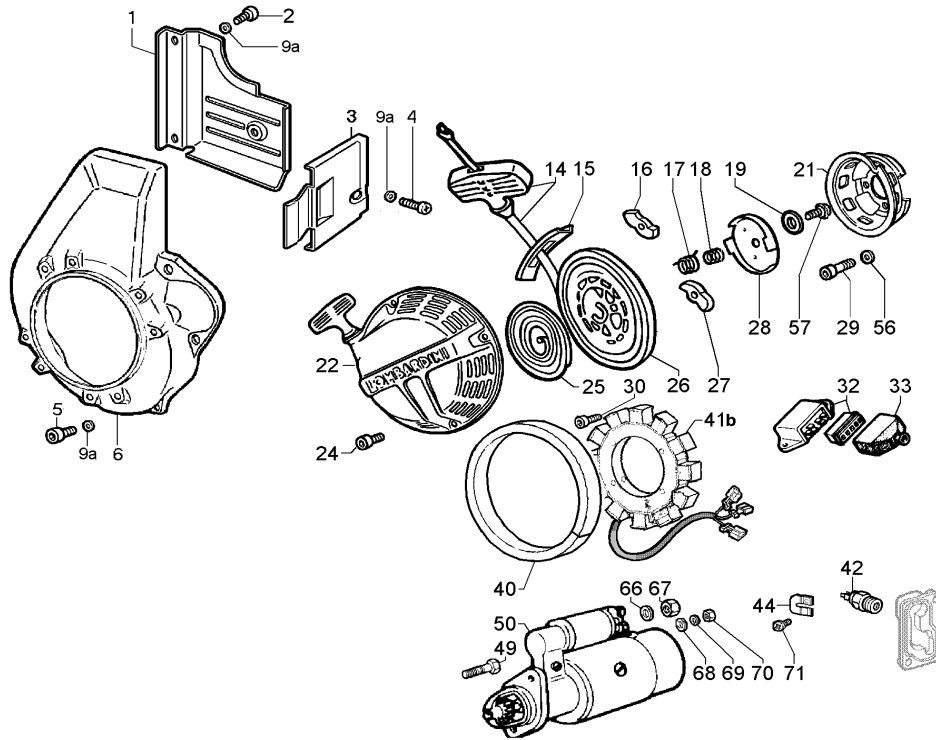
Versione <b>K</b> Version	<b>2A6800</b>	<b>2A6810</b>			Motore/Engine <b>15LD 400</b>
------------------------------	---------------	---------------	--	--	-------------------------------

Pos.	Matricola Part No.	<b>15LD 400</b>	<b>15LD 400</b>		Descrizione	Description
------	-----------------------	-----------------	-----------------	--	-------------	-------------

F 1	5066.313	1	1		lamiera conv.post.	rear panel
F 2	9790.037	2	2		vite M 6 X 8	screw M 6 X 8
F 3	5066.334	1	1		lamiera conv.lat.	side panel
F 4	9865.122	1	1		vite M 6 X 12	screw M 6 X 12
F 5	9732.084	4	4		vite M 6 X 12	screw M 6 X 12
F 6	2569.682	1	1		convogliatore rosso	shroud (red)
F 9a	7555.004	3	3		rondella diam. 6	washer diam. 6
F 14	4904.038	1	1		impugnatura completa	handle ass.y
F 15	«——»				vedi Pos. 22	see Pos. 22
F 16	5025.097	1	1		dente innesto	tooth
F 17	5660.066	1	1		molla di richiamo	recovery spring
F 18	5590.026	1	1		molla frizione	thrust spring
F 19	«——»				vedi Pos. 22	see Pos. 22
F 21	6961.108	1	1		puleggia	pulley
F 22	1472.035	1	1		AVVIATORE AUTOAVV. Pos. 14-15-16-17-18-19-22-25-26-27-28-57	REWIND STARTING
F 24	9730.309	4	4		vite M 6 X 8	screw M 6 X 8
F 25	5801.539	1	1		molla a spirale	spiral spring
F 26	7100.377	1	1		puleggia autoavv.	recoil pulley
F 27	5025.097	1	1		dente innesto	tooth
F 28	7980.063	1	1		scodellino	cup
F 29	9732.063	3	3		vite M 8 X 35	screw M 8 X 35
F 30	992R.046	---	3		vite M 6 X 22	screw M 6 X 22
F 32	7362.228	---	1		regolatore tens. 12V 14/21A-6 contatti	voltage regulator. 12V 14/21A-6 contacts

Tav./Table F/2	<b>RAFFREDDAMENTO/AVVIAMENTO</b>	<b>COOLING SYSTEM/STARTING</b>
----------------	----------------------------------	--------------------------------

**F**  
15LD



Versione <b>K</b> Version	2A6800	2A6810			Motore/Engine <b>15LD 400</b>
------------------------------	--------	--------	--	--	-------------------------------

Pos.	Matricola Part No.	15LD 400	15LD 400	Descrizione	Description
------	-----------------------	----------	----------	-------------	-------------

F 33	2145.014	---	1	cappuccio regolatore	regulator cap
F 40	2002.019	---	1	rotore plastoferrite 12 V 12/20 A	plastoferrite rotor 12 V 12/20 A
F 41b	8565.106	---	1	statore alt. 12V - 3 fili	alternator stator 12 V 12 A - 3 wires
F 42	6745.042	---	1	pressostato 0,6 bar (M 12) rosso	pressure oil switch 0,6 bar (M 12) - red
F 44	6275.187	---	1	piastrina	safety plate
F 49	992R.024	---	1	vite M 10 X 25	screw M 10 X 25
F 50	5840.218	---	1	motorino avv. 12 V	starting motor 12 V
F 56	7565.007	3	3	rondella diam. 8	washer diam. 8
F 57	9730.340	1	1	vite M 5 X 10	screw M 5 X 10
F 66	7565.007	---	1	rondella diam. 8	washer diam. 8
F 67	3240.018	---	1	dado M 8	nut M 8
F 68	7625.008	---	1	rondella diam. 6,4	washer diam. 6,4
F 69	7555.004	---	1	rondella diam. 6	washer diam. 6
F 70	3240.009	---	1	dado M 6	nut M 6
F 71	9790.037	1	1	vite M 6 X 8	screw M 6 X 8