

Motore/Engine 11LD 626-3

| | | |
|-------------------------|-----------------|------|
| cilindrata/displacement | cm ³ | 1870 |
| cilindri/cylinders | | 3 |
| alesaggio/bore | mm | 95 |
| corsa/stroke | mm | 88 |


**PARTICOLARI NON FORNITI
DA LOMBARDINI**

quadro elettrico
 filtro aria
 marmitta scarico
 protezione marmitta
 campana portafrizione
 protezione cinghiette
 serbatoio combustibile

**PARTS NOT SUPPLIED
BY LOMBARDINI**

electrical panel
 air cleaner
 exhaust muffler
 muffler guard
 clutch bell
 belt guard
 feul tank

INDICE DELLE TAVOLE
SPARE PARTS TABLE INDEX

| | | | |
|------------|--------------------------------|---|--|
| Tav./Table | A | ASPIRAZIONE E SCARICO | INTAKE AND EXHAUST |
| Tav./Table | B 1-B 2-B 3-B 4 | BIELLA/PISTONE/CILINDRO ALBERO GOMITO/VOLANO BASAMENTO/FLANGIATURA | CONN.ROD/PISTON/CYLINDER CRANKSHAFT/FLYWHEEL CRANKCASE/FLANGING |
| Tav./Table | C 1-C 2-C 3-C 4 C 5 | TESTA/CAPPELLO BIL. VALVOLE/DISTRIBUZIONE REGOLATORE GIRI | CYLINDER HEAD ROCKER ARM BOX/VALVES TIMING/SPEED GOVERNOR |
| Tav./Table | D 1-D 2-D 3-D 4 D 5 | COMANDI CIRCUITO LUBRIFICAZIONE | CONTROLS LUBRICATING SYSTEM |
| Tav./Table | E 1-E 2-E 3 | CIRCUITO COMBUSTIBILE | FUEL SYSTEM |
| Tav./Table | F 1-F 2-F 3 | RAFFREDDAMENTO AVVIAMENTO PARTI ELETTRICHE | COOLING SYSTEM STARTING ELECTRICAL EQUIPMENT |
| Tav./Table | Z | BLOCCO MOTORE | SHORT BLOCK |

**SIGLA MOTORE E IDENTIFICAZIONE
MODEL NUMBER AND IDENTIFICATION**

**clicca qui
click here**

**ORDINE RICAMBI
PARTS ORDER**

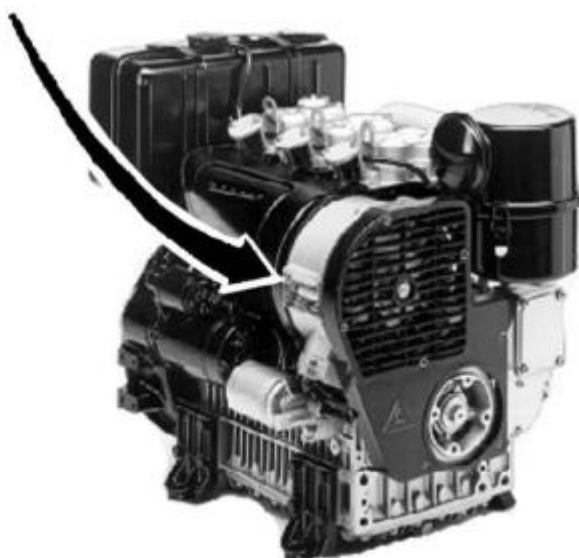
**clicca qui
click here**

edizione/issue maggio/may 2004

La Lombardini si riserva il diritto di modificare in qualunque momento i dati contenuti in questa pubblicazione

Data reported in this issue can be modified at any time by Lombardini

SIGLA MOTORE E IDENTIFICAZIONE MODEL NUMBER AND IDENTIFICATION



ORDINE RICAMBI PARTS ORDER

Per ordini ricambi verificare
For any spare part order please check following details

TIPO E MATRICOLA DEL MOTORE - Versione (K) sulla targhetta del motore
ENGINE TYPE AND SERIAL NUMBER - K version on the engine name plate



MATRICOLA DEL RICAMBIO - Sulla Tavola Ricambi - leggere eventuali note
SPARE PART NUMBER - On the spare part table - please read any additional info

Tav./Table B/1

| BIELLA/PISTONE/CILINDRO ALBERO GOMITO/VOLANO/ BASAMENTO/FLANGIATURA | CONN.ROD/PISTON/CYLINDER CRANKSHAFT/FLYWHEEL CRANKCASE/FLANGING |
|---|---|
|---|---|

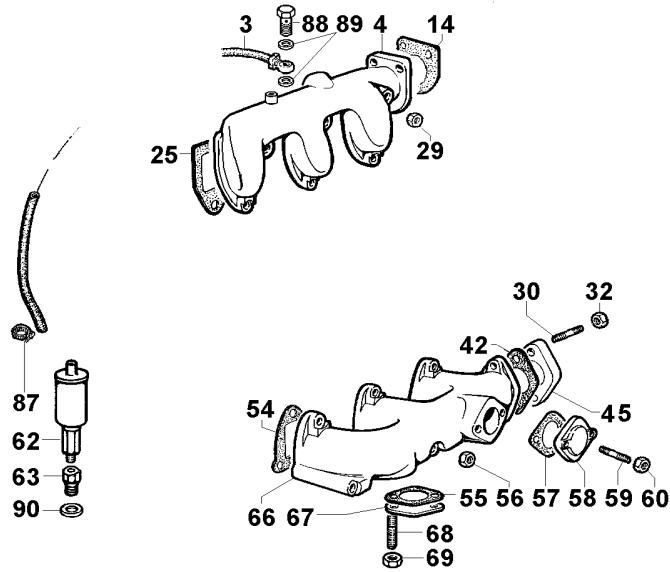
| Versione Version | Motore/Engine 11LD 626-3 | | | | |
|---------------------|--------------------------|--------------|--|-----------------------------|------------------------------------|
| Pos. | Matricola Code | Q.tà Q.ty | Descrizione | Description | Modifiche Improvement |
| B 1 | 8211.209 | 3 | serie segmenti std. | ring set std. | |
| B 1 | 8211.210 | 3 | serie segmenti +0,50 | ring set +0,50 | |
| B 1 | 8211.211 | 3 | serie segmenti +1,00 | ring set +1,00 | |
| B 2 | 8501.753 | 3 | PISTONE COMPL. std EPA-97/68 Pos. 1-2-5-6 | PISTON SET std EPA-97/68 CE | |
| B 3 | 1526.111 | 3 | BIELLA COMPLETA Pos. 3-4-7 | CONNECTING ROD | |
| B 4 | 1770.109 | 6 | bullone per biella M 8 X 50 | conn.rod bolt M 8 X 50 | |
| B 5 | 8480.029 | 3 | spinotto | gudgeon pin | |
| B 6 | 1240.022 | 6 | anello seeger | snap ring | |
| B 7 | 1630.014 | 3 | bronzina piede biella | small end bearing | |
| B 8 | 1640.059 | 3 | bronzina biella std. | big end bushing std. | |
| B 8 | 1640.060 | 3 | bronzina biella -0,25 | big end bushing -0,25 | |
| B 8 | 1640.061 | 3 | bronzina biella -0,50 | big end bushing -0,50 | |
| B 9 | 1050.946 | 1 | ALBERO GOMITO Pos. 9-11-12 | CRANKSHAFT | |
| B 10 | 2380.546 | 3 | cilindro | cylinder | |
| B 11 | 2290.056 | 2 | chiavetta | crankshaft woodruff key | |
| B 12 | 9080.133 | 3 | tappo d.8 | cap diam. 8 | |
| B 13 | 8676.080 | 1 | SUPPORTO CENTR. LATO VOL. Pos. 13-14 | FLYWHEEL SIDE MID.SUPPORT | segue in B/2 continues into B/2 |

pagina precedente/back page pagina successiva/next page

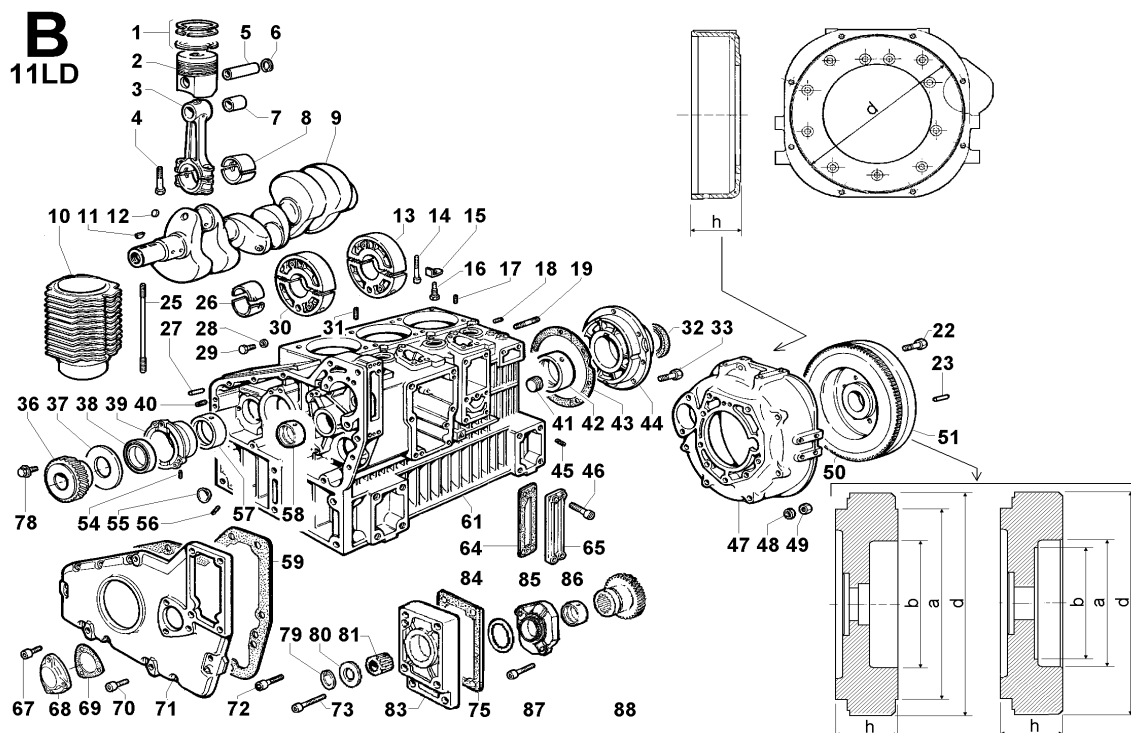
[ritorna all'indice/return to index](#) [esci/exit](#)

A

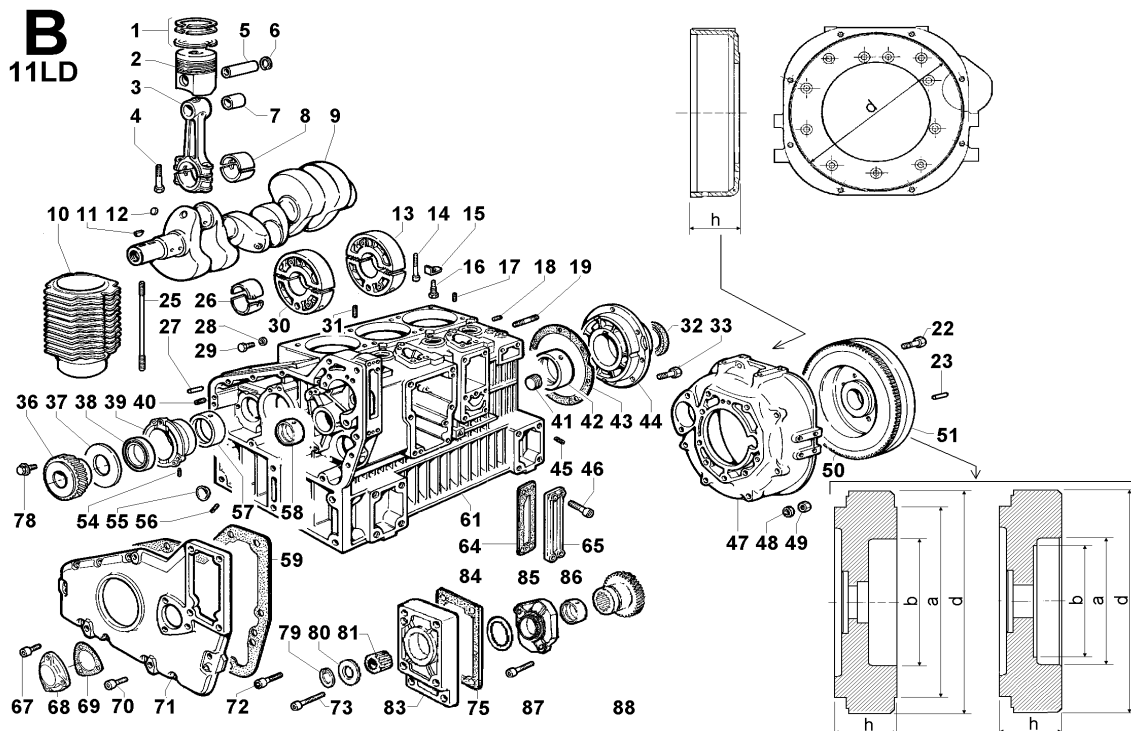
11LD



| Versione Version | | K 2A50C1 | K 2A55C1 | Motore/Engine 11LD 626-3 | | |
|---------------------|-------------------|--------------|---------------------------|---------------------------------|-----------------------|--------------------------|
| Pos. | Matricola Code | Q.tà Q.ty | Descrizione | | Description | Modifiche Improvement |
| A 3 | 9400.074 | 1 1 | tubo mm 330 | | tube mm 330 | |
| A 4 | 2486.075 | 1 1 | collettore aspirazione | | inlet manifold | |
| A 14 | 4490.086 | 1 1 | guarnizione | | gasket | |
| A 25 | 4420.020 | 3 3 | guarnizione aspiraz. | | inlet manifold gasket | |
| A 29 | 3240.164 | 6 6 | dado M 8 flangiato | | nut M 8 | |
| A 30 | 6780.068 | 2 2 | prigioniero M 8 X 18 (30) | | stud M 8 X 18 (30) | |
| A 32 | 3240.163 | 2 2 | dado M 8 | | nut M 8 | |
| A 42 | 4500.079 | 1 1 | guarnizione scarico | | exhaust gasket | |
| A 45 | 3815.013 | 1 1 | flangia scarico h=7,5 | | exh.flange h=7,5 | |
| A 54 | 4420.019 | 3 3 | guarnizione scarico | | exhaust manif.gasket | |
| A 55 | 4500.079 | 1 1 | guarnizione scarico | | exhaust gasket | |
| A 56 | 3240.163 | 6 6 | dado M 8 | | nut M 8 | |
| A 57 | 4500.079 | 1 1 | guarnizione scarico | | exhaust gasket | |
| A 58 | 6300.018 | 1 1 | piastra chiusura | | plate | |
| A 59 | 6780.008 | 2 2 | prigioniero M 8 X 20 (32) | | stud M 8 X 20 (32) | |
| A 60 | 3240.163 | 2 2 | dado M 8 | | nut M 8 | |
| A 62 | 4889.015 | 1 1 | separatore | | breather cap | |
| A 63 | 7301.053 | 1 1 | raccordo | | connection | |
| A 66 | 2486.046 | 1 1 | collettore scarico | | exhaust manifold | |
| A 67 | 6300.018 | 1 1 | piastra chiusura | | plate | |
| A 68 | 6780.008 | 2 2 | prigioniero M 8 X 20 (32) | | stud M 8 X 20 (32) | |
| A 69 | 3240.163 | 2 2 | dado M 8 | | nut M 8 | |
| A 87 | 3630.043 | 1 1 | fascetta 14-24 | | clamp 14-24 | |
| A 88 | 1901.039 | 1 1 | bullone raccordo M 14 | | union bolt | |
| A 89 | 4670.061 | 2 2 | guarnizione in rame d.14 | | copper gasket diam.14 | |
| A 90 | 4670.019 | 1 1 | guarniz.rame d.16 | | copper gasket diam.16 | |

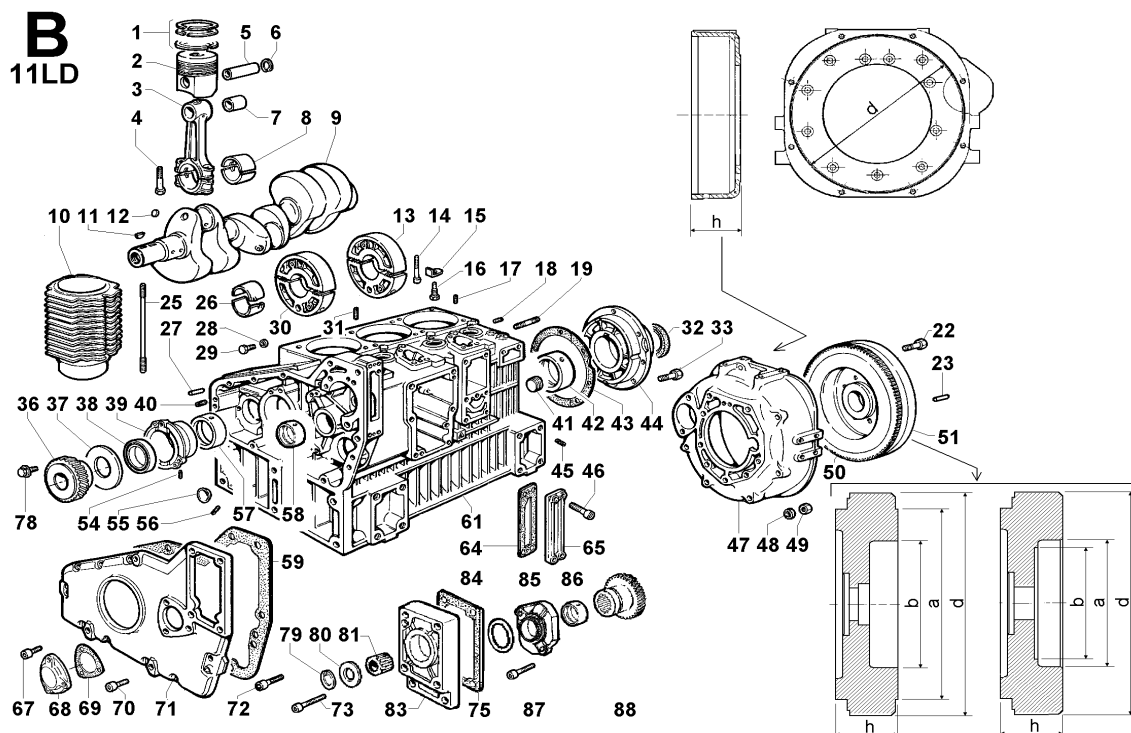


| Pos. | Matricola Code | Q.tà Q.ty | Descrizione | Description | Modifiche Improvement |
|---------------------|----------------|----------------------|--|-----------------------------|------------------------------------|
| Versione Version | | K 2A50C1 K 2A55C1 | Motore/Engine 11LD 626-3 | | |
| B 1 | 8211.209 | 3 3 | serie segmenti std. | ring set std. | |
| B 1 | 8211.210 | 3 3 | serie segmenti +0,50 | ring set +0,50 | |
| B 1 | 8211.211 | 3 3 | serie segmenti +1,00 | ring set +1,00 | |
| B 2 | 6501.753 | 3 3 | PISTONE COMPL. std EPA-97/68 Pos. 1-2-5-6 | PISTON SET std EPA-97/68 CE | |
| B 3 | 1526.111 | 3 3 | BIELLA COMPLETA Pos. 3-4-7 | CONNECTING ROD | |
| B 4 | 1770.109 | 6 6 | bullone per biella M 8 X 50 | conn.rod bolt M 8 X 50 | |
| B 5 | 8480.029 | 3 3 | spinotto | gudgeon pin | |
| B 6 | 1240.022 | 6 6 | anello seeger | snap ring | |
| B 7 | 1630.014 | 3 3 | bronzina piede biella | small end bearing | |
| B 8 | 1640.059 | 3 3 | bronzina biella std. | big end bushing std. | |
| B 8 | 1640.060 | 3 3 | bronzina biella -0,25 | big end bushing -0,25 | |
| B 8 | 1640.061 | 3 3 | bronzina biella -0,50 | big end bushing -0,50 | |
| B 9 | 1050.946 | 1 1 | ALBERO GOMITO Pos. 9-11-12 | CRANKSHAFT | |
| B 10 | 2380.546 | 3 3 | cilindro | cylinder | |
| B 11 | 2280.056 | 2 2 | chiavetta | crankshaft woodruff key | |
| B 12 | 9080.133 | 3 3 | tappo d.8 | cap diam. 8 | |
| B 13 | 8676.080 | 1 1 | SUPPORTO CENTR. LATO VOL. Pos. 13-14 | FLYWHELL SIDE MID.SUPPORT | segue in B/2 continues into B/2 |



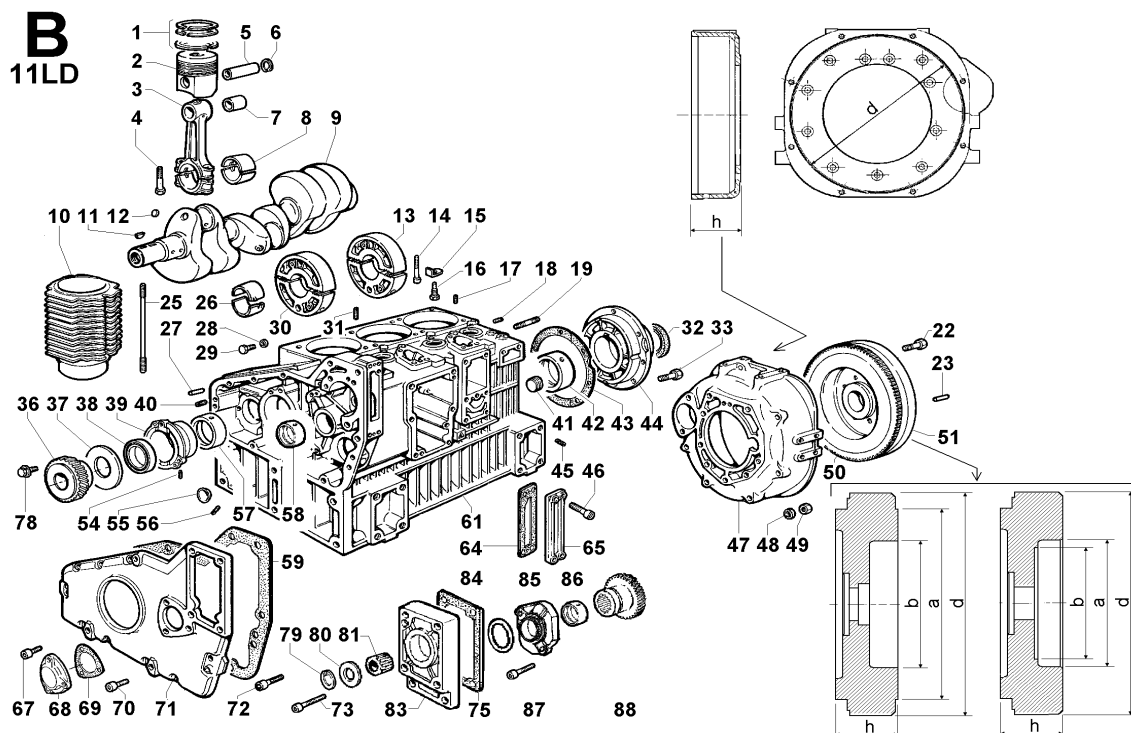
| Pos. | Matricola Code | Q.tà Q.ty | Descrizione | Description | Modifiche Improvement |
|---------------------|----------------|----------------------|--|---------------------------|--------------------------|
| Versione Version | | K 2A50C1 K 2A55C1 | Motore/Engine 11LD 626-3 | | |
| B 14 | 9730.034 | 4 4 | vite M 8 X 55 | screw M 8 X 55 | |
| B 15 | 5111.069 | 2 2 | piastrina | safety plate | |
| B 16 | 1862.144 | 2 2 | bullone | bolt | |
| B 17 | 9080.182 | 2 2 | tappo d.10 | plug diam.10 | |
| B 18 | 9765.109 | 1 1 | vite M 14 | screw M 14 | |
| B 19 | 6800.004 | 11 11 | prigioniero M 10 X 20 (35) | stud M 10 X 20 (35) | |
| B 22 | 1862.073 | 6 6 | bullone | bolt | |
| B 23 | 8430.054 | 2 2 | spina 7 X 16 | lockpin 7 X 16 | |
| B 25 | 6850.103 | 12 12 | prigioniero testa | cyl.head stud | |
| B 26 | 1611.082 | 2 2 | bronzina supp.cent. std. | middle supp.bearing std. | |
| B 26 | 1611.083 | 2 2 | bronzina supp.cent. -0,25 | middle supp.bearing -0,25 | |
| B 26 | 1611.084 | 2 2 | bronzina supp.cent. -0,50 | middle supp.bearing -0,50 | |
| B 27 | 8460.055 | 2 2 | spina | locating dowel | |
| B 28 | 4670.062 | 1 1 | guarnizione in rame d.6 | copper gasket diam. 6 | |
| B 29 | 1760.001 | 1 1 | bullone M 6 X 1 X 10 | bolt M 6 X 1 X 10 | |
| B 30 | 8676.081 | 1 1 | SUPPORTO CENTR. LATO DISTR Pos. 14-30 | GEAR SIDE MIDDLE SUPPORT | |
| B 31 | 9080.182 | 1 1 | tappo d.10 | plug diam.10 | |
| B 32 | 1213.349 | 1 1 | anello paraolio | seal ring | |
| B 33 | 1770.156 | 7 7 | bullone M 8 X 1,25 X 25 | bolt M 8 X 1,25 X 25 | |
| B 36 | 4936.049 | 1 1 | ingranaggio | gear | |
| B 37 | 1301.140 | 1 1 | anello | ring | |
| B 38 | 1213.351 | 1 1 | anello | ring | |

segue in B/3
continues into B/3



| | | | |
|---------------------|----------------------|--|---------------------------------|
| Versione Version | K 2A50C1 K 2A55C1 | | Motore/Engine 11LD 626-3 |
|---------------------|----------------------|--|---------------------------------|

| Pos. | Matricola Code | Q.tà Q.ty | Descrizione | Description | Modifiche Improvement |
|------|-------------------|--------------|---|-------------------------------|------------------------------------|
| B 39 | 8676.077 | 1 1 | SUPPORTO ALB.GOMITO std. | CRANKSH.SUPP. std. | |
| B 39 | 8675.108 | 1 1 | SUPPORTO ALB.GOMITO -0,25 | CRANKSH.SUPP. -0,25 | |
| B 39 | 8675.109 | 1 1 | SUPPORTO ALB.GOMITO -0,50 Pos. 39-57 | CRANKSH.SUPP. -0,50 | |
| B 40 | 9765.109 | 1 1 | vite M 14 | screw M 14 | |
| B 41 | 8965.036 | 1 1 | tappo | plug | |
| B 42 | 1611.089 | 1 1 | bronzina l.vol. std. | bearing std. (flyheel side) | |
| B 42 | 1611.090 | 1 1 | bronzina l.vol. -0,25 | bearing -0,25 (flywheel side) | |
| B 42 | 1611.091 | 1 1 | bronzina l.vol. -0,50 | bearing -0,50 (flywheel side) | |
| B 43 | 4701.056 | 1 1 | guarnizione | gasket | |
| B 44 | 8675.293 | 1 1 | supporto alb.gom.posteriore con bronzina montata | bearing housing (rear) | |
| B 45 | 9765.114 | 1 1 | vite M 6 X 16 | screw M 6 X 16 | |
| B 46 | 9732.092 | 4 4 | vite M 8 X 18 | screw M 8 X 18 | |
| B 47 | 2032.085 | 1 1 | campana SAE 5 | bell SAE 5 | |
| B 48 | 7565.011 | 11 11 | rondella diam. 10 | washer diam.10 | |
| B 49 | 3240.033 | 11 11 | dado M 10 | nut M 10 | |
| B 50 | 2816.045 | 1 1 | corona avviamento | crown gear | |
| B 51 | 9880.172 | 1 1 | VOLANO con CORONA Pos. 50-51 | FLYWHEEL ASS.Y | |
| B 54 | 9765.056 | 1 1 | vite M 5 X 5 | screw M 5 X 5 | |
| B 55 | 8990.022 | 1 1 | tappo diam. 30 | plug diam. 30 | |
| B 56 | 8990.052 | 5 5 | tappo d.8 | plug diam. 8 | |
| B 57 | «———» | | vedi Pos. B 39 | see Pos. B 39 | segue in B/4 continues into B/4 |

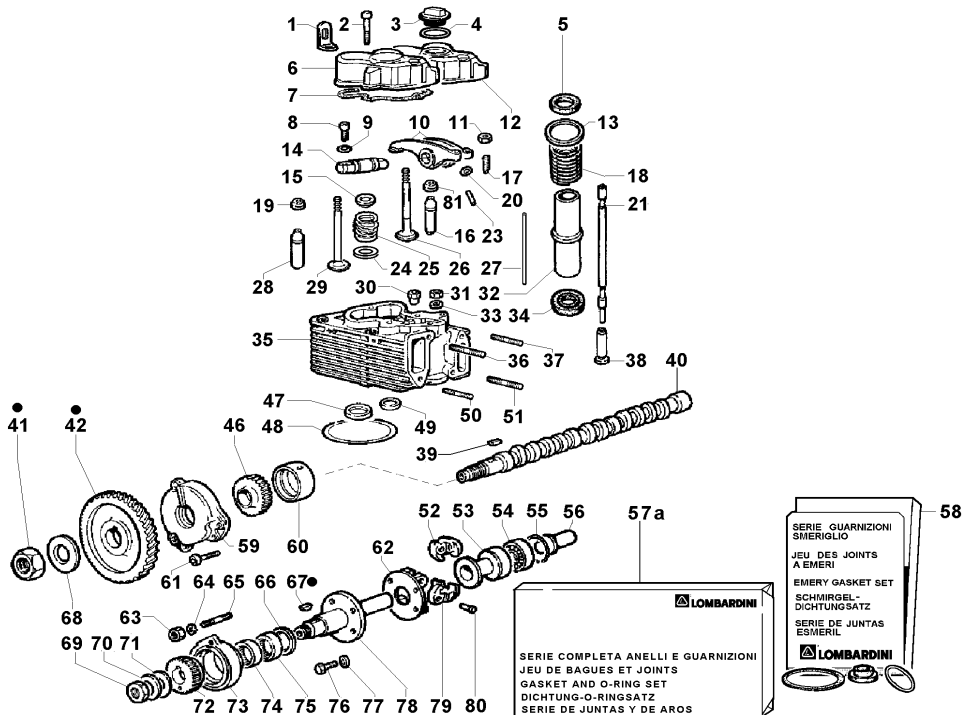


| Pos. | Matricola Code | Q.tà Q.ty | Descrizione | Description | Modifiche Improvement |
|------|----------------|--------------|---|-----------------------------|--------------------------|
| B 58 | «——» | 1 1 | vedi Pos. C 60 | see Pos. C 60 | |
| B 59 | 4601.044 | 1 1 | guarnizione | gasket | |
| B 61 | 1510.272 | 1 1 | BASAMENTO Pos. 17-19-27-28-29-31-40-41-55-56-58-61-D 64-D 65-D 66-D 67-D 69-D 71-D 80-D 81-D 82-D 83-D 84-D 85-D 99-D101-D102-D103-D104-E 53-E100-F 66 | CRANKCASE | |
| B 64 | 4431.145 | 1 1 | guarnizione | gasket | |
| B 65 | 2710.062 | 1 1 | coperchio | cover | |
| B 67 | 9730.107 | 3 3 | vite M 6 X 14 | screw M 6 X 14 | |
| B 68 | 2615.040 | 1 1 | coperchio alb.camme | camshaft cover | |
| B 69 | 4431.146 | 1 1 | guarnizione | gasket | |
| B 70 | 9732.074 | 9 9 | vite M 8 X 20 | screw M 8 X 20 | |
| B 71 | 6647.060 | 1 1 | portina | gear cover | |
| B 72 | 9730.031 | 3 3 | vite M 8 X 40 | screw M 8 X 40 | |
| B 73 | 9732.074 | 1 1 | vite M 8 X 20 | screw M 8 X 20 | |
| B 75 | 4501.110 | 1 1 | guarnizione | gasket | |
| B 78 | 1770.156 | 3 3 | bullone M 8 X 1,25 X 25 | bolt M 8 X 1,25 X 25 | |
| B 79 | 1240.041 | 1 1 | anello seeger | circlip | |
| B 80 | 7626.064 | 1 1 | rondella | washer | |
| B 81 | 5900.015 | 1 1 | mozzetto | hub | |
| B 83 | 3855.033 | 1 1 | flangia att.pompa oleod. 3° p.m. | flange for hydr.pump 3° PTO | |
| B 84 | 1202.017 | 1 1 | anello OR | O ring | |
| B 85 | 8780.019 | 1 1 | supporto ingranaggio | gear support | |
| B 86 | 1611.029 | 1 1 | bronzina | bushing | |
| B 87 | 9730.100 | 3 3 | vite M 8 X 25 | screw M 8 X 25 | |
| B 88 | 4936.055 | 1 1 | ingranaggio | gear | |

**TESTA/CAPPELLO BIL.
VALVOLE/DISTRIBUZIONE
REGOLATORE GIRI**

**CYLINDER HEAD
ROCKER ARM BOX/VALVES
TIMING/SPEED GOVERNOR**

C
11LD



| | | | |
|---------------------|----------------------|--|---------------------------------|
| Versione Version | K 2A50C1 K 2A55C1 | | Motore/Engine 11LD 626-3 |
|---------------------|----------------------|--|---------------------------------|

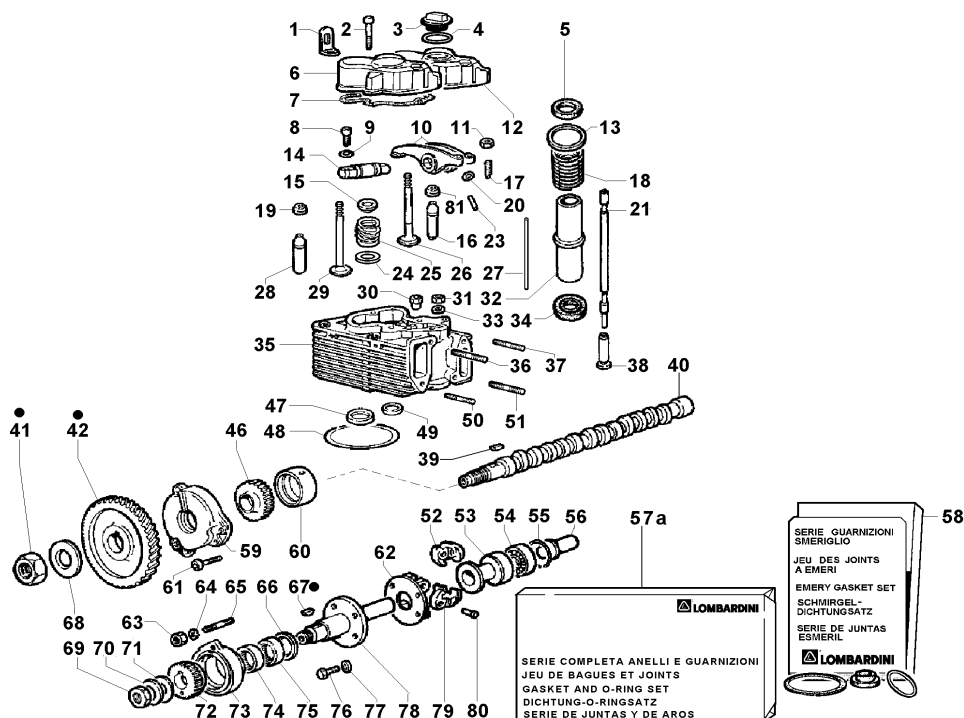
| Pos. | Matricola Code | Q.tà Q.ty | Descrizione | Description | Modifiche Improvement |
|------|-------------------|--------------|--|---|--------------------------|
| C 1 | 8506.003 | 3 3 | squadretta | engine lifting eye | |
| C 2 | 9732.075 | 6 6 | vite M 8 X 50 | screw M 8 X 50 | |
| C 3 | 9032.079 | 1 1 | TAPPO RIFORN. OLIO M 36X3 Pos. 3-4 | FILLER OIL CAP M 36X3 | |
| C 4 | 1200.015 | 1 1 | anello OR 137 per tappo rif. | O ring 137 for filler oil cap | |
| C 5 | 4740.029 | 3 3 | guarnizione | gasket | |
| C 6 | 2125.339 | 2 2 | cappello bil. | rocker arm cover | |
| C 7 | 4400.061 | 3 3 | guarnizione 0,80 | rocker cov.gasket 0,80 | |
| C 8 | 9730.100 | 6 6 | vite M 8 X 25 | screw M 8 X 25 | |
| C 9 | 7565.007 | 6 6 | rondella diam. 8 | washer diam. 8 | |
| C 10 | 4330.036 | 3 3 | GRUPPO BILANC. std Pos. 8-9-10-11-14-17-20-23 | ROCK.ARM ASS.Y std | |
| C 11 | 3240.008 | 6 6 | dado M 6 | nut M 6 | |
| C 12 | 2125.338 | 1 1 | cappello con foro tappo rif.olio | rocker arm cover with hole for oil filler | |
| C 13 | 7625.108 | 3 3 | rondella | washer | |
| C 14 | 6045.040 | 3 3 | perno bilancieri | rocker arm shaft | |
| C 15 | 6410.112 | 6 6 | piattello con semiconi | retainer with half-collets | |
| C 16 | 4845.248 | 3 3 | guida v.sc. std. | exhaust v.guide std. | |
| C 17 | 9850.002 | 6 6 | vite registro bilanc. | rocker arm adjuster | |
| C 18 | 5801.153 | 3 3 | molla | spring | |
| C 19 | 1213.338 | 3 3 | anello tenuta valvola | seal ring for valve | |
| C 20 | 1350.011 | 3 3 | anello | ring | |
| C 21 | 1410.053 | 6 6 | asta punteria | push rod | |

segue in C/2
continues into C/2

TESTA/CAPPELLO BIL.
VALVOLE/DISTRIBUZIONE
REGOLATORE GIRI

CYLINDER HEAD
ROCKER ARM BOX/VALVES
TIMING/SPEED GOVERNOR

C
11LD



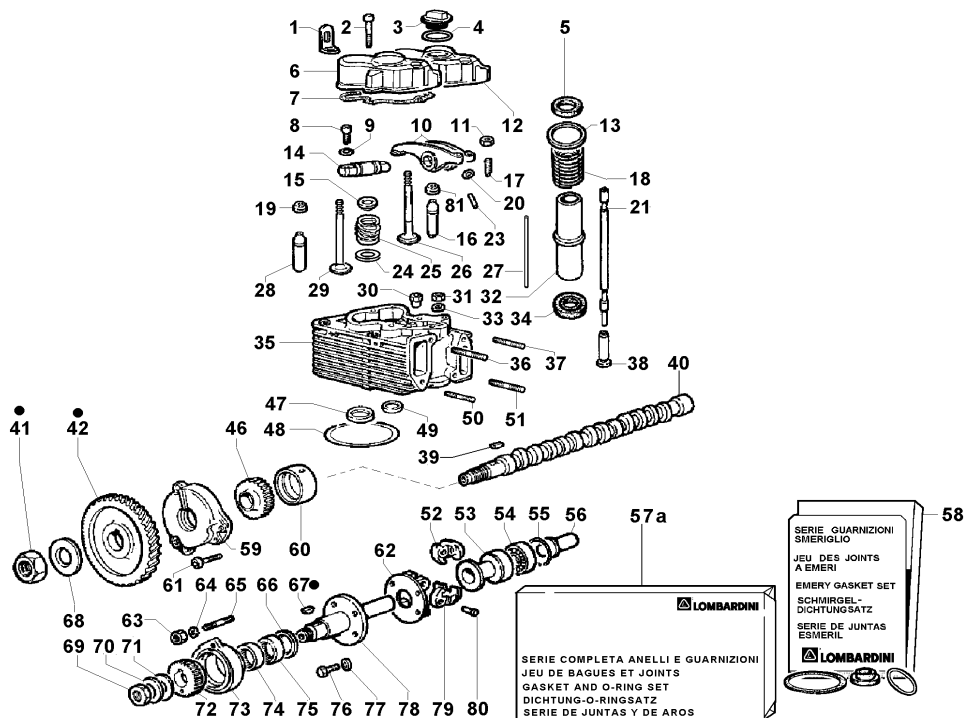
| Versione Version | K 2A50C1 K 2A55C1 | | | Motore/Engine 11LD 626-3 | | |
|---------------------|----------------------|--------------|---|---------------------------------|--------------------------|--|
| Pos. Code | Matricola Code | Q.tà Q.ty | Descrizione | Description | Modifiche Improvement | |
| C 23 | 9455.053 | 3 3 | tubo lubrificaz. bilancieri | rocker shaft lub.pipe | | |
| C 24 | 3430.067 | 6 6 | dischetto (bottom) | spring seat (bottom) | | |
| C 25 | 5755.004 | 6 6 | molla valvola | valve spring | | |
| C 26 | 9685.146 | 3 3 | valvola di scarico | exhaust valve | | |
| C 27 | 9455.065 | 3 3 | tubo lubrificaz. | lubricating pipe | | |
| C 28 | 4845.247 | 3 3 | guida v.asp. std. | inlet v.guide std. | | |
| C 29 | 9652.153 | 3 3 | valvola aspirazione | intake valve | | |
| C 31 | 3240.124 | 12 12 | dado | nut | | |
| C 32 | 9520.053 | 3 3 | tubo prot. | guard tube | | |
| C 33 | 7625.196 | 12 12 | rondella diam. 10,5 | washer diam.10,5 | | |
| C 34 | 4740.029 | 3 3 | guarnizione | gasket | | |
| C 35 | 9200.733 | 3 3 | TESTA COMPLETA (EPA) Pos. 16-28-35-47-49 | CYL.HEAD ASS.Y (EPA) | | |
| C 36 | 6780.031 | 3 3 | prigioniero M 8 X 75 (87) | stud M 8 X 75 (87) | | |
| C 37 | 6780.084 | 3 3 | prigioniero M 8 X 40 (52) | stud M 8 X 40 (52) | | |
| C 38 | 7215.043 | 6 6 | punteria | tappet | | |
| C 39 | 2280.056 | 1 1 | chiavetta | crankshaft woodruff key | | |
| C 40 | 1011.600 | 1 1 | albero a camme (EPA) | camshaft (EPA) | | |
| C 41 | 3260.044 | 1 1 | dado | nut | | |
| C 42 | 4936.050 | 1 1 | ingranaggio | gear | | |
| C 46 | 4936.052 | 1 1 | ingranaggio | gear | | |
| C 47 | 8000.212 | 3 3 | sede v.aspirazione | inlet v.seat | | |

segue in C/3
continues into C/3

TESTA/CAPPELLO BIL.
VALVOLE/DISTRIBUZIONE
REGOLATORE GIRI

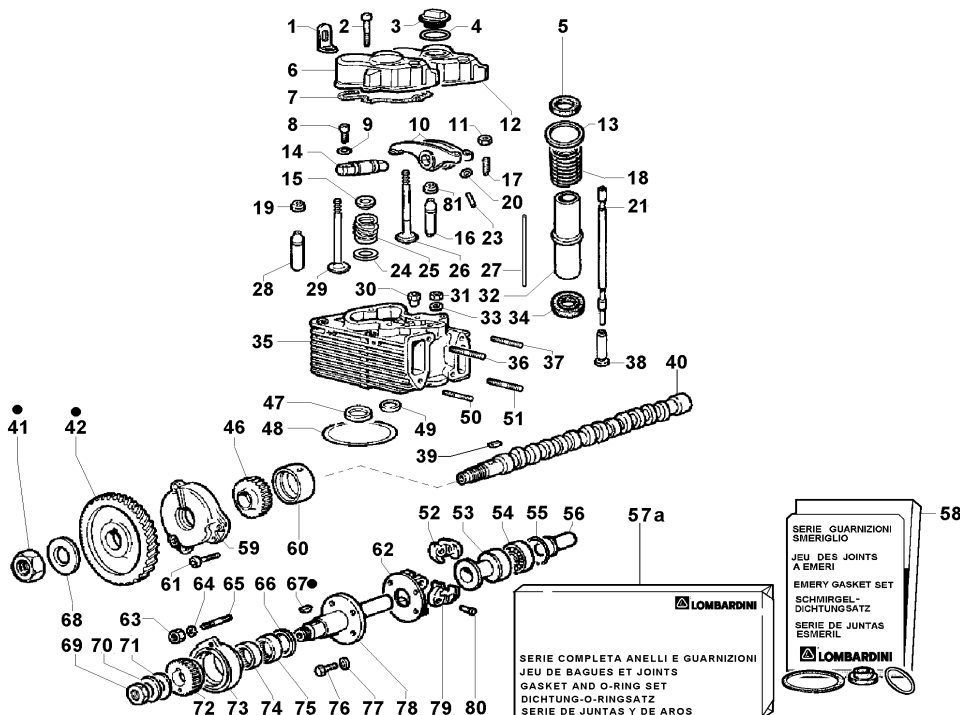
CYLINDER HEAD
ROCKER ARM BOX/VALVES
TIMING/SPEED GOVERNOR

C
11LD



| Versione Version | K 2A50C1 K 2A55C1 | Q.tà Q.ty | Descrizione | Description | Modifiche Improvement |
|---------------------|----------------------|--------------|--|---------------------|------------------------------------|
| | | | Motore/Engine 11LD 626-3 | | |
| C 48 | 4730.349 | 3 3 | guarnizione testa 0,60 | head gasket 0,60 | |
| C 48 | 4730.084 | 3 3 | guarnizione testa 0,60 | head gasket 0,60 | |
| C 48 | 4730.085 | 3 3 | guarnizione testa 0,70 | head gasket 0,70 | |
| C 48 | 4730.086 | 3 3 | guarnizione testa 0,80 | head gasket 0,80 | |
| C 48 | 4730.087 | 3 3 | guarnizione testa 0,90 | head gasket 0,90 | |
| C 48 | 4730.088 | 3 3 | guarnizione testa 1,00 | head gasket 1,00 | |
| C 48 | 4730.193 | 3 3 | guarnizione testa 0,65 | head gasket 0,65 | |
| C 48 | 4730.194 | 3 3 | guarnizione testa 0,75 | head gasket 0,75 | |
| C 48 | 4730.195 | 3 3 | guarnizione testa 0,85 | head gasket 0,85 | |
| C 48 | 4730.196 | 3 3 | guarnizione testa 0,95 | head gasket 0,95 | |
| C 48 | 4730.197 | 3 3 | guarnizione testa 1,05 | head gasket 1,05 | |
| C 48 | 4730.319 | 3 3 | guarnizione testa 1,10 | head gasket 1,10 | |
| C 48 | 4730.320 | 3 3 | guarnizione testa 1,15 | head gasket 1,15 | |
| C 49 | 8000.213 | 3 3 | sede v.scario | exhaust v.seat | |
| C 50 | 6780.084 | 3 3 | prigioniero M 8 X 40 (52) | stud M 8 X 40 (52) | |
| C 51 | 6780.034 | 3 3 | prigioniero M 8 X 95 (107) | stud M 8 X 95 (107) | |
| C 52 | «———» | | vedi Pos. C 62 | see Pos. C 62 | |
| C 53 | 6410.048 | 1 1 | PIATTELLO REGOLATORE Pos. 53-54-55-56 | GOVERNOR ROD | |
| C 54 | 3010.055 | 1 1 | cuscinetto | ball bearing | |
| C 55 | 1160.012 | 1 1 | anello tenuta | circlip | |
| C 56 | «———» | | vedi Pos. C 53 | see Pos. C 53 | |
| | | | | | segue in C/4 continues into C/4 |

C
11LD

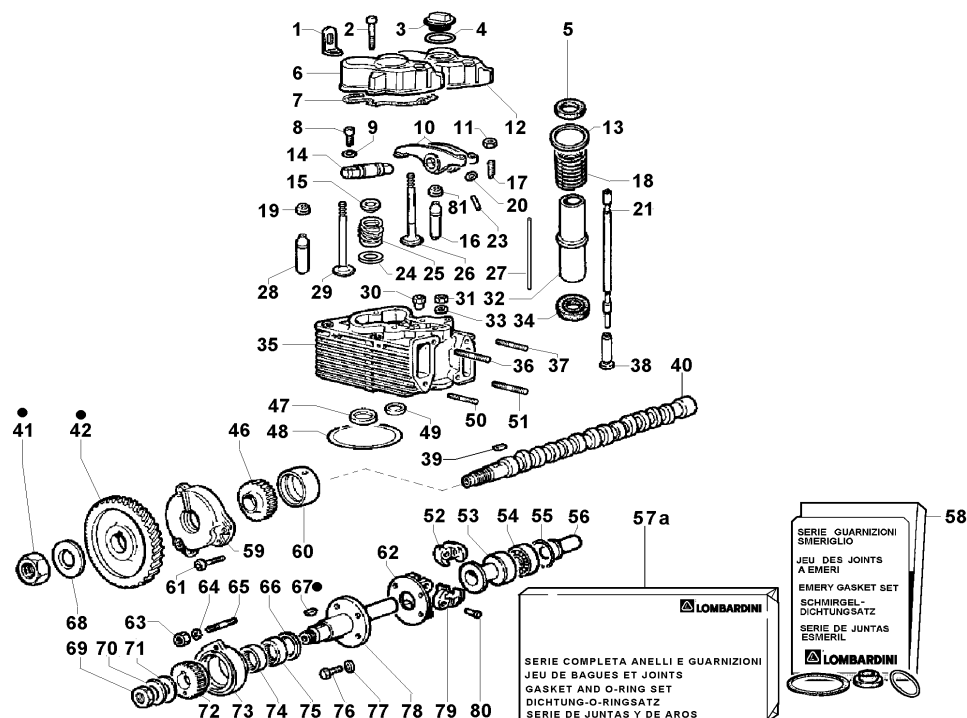


| Versione Version | | K 2A50C1 | K 2A55C1 | Motore/Engine 11LD 626-3 | | |
|---------------------|-------------------|--------------|-------------|--|----------------------------|------------------------------|
| Pos. | Matricola Code | Q.tà Q.ty | Descrizione | | Description | Modifiche Improvement |
| C 57a | 8205.101 | 1 | 1 | SERIE COMPLETA ANELLI E GUARNIZIONI Pos. A14-A25-A42-A54-A67-B43-B59-B64-B69-B74-C 5-C 7-C19-C34-C48-D59-D62-D86-D98-D126-E 3-E35-E37-E38-E46-E50-E59-E75-E77-E79-E87-E91-E96-E98 | | RING AND GASKET COMPLETE SET |
| C 58 | 8185.026 | 1 | 1 | SERIE SMERIGLIO Pos. A 14-A 25-A 42-A 54-C 4-C 5-C 7-C 19-C 34-C 48-E 3-E 35-E 37-E 38-E 46-E 50-E 59-E 77-E 79-E 96-E 99 | | EMERY GASKET SET |
| C 59 | 2086.169 | 1 | 1 | campana | bell | |
| C 60 | 1600.062 | 1 | 1 | bronzina alb.camme std. | camshaft bearing std. | |
| C 60 | 1600.063 | 1 | 1 | bronzina alb.camme -0,25 | camshaft bearing -0,25 | |
| C 60 | 1600.064 | 1 | 1 | bronzina alb.camme -0,50 | camshaft bearing -0,50 | |
| C 61 | 9730.100 | 3 | 3 | vite M 8 X 25 | screw M 8 X 25 | |
| C 62 | 5496.108 | 1 | 1 | MASSA REG. Giri/min >2000 Pos. 52-62-79-80 | WEIGHT SP.GOV.R.P.M. >2000 | |
| C 63 | 3240.018 | 2 | 2 | dado M 8 | nut M 8 | |
| C 64 | 7565.007 | 2 | 2 | rondella diam. 8 | washer diam. 8 | |
| C 65 | 6780.052 | 2 | 2 | prigioniero M 8 X 18 (28) | stud M 8 X 18 (28) | |
| C 66 | 7352.022 | 1 | 1 | ralla | thrust washer | |
| C 67 | 2280.061 | 1 | 1 | chiavetta 3X3,7X10 | key 3X3,7X10 | |
| C 68 | 5715.005 | 1 | 1 | molla a tazza | washer | |
| C 69 | 3240.066 | 1 | 1 | dado M 10 | nut M 10 | |
| C 70 | 7748.023 | 1 | 1 | rondella | washer | |
| C 71 | 7625.020 | 1 | 1 | rondella diam. 10,5 | washer diam.10,5 | |

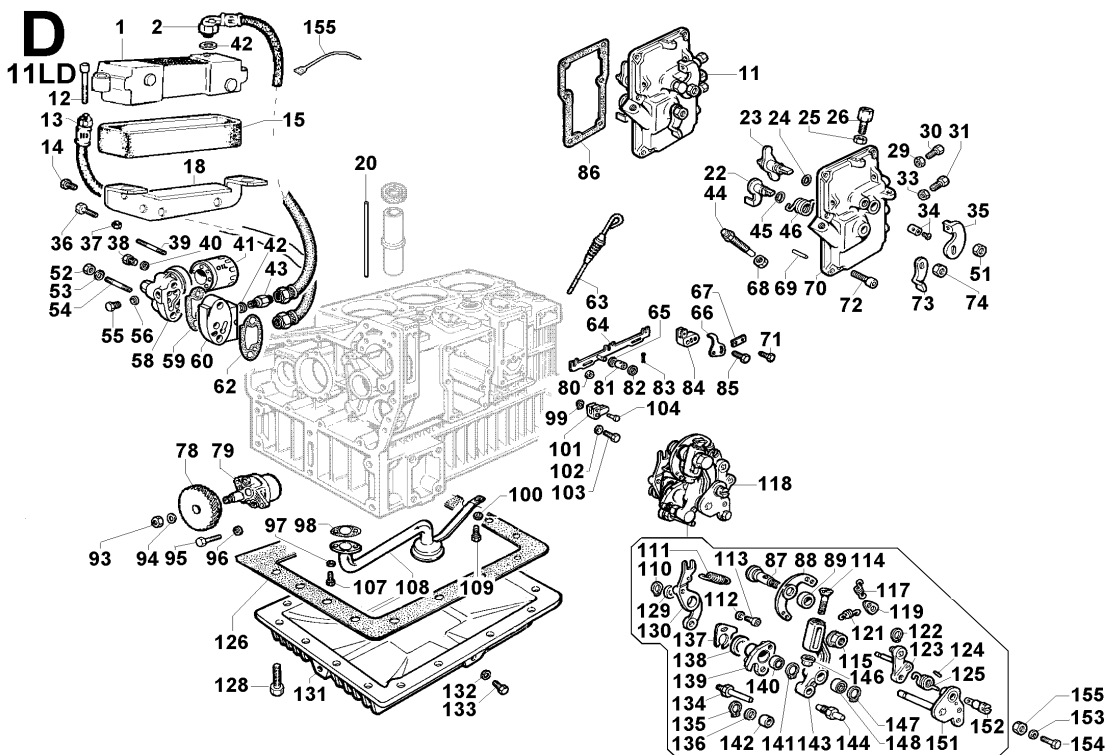
TESTA/CAPPELLO BIL.
VALVOLE/DISTRIBUZIONE
REGOLATORE GIRI

CYLINDER HEAD
ROCKER ARM BOX/VALVES
TIMING/SPEED GOVERNOR

C
11LD



| Pos. | Matricola Code | Q.tà Q.ty | Descrizione | Description | Modifiche Improvement |
|------|----------------|--------------|--|--------------------------------|--------------------------|
| C 72 | 4936.053 | 1 | ingranaggio | gear | |
| C 73 | «———» | 1 | supporto regolatore - vedi Pos. 78 | governor support - see Pos. 78 | |
| C 74 | 1585.052 | 1 | boccola | bushing | |
| C 75 | 1585.052 | 1 | boccola | bushing | |
| C 76 | 9730.003 | 4 | vite M 5 X 10 | screw M 5 X 10 | |
| C 77 | 7565.003 | 4 | rondella diam. 5 | washer diam. 5 | |
| C 78 | 7362.152 | 1 | REGOLATORE GIRI Giri/min > 20 Pos. 52-62-65-66-67-69-70-71-73-74-75-76-77-78-80 | SPEED GOVERN. R.P.M. > 2001 | |
| C 79 | «———» | | vedi Pos. C 62 | see Pos. C 62 | |
| C 80 | 8445.021 | 2 | spina | taper pin | |
| C 81 | 1213.338 | 3 | anello tenuta valvola | seal ring for valve | |



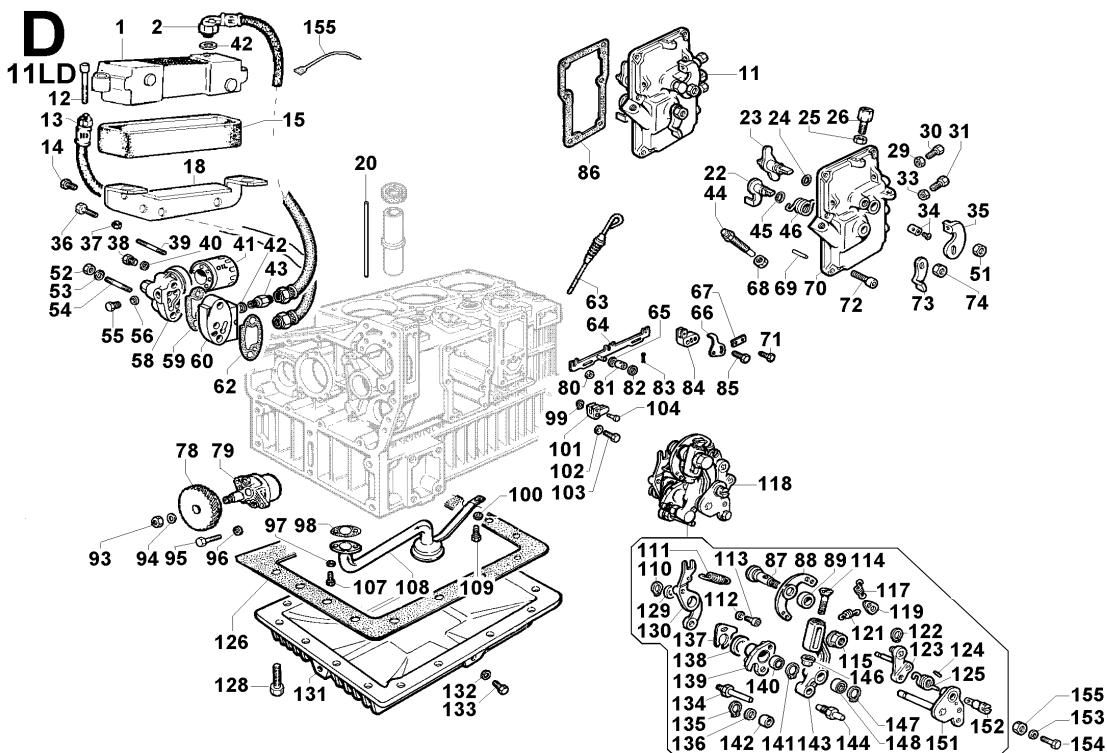
| | | | |
|---------------------|----------------------|--|---------------------------------|
| Versione Version | K 2A50C1 K 2A55C1 | | Motore/Engine 11LD 626-3 |
|---------------------|----------------------|--|---------------------------------|

| Pos. | Matricola Code | Q.tà Q.ty | Descrizione | Description | Modifiche Improvement |
|------|-------------------|--------------|----------------------------|--------------------------------|--------------------------|
| D 1 | 7350.052 | 1 1 | radiatore olio | oil cooler | |
| D 2 | 9485.177 | 1 1 | tubo olio mm 400 | oil pipe mm 400 | |
| D 11 | 2690.149 | 1 1 | com.acc.e stop a dist. | accel. and stop remote control | |
| D 12 | 9730.032 | 2 2 | vite M 8 X 45 | screw M 8 X 45 | |
| D 13 | 9485.176 | 1 1 | tubo olio mm 175 | oil pipe mm 175 | |
| D 14 | 9732.092 | 3 3 | vite M 8 X 18 | screw M 8 X 18 | |
| D 15 | 4775.422 | 1 1 | guarnizione radiatore | cooler guard | |
| D 18 | 8545.271 | 1 1 | staffa | brace | |
| D 20 | «——» | | vedi Pos. C 27 | see Pos. C 27 | |
| D 22 | 6140.143 | 1 1 | perno | pin | |
| D 23 | «——» | | vedi Pos. D 9/D 11/D 27 | see Pos. D 9/D 11/D 27 | |
| D 24 | 1200.034 | 1 1 | anello OR 105 | O ring 105 | |
| D 25 | 3240.019 | 2 2 | dado ottone M 8 | nut M 8 alpha brass | |
| D 26 | 9180.192 | 2 2 | terminale | cab end | |
| D 29 | 3240.008 | 1 1 | dado M 6 | nut M 6 | |
| D 30 | 1760.028 | 1 1 | bullone M 6 X 1 X 35 | bolt M 6 X 1 X 35 | |
| D 31 | 1760.028 | 1 1 | bullone M 6 X 1 X 35 | bolt M 6 X 1 X 35 | |
| D 33 | 3240.008 | 1 1 | dado M 6 | nut M 6 | |
| D 34 | 5830.119 | 2 2 | morsetto | nut | |
| D 35 | 5200.178 | 1 1 | leva | lever | |
| D 36 | 1770.056 | 1 1 | bullone M 8 X 1,25 X 18 | bolt M 8 X 1,25 X 18 | |
| D 37 | 3240.164 | 2 2 | Dado M 8 flangiato | nut M 8 | |
| D 38 | 8965.034 | 1 1 | tappo | plug | |
| D 39 | 6780.034 | 1 1 | prigioniero M 8 X 95 (107) | stud M 8 X 95 (107) | |
| D 40 | 4670.058 | 1 1 | guarnizione in rame d.8 | copper gasket diam. 8 | |
| D 41 | 2175.040 | 1 1 | cartuccia olio | oil filter cartridge | |
| D 42 | 4670.019 | 4 4 | guarniz.rame d.16 | copper gasket diam.16 | |

segue in D/2
continues into D/2

**COMANDI
CIRCUITO LUBRIFICAZIONE**

**CONTROLS
LUBRICATING SYSTEM**



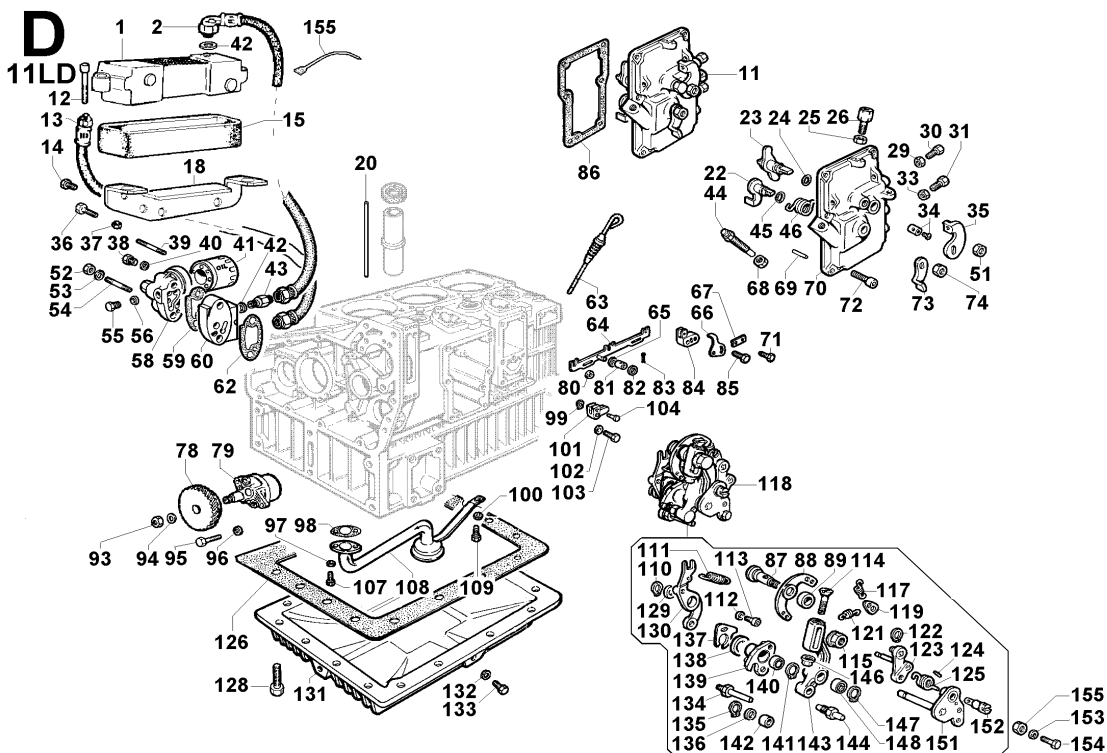
| | | | |
|---------------------|----------------------|--|---------------------------------|
| Versione Version | K 2A50C1 K 2A55C1 | | Motore/Engine 11LD 626-3 |
|---------------------|----------------------|--|---------------------------------|

| Pos. | Matricola Code | Q.tà Q.ty | Descrizione | Description | Modifiche Improvement |
|------|-------------------|--------------|--|-----------------------|--------------------------|
| D 43 | 5953.036 | 4 4 | niplo | nipple | |
| D 44 | 8576.021 | 1 1 | supplemento coppia | extra fuel device | |
| D 45 | 1200.034 | 1 1 | anello OR 105 | O ring 105 | |
| D 46 | 5680.096 | 1 1 | molla | spring | |
| D 51 | 3240.164 | 1 1 | Dado M 8 flangiato | nut M 8 | |
| D 52 | 3240.018 | 2 2 | dado M 8 | nut M 8 | |
| D 53 | 7625.010 | 2 2 | rondella diam. 8 | washer diam. 8 | |
| D 54 | 6780.028 | 1 1 | prigioniero M 8 X 55 (67) | stud M 8 X 55 (67) | |
| D 55 | 8965.021 | 1 1 | tappo M 8 | plug M 8 | |
| D 56 | 4670.014 | 1 1 | guarnizione in rame d.12 | copper gasket diam.12 | |
| D 58 | 3740.159 | 1 1 | FILTRO OLIO Pos. 38-40-41-55-56-58 | OIL FILTER | |
| D 59 | 4730.533 | 1 1 | guarnizione | gasket | |
| D 60 | 6370.137 | 1 1 | piastra | plate | |
| D 62 | 4730.533 | 1 1 | guarnizione | gasket | |
| D 63 | 1400.407 | 1 1 | asta livello (mm 285) | dipstick (mm 285) | |
| D 64 | 1380.024 | 1 1 | ASTA COMANDO Pos. 64-65-80-81-82-83-84-99-101 | CONTROL ROD | |
| D 65 | 7625.005 | 1 1 | rondella diam. 5 | washer diam. 5 | |
| D 66 | 6275.101 | 1 1 | piastra | plate | |
| D 67 | 5111.080 | 1 1 | lamierino | safety plate | |
| D 68 | 3240.061 | 1 1 | dado M 12 | nut M 12 | |
| D 69 | 8460.055 | 2 2 | spina | locating dowel | |

segue in D/3
continues into D/3

COMANDI
CIRCUITO LUBRIFICAZIONE

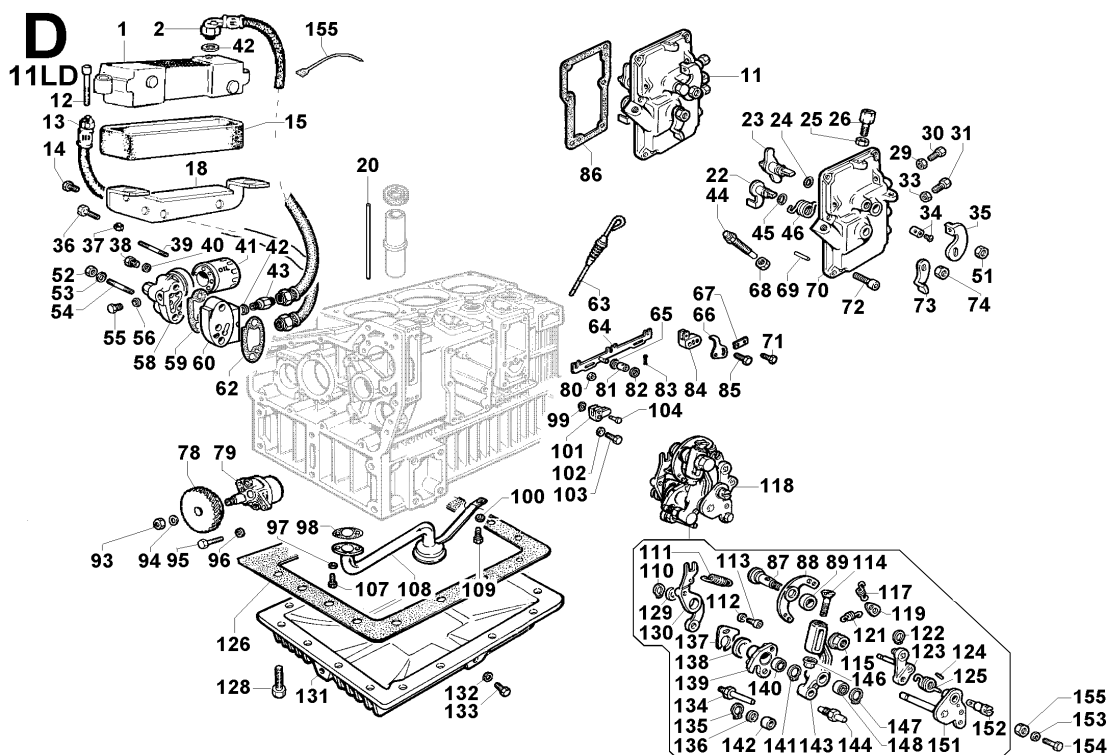
CONTROLS
LUBRICATING SYSTEM



| | | | |
|---------------------|----------------------|--|---------------------------------|
| Versione Version | K 2A50C1 K 2A55C1 | | Motore/Engine 11LD 626-3 |
|---------------------|----------------------|--|---------------------------------|

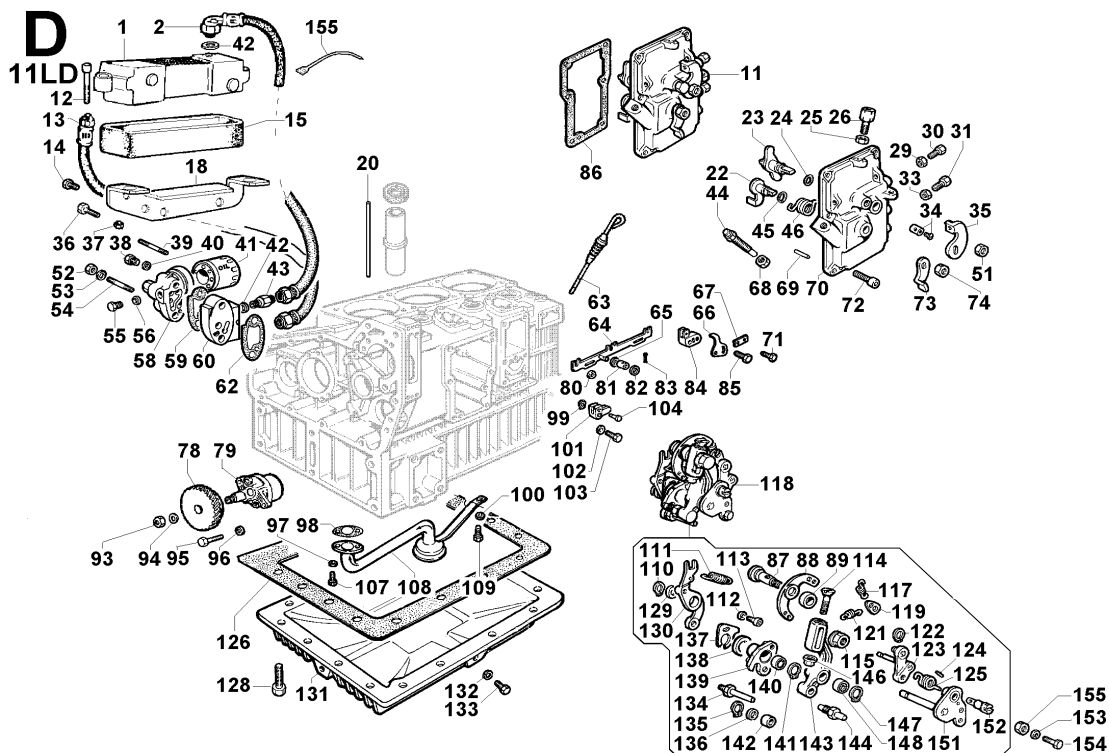
| Pos. | Matricola Code | Q.tà Q.ty | Descrizione | Description | Modifiche Improvement |
|------|-------------------|--------------|-------------------------|----------------------|--------------------------|
| D 70 | «——» | | vedi Pos. D 11 | see pos. D 11 | |
| D 71 | 1760.003 | 1 1 | bullone M 6 X 1 X 12 | bolt M 6 X 1 X 12 | |
| D 72 | 9730.100 | 6 6 | vite M 8 X 25 | screw M 8 X 25 | |
| D 73 | 5200.178 | 1 1 | leva | lever | |
| D 74 | 3240.164 | 1 1 | Dado M 8 flangiato | nut M 8 | |
| D 78 | 4936.051 | 1 1 | ingranaggio | gear | |
| D 79 | 6605.062 | 1 1 | pompa olio | lub.oil pump | |
| D 80 | 1971.044 | 2 2 | bussola | sleeve | |
| D 81 | 1580.023 | 1 1 | boccola | bushing | |
| D 82 | 7625.005 | 1 1 | rondella diam. 5 | washer diam. 5 | |
| D 83 | 2800.003 | 1 1 | copiglia | cotter pin | |
| D 84 | «——» | | vedi Pos. D 64 | see Pos. D 64 | |
| D 85 | 1760.010 | 1 1 | bullone M 6 X 1 X 30 | bolt M 6 X 1 X 30 | |
| D 86 | 4775.524 | 1 1 | guarnizione | gasket | |
| D 87 | 6110.078 | 1 1 | perno | pin | |
| D 88 | «——» | | vedi Pos. D 118 | see pos. D 118 | |
| D 89 | «——» | | vedi Pos. D 118 | see pos. D 118 | |
| D 93 | 3240.036 | 1 1 | dado M 10 | nut M 10 | |
| D 94 | 7565.011 | 1 1 | rondella diam. 10 | washer diam.10 | |
| D 95 | 1770.031 | 2 2 | bullone M 8 X 1,25 X 50 | bolt M 8 X 1,25 X 50 | |
| D 96 | 7565.007 | 2 2 | rondella diam. 8 | washer diam. 8 | |
| D 97 | 7565.004 | 2 2 | rondella diam. 6 | washer diam. 6 | |
| D 98 | 4501.025 | 1 1 | guarnizione | gasket | |
| D 99 | 1165.001 | 2 2 | anello benzing | circlip | |
| D100 | 7565.007 | 1 1 | rondella diam. 8 | washer diam. 8 | |
| D101 | «——» | | vedi Pos. D 64 | see Pos. D 64 | |
| D102 | 7748.022 | 1 1 | rondella | washer | |

segue in D/4
continues into D/4

COMANDI
CIRCUITO LUBRIFICAZIONE
CONTROLS
LUBRICATING SYSTEM


| Pos. | Matricola Code | Q.tà Q.ty | Descrizione | Description | Modifiche Improvement |
|------|----------------|-----------|--------------------------------------|-----------------------------|-----------------------|
| D103 | 1760.006 | 1 1 | bullone M 6 X 1 X 20 | bolt M 6 X 1 X 20 | |
| D104 | 6210.031 | 2 2 | perno | pin | |
| D107 | 1760.006 | 2 2 | bullone M 6 X 1 X 20 | bolt M 6 X 1 X 20 | |
| D108 | 3740.058 | 1 1 | filtro olio | oil filter | |
| D109 | 1770.002 | 1 1 | bullone M 8 X 1,25 X 16 | bolt M 8 X 1,25 X 16 | |
| D110 | 1240.002 | 1 1 | anello seeger d.8 | circlip diam. 8 | |
| D111 | 5550.027 | 1 1 | molla supplm. | extra fuel spring | |
| D112 | 7625.012 | 1 1 | rondella diam. 8,4 | washer diam. 8,4 | |
| D113 | 9730.138 | 1 1 | vite M 8 X 16 | screw M 8 X 16 | |
| D114 | 9800.087 | 1 1 | vite M 6 X 45 | screw M 6 X 45 | |
| D115 | 3240.164 | 1 1 | Dado M 8 flangiato | nut M 8 | |
| D117 | 5655.349 | 1 1 | molla reg >2000 Giri/min | speed g.spring >2000 R.P.M. | |
| D118 | 5200.848 | 1 1 | leva com.reg. 3000 Giri/min | control lever 3000 R.P.M. | |
| D119 | 6370.489 | 1 1 | piastra | plate | |
| D121 | 5655.349 | 1 1 | molla reg 1500 Giri/min | speed g.spring 1500 R.P.M. | |
| D122 | 1240.001 | 1 1 | anello seeger | snap ring | |
| D123 | «———» | | leva - vedi Pos. D 118 | lever - see Pos. D 118 | |
| D124 | 8430.023 | 1 1 | spina 3 X 16 | lockpin 3 X 16 | |
| D125 | 5680.082 | 1 1 | molla | spring | |
| D126 | 4601.045 | 1 1 | guarnizione | gasket | |
| D128 | 1770.155 | 26 26 | bullone M 8 X 1,25 X 30 | bolt M 8 X 1,25 X 30 | |
| D129 | 7626.097 | 1 1 | rondella | washer | |
| D130 | «———» | | vedi Pos. D 118 | see Pos. D 118 | |
| D131 | 6645.132 | 1 1 | PORTINA DI FONDO Pos. 131-132-133 | OIL PAN | |

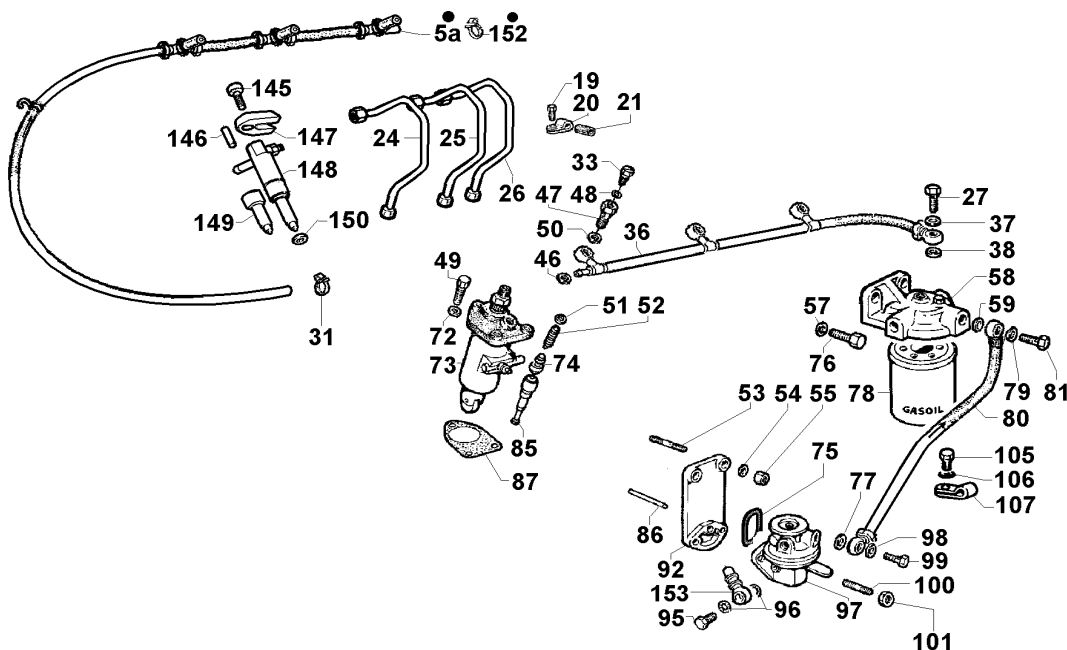
segue in D/5
continues into D/5



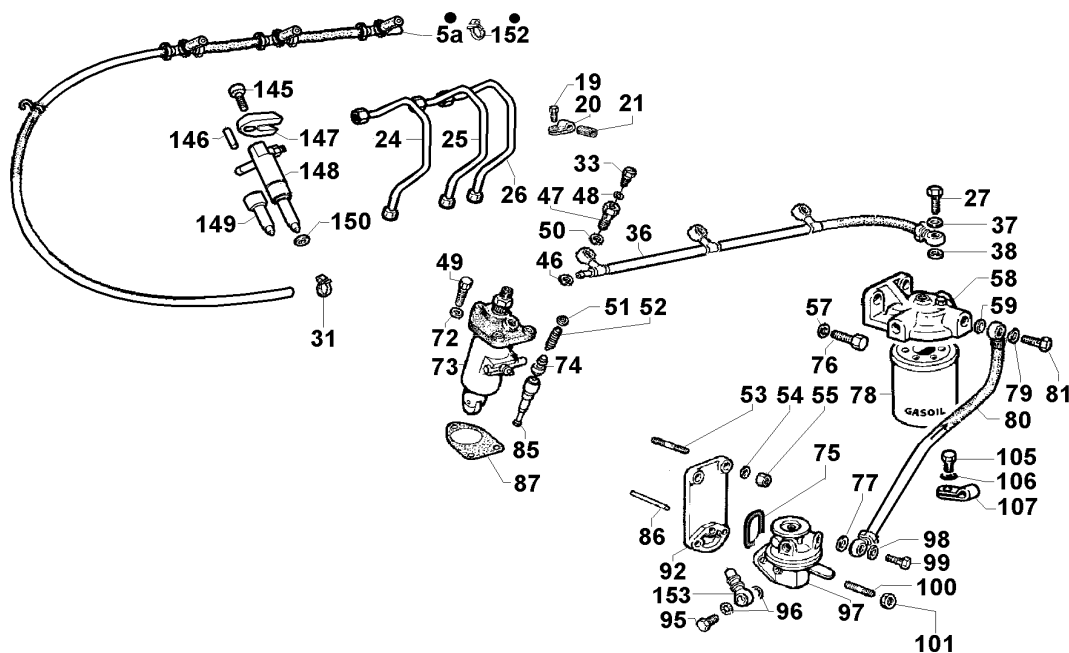
| Pos. | Matricola Code | Q.tà Q.ty | Descrizione | Description | Modifiche Improvement |
|------------------|----------------|----------------------|---------------------------------|-----------------------|-----------------------|
| Versione Version | | K 2A50C1 K 2A55C1 | Motore/Engine 11LD 626-3 | | |
| D132 | 4670.016 | 2 2 | guarnizione in rame d.14 | copper gasket diam.14 | |
| D133 | 8965.005 | 2 2 | tappo scarico olio M 14 | oil drain plug M 14 | |
| D134 | 6231.075 | 1 1 | perno | pin | |
| D135 | 1175.042 | 1 1 | anello | ring | |
| D136 | 7625.106 | 1 1 | rondella diam. 7,1 | washer diam. 7,1 | |
| D137 | 6366.012 | 1 1 | piastrina | plate | |
| D138 | «——» | | vedi Pos. D 118 | see Pos. D 118 | |
| D139 | 5200.307 | 1 1 | leva rinvio | counter lever | |
| D140 | 3000.026 | 2 2 | cuscinetto 8X16X4 | ball bearing 8X16X4 | |
| D141 | 1240.010 | 2 2 | anello seeger | snap ring | |
| D142 | 1301.156 | 1 1 | anello | ring | |
| D143 | «——» | | vedi Pos. D 118 | see Pos. D 118 | |
| D144 | «——» | | vedi Pos. D 118 | see Pos. D 118 | |
| D146 | 3203.050 | 1 1 | dado autoblocc. M 6 | selflocking nut M 6 | |
| D147 | 1241.002 | 2 2 | anello seeger | snap ring | |
| D148 | 3000.025 | 2 2 | cuscinetto 608 | ball bearing 608 | |
| D151 | «——» | | vedi Pos. D 118 | see Pos. D 118 | |
| D152 | 6140.130 | 1 1 | perno | pin | |
| D153 | 7565.007 | 2 2 | rondella diam. 8 | washer diam. 8 | |
| D154 | 1770.056 | 2 2 | bullone M 8 X 1,25 X 18 | bolt M 8 X 1,25 X 18 | |
| D155 | 3240.018 | 2 2 | dado M 8 | nut M 8 | |
| D156 | 2471.014 | 2 2 | collare | collar | |

E

11LD



| Versione Version | | K 2A50C1 | K 2A55C1 | Motore/Engine 11LD 626-3 | | |
|---------------------|-------------------|--------------|---------------------------------|--|------------------------------------|--|
| Pos. | Matricola Code | Q.tà Q.ty | Descrizione | Description | Modifiche Improvement | |
| E 5a | 9571.229 | 1 1 | tubo spurgo (EPA) | bleeding pipe (EPA version) | | |
| E 19 | 9730.115 | 3 3 | vite M 5 X 14 | screw M 5 X 14 | | |
| E 20 | 3616.018 | 3 3 | fascetta fiss.tubi alta press. | injector feed pipe saddle | | |
| E 21 | 5400.046 | 3 3 | manicotto | rubber sheathing | | |
| E 24 | 9376.013 | 1 1 | tubo alta pr.l.dist.(EPA) | gear s.pipe(EPA) | | |
| E 25 | 9376.053 | 1 1 | tubo alta press.centrale (EPA) | high pressure middle pipe (EPA) | | |
| E 26 | 9376.053 | 1 1 | tubo alta press.l.volano (EPA) | high pressure pipe (flywheel side - EPA) | | |
| E 27 | 1901.032 | 1 1 | bullone raccordo M 14 | union bolt M 14 | | |
| E 31 | 3630.050 | 1 1 | fascetta clic d. 9-11 | clamp Oteco clic 55 | | |
| E 33 | 1901.171 | 3 3 | bullone M 6 | bolt | | |
| E 36 | 9375.613 | 1 1 | tubo filtro comb.-pm.in mm 344 | f.hose mm 344 | | |
| E 37 | 4670.061 | 1 1 | guarnizione in rame d.14 | copper gasket diam.14 | | |
| E 38 | 4670.061 | 1 1 | guarnizione in rame d.14 | copper gasket diam.14 | | |
| E 46 | 4670.060 | 3 3 | guarnizione in rame d.12 | copper gasket diam.12 | | |
| E 47 | 1901.031 | 3 3 | bullone raccordo M 12 | union bolt M 12 | | |
| E 48 | 4670.001 | 3 3 | guarniz.rame d.6 | copper gasket diam. 6 | | |
| E 49 | 9730.100 | 9 9 | vite M 8 X 25 | screw M 8 X 25 | | |
| E 50 | 4670.060 | 3 3 | guarnizione in rame d.12 | copper gasket diam.12 | | |
| E 51 | 7470.003 | 3 3 | riempitore | filler | | |
| E 52 | 5755.034 | 3 3 | molla valvola mandata tipo Omap | valve spring | | |
| E 53 | 6780.008 | 2 2 | prigioniero M 8 X 20 (32) | stud M 8 X 20 (32) | | |
| E 54 | 7565.007 | 2 2 | rondella diam. 8 | washer diam. 8 | | |
| E 55 | 3240.018 | 2 2 | dado M 8 | nut M 8 | | |
| E 57 | 7565.011 | 2 2 | rondella diam. 10 | washer diam.10 | | |
| E 58 | 3730.152 | 1 1 | FILTRO COMBUST. Pos. 58-78 | FUEL FILTER | segue in E/2 continues into E/2 | |

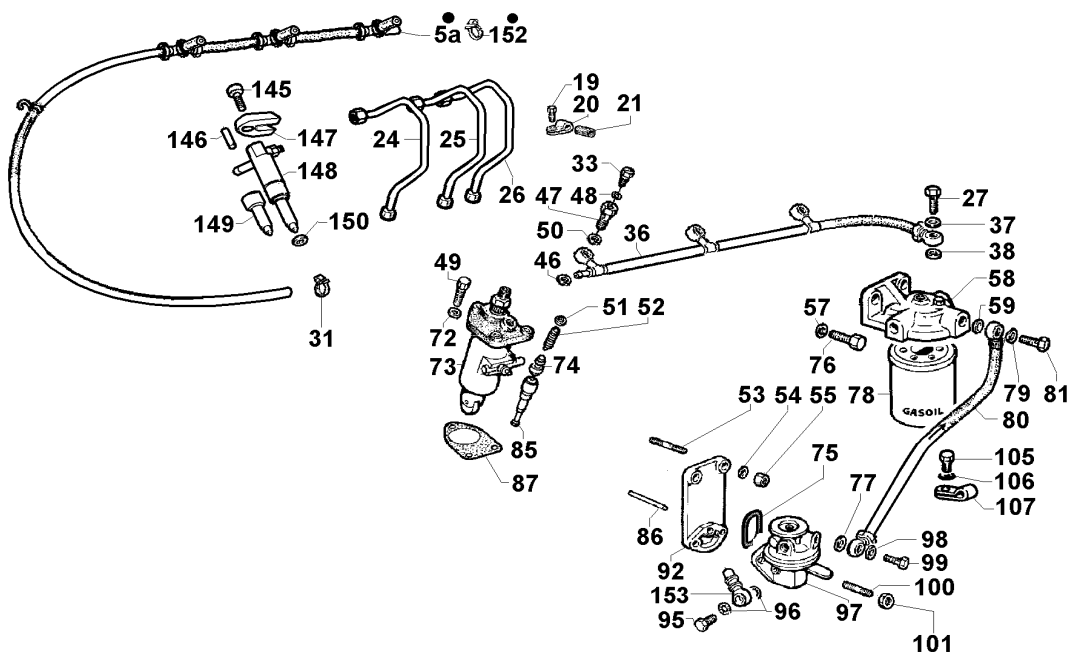
E**11LD**

| Versione Version | K 2A50C1 | K 2A55C1 | | | Motore/Engine 11LD 626-3 | | |
|---------------------|-------------------|--------------|---|--|---------------------------------|--------------------------|--------------------------|
| Pos. | Matricola Code | Q.tà Q.ty | | | Descrizione | Description | Modifiche Improvement |
| E 59 | 4670.061 | 1 | 1 | | guarnizione in rame d.14 | copper gasket diam.14 | |
| E 72 | 7625.010 | 9 | 9 | | rondella diam. 8 | washer diam. 8 | |
| E 73 | 6590.372 | 3 | 3 | | pompa iniezione classe B | class B injection pump | |
| E 73 | 6590.373 | 3 | 3 | | pompa iniezione classe C | class C injection pump | |
| E 74 | 9672.012 | 3 | 3 | | valvola di mandata (mmc 25) | delivery valve (mmc 25) | |
| E 75 | 1200.087 | 1 | 1 | | anello OR 3150 | O ring 3150 | |
| E 76 | 1780.004 | 2 | 2 | | bullone M 10 X 1,5 X 22 | bolt M 10 X 1,5 X 22 | |
| E 77 | 4670.059 | 1 | 1 | | guarnizione in rame d.10 | copper gasket diam.10 | |
| E 78 | 2175.046 | 1 | 1 | | cartuccia comb. | fuel filter cartridge | |
| E 79 | 4670.061 | 1 | 1 | | guarnizione in rame d.14 | copper gasket diam.14 | |
| E 80 | 9374.036 | 1 | 1 | | tubo pm.al.-ft. (mm 360) | fuel hose mm 360 | |
| E 81 | 1901.032 | 1 | 1 | | bullone raccordo M 14 | union bolt M 14 | |
| E 85 | 6578.200 | 3 | 3 | | pompante Stanadyne | inject.plunger Stanadyne | |
| E 86 | 7200.167 | 1 | 1 | | puntalino | drive rod | |
| E 87 | 4580.001 | 3 | 3 | | guarnizione 0,10 | gasket 0,10 | |
| E 87 | 4580.008 | 3 | 3 | | guarnizione 0,50 | gasket 0,50 | |
| E 87 | 4580.012 | 3 | 3 | | guarnizione 0,30 | gasket 0,30 | |
| E 87 | 4580.039 | 3 | 3 | | guarnizione 0,05 | gasket 0,05 | |
| E 92 | 2655.032 | 1 | 1 | | coperchio | cover | |
| E 95 | 1901.030 | 1 | 1 | | bullone raccordo M 10 | union bolt M 10 | |
| E 96 | 4670.059 | 2 | 2 | | guarnizione in rame d.10 | copper gasket diam.10 | |
| E 97 | 6585.096 | 1 | 1 | | pompa alimentazione | feed pump | |
| E 98 | 4670.059 | 1 | 1 | | guarnizione in rame d.10 | copper gasket diam.10 | |
| E 99 | 1901.030 | 1 | 1 | | bullone raccordo M 10 | union bolt M 10 | |
| E100 | 6780.070 | 2 | 2 | | prigioniero M 8 X 30 (42) | stud M 8 X 30 (42) | |
| E101 | 3240.164 | 2 | 2 | | Dado M 8 flangiato | nut M 8 | |
| E105 | 1770.042 | 1 | 1 | | bullone M 8 X 1,25 X 10 | bolt M 8 X 1,25 X 10 | |

segue in E/3
continues into E/3

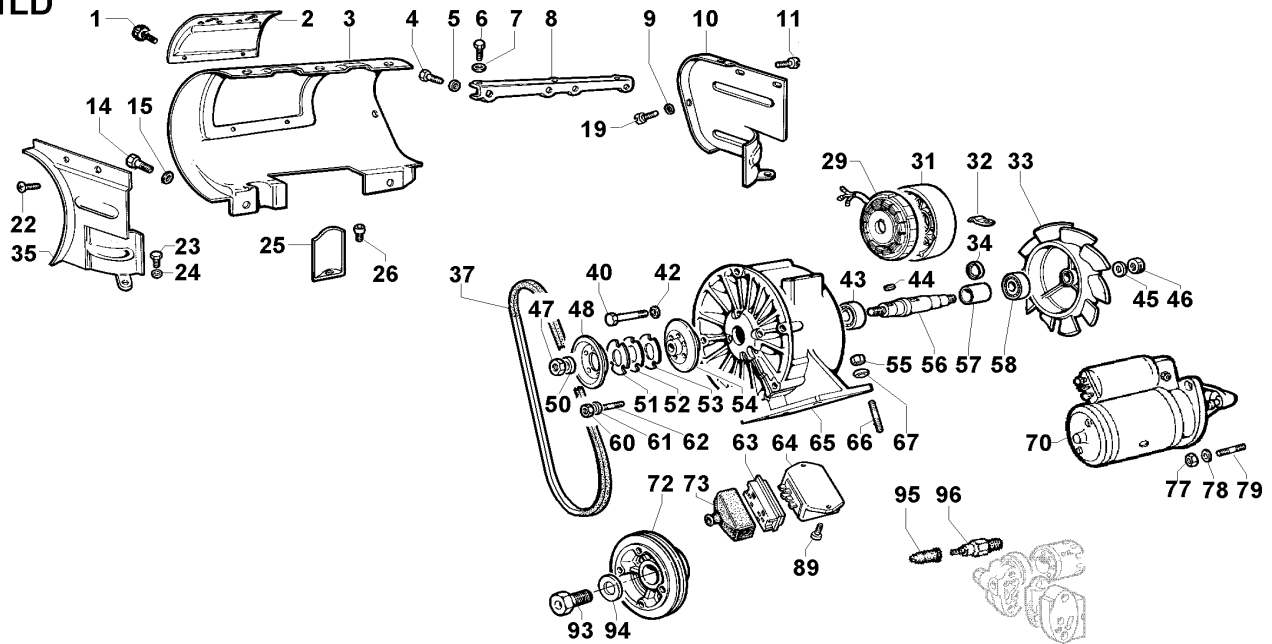
E

11LD



| Versione Version | | K 2A50C1 | K 2A55C1 | Motore/Engine 11LD 626-3 | | |
|---------------------|-------------------|--------------|-----------------------------------|---------------------------------|--------------------------|--|
| Pos. | Matricola Code | Q.tà Q.ty | Descrizione | Description | Modifiche Improvement | |
| E106 | 7565.007 | 1 1 | rondella diam. 8 | washer diam. 8 | | |
| E107 | 3617.088 | 1 1 | fascetta | clamp | | |
| E145 | 9730.018 | 3 3 | vite M 6 X 45 | screw M 6 X 45 | | |
| E146 | 8400.139 | 3 3 | spina 5 x 29,8 | lockpin 5 x 29,8 | | |
| E147 | 8545.793 | 3 3 | staffa iniettores | bracket | | |
| E148 | 6615.104 | 3 3 | portapoverizzatore (EPA-CE 97/98) | nozzle-holder (EPA-CE 97/98) | | |
| E149 | 6531.507 | 3 3 | polverizzatore (EPA-CE 97/98) | nozzle (EPA-CE 97/98) | | |
| E150 | 4670.107 | 3 3 | guarnizione in rame 0,50 | copper gasket 0,50 | | |
| E150 | 4670.108 | 3 3 | guarnizione in rame 1,00 | copper gasket 1,00 | | |
| E150 | 4670.109 | 3 3 | guarnizione in rame 1,50 | copper gasket 1,50 | | |
| E150 | 4670.110 | 3 3 | guarnizione in rame 2,00 | copper gasket 2,00 | | |
| E150 | 4670.111 | 3 3 | guarnizione in rame 2,50 | copper gasket 2,50 | | |
| E152 | 3630.050 | 3 3 | fascetta clic d. 9-11 | clamp Oteco clic 55 | | |
| E153 | 7270.104 | 1 1 | raccordo d.10 | banjo union diam.10 | | |

**F
11LD**



| | | | |
|---------------------|----------------------|--|---------------------------------|
| Versione Version | K 2A50C1 K 2A55C1 | | Motore/Engine 11LD 626-3 |
|---------------------|----------------------|--|---------------------------------|

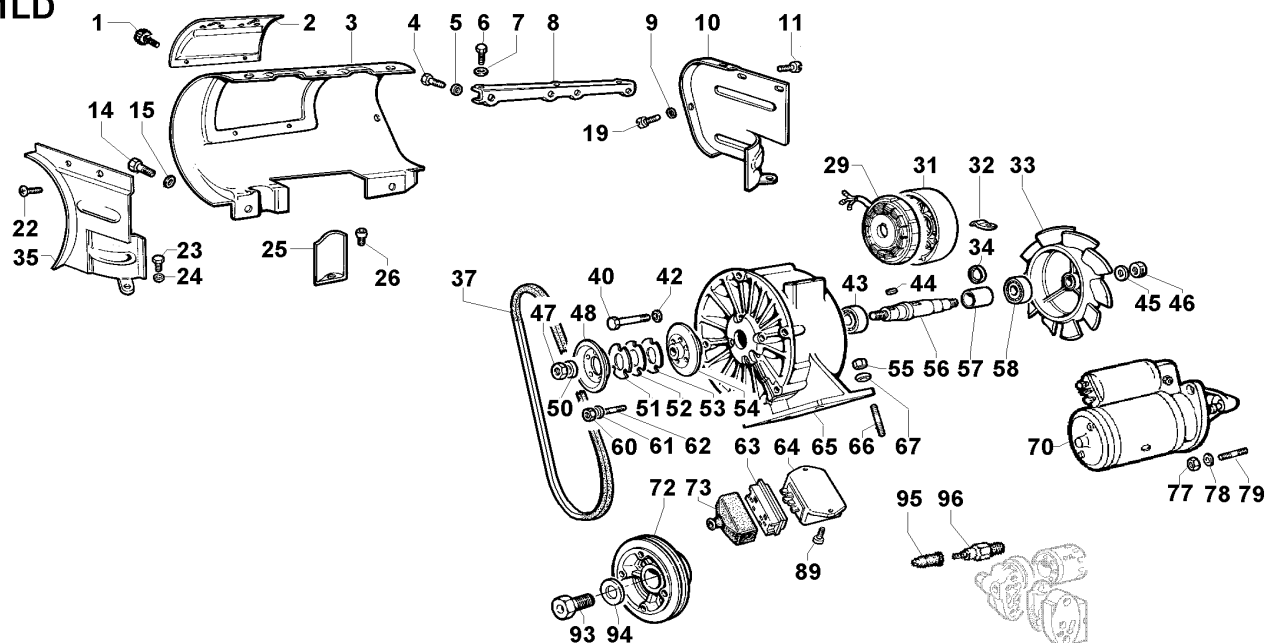
| Pos. | Matricola Code | Q.tà Q.ty | Descrizione | Description | Modifiche Improvement |
|------|-------------------|--------------|------------------------------|-------------------------------------|--------------------------|
| F 1 | 9895.055 | 2 2 | volantino | pivot | |
| F 2 | 6660.028 | 1 1 | portina | pan | |
| F 3 | 2569.372 | 1 1 | convogliatore | shroud | |
| F 4 | 1760.032 | 4 4 | bullone M 6 X 1 X 14 | bolt M 6 X 1 X 14 | |
| F 5 | 7625.062 | 4 4 | rondella diam. 6,5 | washer diam. 6,5 | |
| F 6 | 1770.056 | 3 3 | bullone M 8 X 1,25 X 18 | bolt M 8 X 1,25 X 18 | |
| F 7 | 7625.012 | 3 3 | rondella diam. 8,4 | washer diam. 8,4 | |
| F 8 | 5066.061 | 1 1 | lamiera | airtight plate | |
| F 9 | 7625.062 | 2 2 | rondella diam. 6,5 | washer diam. 6,5 | |
| F 10 | 5066.055 | 1 1 | lamiera | airtight plate | |
| F 11 | 9790.039 | 2 2 | vite M 6 X 12 | screw M 6 X 12 | |
| F 14 | 1770.056 | 2 2 | bullone M 8 X 1,25 X 18 | bolt M 8 X 1,25 X 18 | |
| F 15 | 7625.012 | 2 2 | rondella diam. 8,4 | washer diam. 8,4 | |
| F 19 | 9790.039 | 2 2 | vite M 6 X 12 | screw M 6 X 12 | |
| F 22 | 9790.047 | 2 2 | vite M 6 X 16 | screw M 6 X 16 | |
| F 23 | 1770.002 | 2 2 | bullone M 8 X 1,25 X 16 | bolt M 8 X 1,25 X 16 | |
| F 24 | 7625.012 | 2 2 | rondella diam. 8,4 | washer diam. 8,4 | |
| F 25 | 3350.077 | 2 2 | deflettore | deflector | |
| F 26 | 9731.092 | 2 2 | vite M 8 X 14 | screw M 8 X 14 | |
| F 29 | 1157.159 | 1 1 | alternatore 12V 21A - 3 fili | volt.alternator 12V 21A - 3 wires | |
| F 31 | 2086.051 | 1 1 | campana per altern. 14A | bell for blower with 14A alternator | |
| F 32 | 3617.024 | 1 1 | fascetta | clamp | |
| F 33 | 9718.108 | 1 1 | ventola | blower | |
| F 34 | 3450.051 | 1 1 | distanziale | spacer | |
| F 35 | 5066.056 | 1 1 | lamiera | panel | |
| F 37 | 2440.358 | 1 1 | cinghia mm 800 | belt mm 800 | |
| F 40 | 1760.084 | 4 4 | bullone M 6 X 1 X 75 | bolt M 6 X 1 X 75 | |

segue in F/2
continues into F/2

**RAFFREDDAMENTO
AVVIAMENTO
PARTI ELETTRICHE**

**COOLING SYSTEM
STARTING
ELECTRICAL EQUIPMENT**

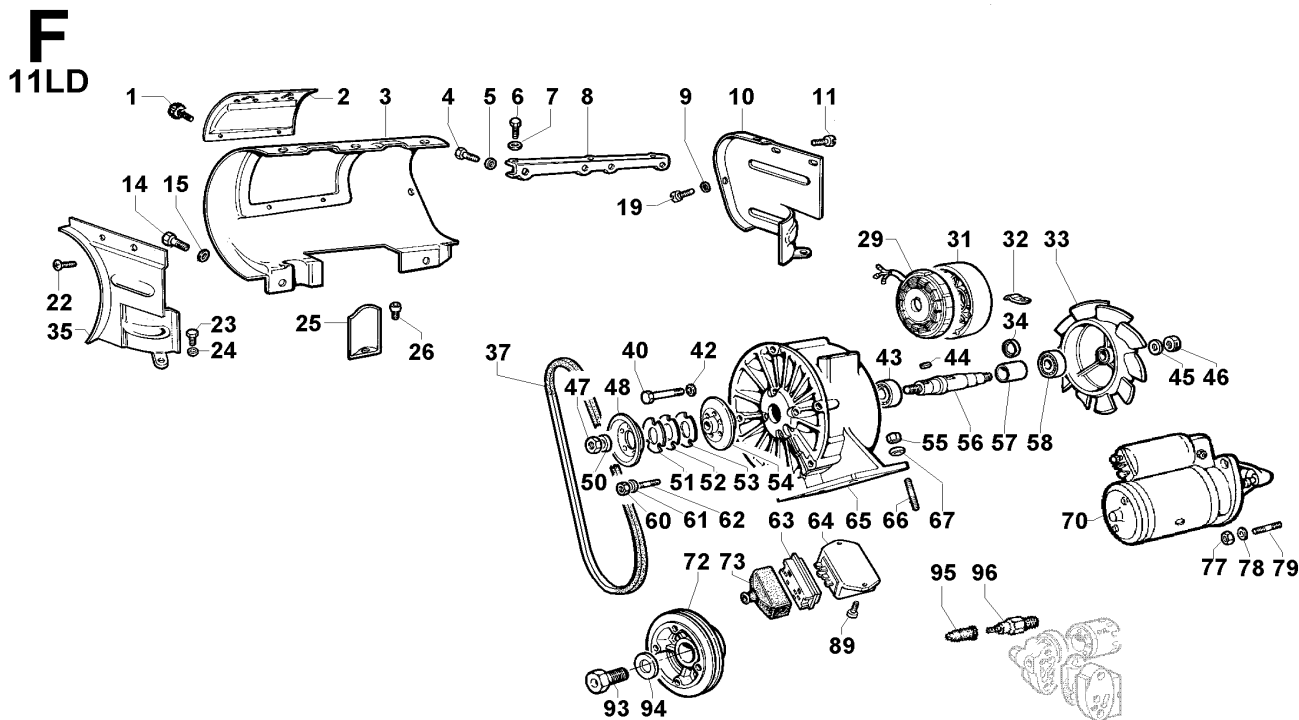
**F
11LD**



| Pos. | Matricola Code | Q.tà Q.ty | Descrizione | Description | Modifiche Improvement |
|---------------------|----------------|----------------------|---|--|--------------------------|
| Versione Version | | K 2A50C1 K 2A55C1 | Motore/Engine 11LD 626-3 | | |
| F 42 | 7625.007 | 4 4 | rondella diam. 6 | washer diam. 6 | |
| F 43 | 3003.052 | 1 1 | cuscinetto | ball bearing | |
| F 44 | 2200.004 | 1 1 | chiavetta | key | |
| F 45 | 7625.055 | 1 1 | rondella diam. 12,5 | washer diam.12,5 | |
| F 46 | 3203.015 | 1 1 | dado | nut | |
| F 47 | 3203.015 | 1 1 | dado | nut | |
| F 48 | 6975.134 | 1 1 | PULEGGIA diam 86 (Giri/min>2000) Pos. 48-50-51-52-53-60-61-62 | PULLEY diam 86 (R.P.M.>2000) | |
| F 50 | 7625.055 | 1 1 | rondella diam. 12,5 | washer diam.12,5 | |
| F 51 | 6320.034 | 1 1 | piastrina 2,00 diam. 53 (Giri/min>2000) | plate 2,00 diam. 53 (R.P.M.>2000) | |
| F 52 | 6320.035 | 1 1 | piastrina 1,00 diam. 53 (Giri/min>2000) | plate 1,00 diam. 53 (R.P.M.>2000) | |
| F 53 | 6320.036 | 1 1 | piastrina 0,50 diam. 53 (Giri/min>2000) | plate 0,50 diam. 53 (R.P.M.>2000) | |
| F 54 | «———» | | semipuleggia - vedi Pos. F 48 | half-pulley - see Pos. F 48 | |
| F 55 | 3240.018 | 4 4 | dado M 8 | nut M 8 | |
| F 56 | 1105.017 | 1 1 | albero ventola | blower shaft | |
| F 57 | 3450.051 | 1 1 | distanziale per altern.21A | spacer (for blower with 21A alternator) | |
| F 58 | 3002.032 | 1 1 | cuscinetto | ball bearing | |
| F 60 | 3240.008 | 3 3 | dado M 6 | nut M 6 | |
| F 61 | 7565.004 | 3 3 | rondella diam. 6 | washer diam. 6 | |
| F 62 | 6760.047 | 3 3 | prigioniero M 6 X 16 | stud M 6 X 16 | |
| F 63 | 6740.153 | 1 1 | presa regol. Saprisa | inlet regul.Saprisa | |
| F 64 | 7362.294 | 1 1 | regolatore tens. 12V 21A predisposto contagiri elettronico-6+W contatti per alt. 3 fili | volt.regulator 12V 21A fitted for electronic tachometer - 6+W contact for 3 wires alternator | |

segue in F/3
continues into F/3

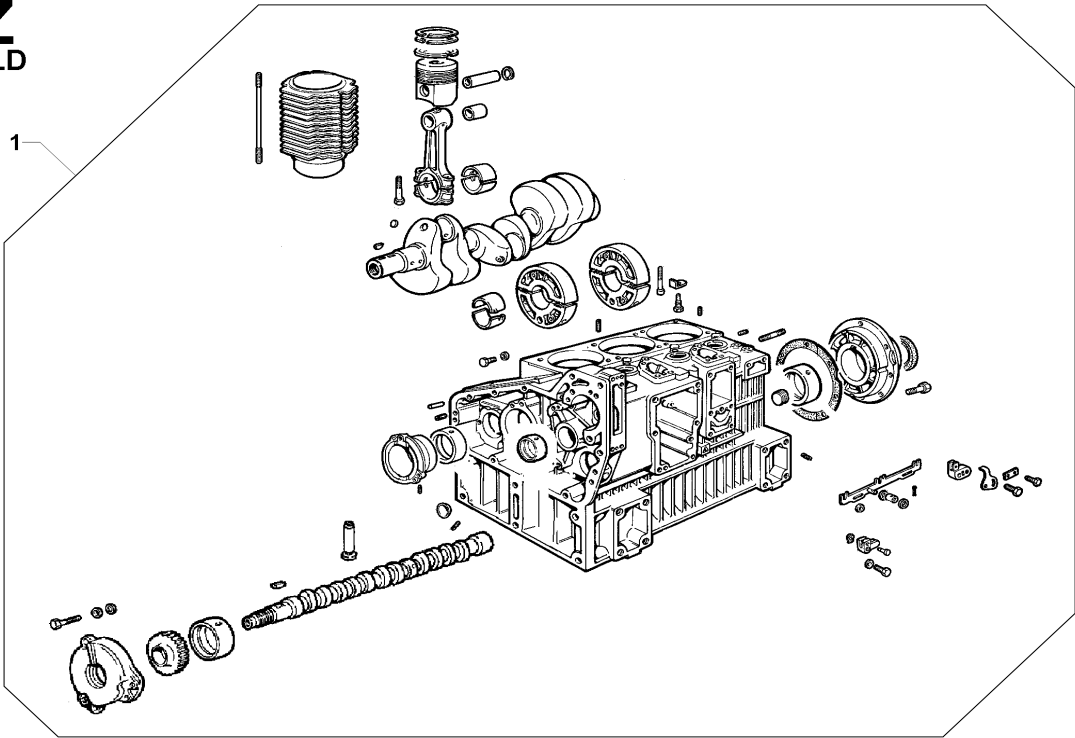
| | |
|-------------------------|-----------------------------|
| RAFFREDDAMENTO | COOLING SYSTEM |
| AVVIAMENTO | STARTING |
| PARTI ELETTRICHE | ELECTRICAL EQUIPMENT |



| | | |
|---------------------|----------------------|---------------------------------|
| Versione Version | K 2A50C1 K 2A55C1 | Motore/Engine 11LD 626-3 |
|---------------------|----------------------|---------------------------------|

| Pos. | Matricola Code | Q.tà Q.ty | Descrizione | Description | Modifiche Improvement |
|------|-------------------|--------------|--|---------------------------------------|--------------------------|
| F 65 | 9718.198 | 1 1 | VENTOLA COMPL. con altern.21A Pos. 29-31-33-40-42-43-44-45-46-47-50-56-57-58-65 | FAN ASS.Y with 21A voltage alternator | |
| F 65 | 8565.050 | 1 1 | statore alternatore | alternator stator | |
| F 66 | 6780.008 | 4 4 | prigioniero M 8 X 20 (32) | stud M 8 X 20 (32) | |
| F 67 | 7565.007 | 4 4 | rondella diam. 8 | washer diam. 8 | |
| F 70 | 5840.067 | 1 1 | mot.avv. HP 2,5 Bosch | starting motor HP 2,5 Bosch | |
| F 72 | 6975.115 | 1 1 | puleggia diam. 142 (Giri/min>2000) | pulley diam. 142 (R.P.M.>2000) | |
| F 73 | 2145.014 | 1 1 | cappuccio regolatore | regulator cap | |
| F 77 | 3240.048 | 2 2 | dado | nut | |
| F 78 | 7565.013 | 2 2 | rondella diam. 12 | washer diam.12 | |
| F 79 | 6820.014 | 2 2 | prigioniero M 12 X 30 (48) | stud M 12 X 30 (48) | |
| F 89 | 9732.074 | 2 2 | vite M 8 X 20 | screw M 8 X 20 | |
| F 93 | 1805.025 | 1 1 | bullone | bolt | |
| F 94 | 7625.265 | 1 1 | rondella | washer | |
| F 95 | 6491.013 | 1 1 | pipetta | pipe elbow | |
| F 96 | 6745.050 | 1 1 | pressostato 0,3 bar (M 12) | oil switch 0,3 bar (M 12) | |

Z
11LD



| | | | |
|---------------------|----------------------|--|---------------------------------|
| Versione Version | K 2A50C1 K 2A55C1 | | Motore/Engine 11LD 626-3 |
|---------------------|----------------------|--|---------------------------------|

| Pos. | Matricola Code | Q.tà Q.ty | Descrizione | Description | Modifiche Improvement |
|------|-------------------|--------------|---------------|-------------|--------------------------|
| Z 1 | 1560.208 | 1 1 | blocco motore | short block | |