

itma coop s.r.l.

40016 SAN GIORGIO DI PIANO (Bologna)

Telefono (051) 89 72 74

M 135134

C. C. I. A. A. Bologna 222331

Iscritta al N. 21299 Reg. Società del Tribunale di Bologna



Industria Trattori Macchine Agricole
e Industriali

A 35

INDICE INDEX INDICE INDICE

ITMA A35

TAVOLA table table cuadro	GRUPPO unit groupe grupo	SOTTOGRUPPO sub-unit sous-groupe subgrupo
1	210 - FRIZIONE - clutch - embrayage - embrague	211 - SPINGIDISCO - c.pressure plate - anneau de pression - excitacion disco
2	220 - CAMBIO - gearbox - changement de vitesse - cambio	221 - SCATOLA E CAMPANA - tractor body and bell connection - boîte et raccordements - caja y campana
3	220 - CAMBIO - gearbox - changement de vitesse - cambio	222 - ALBERO FRIZIONE - clutch shaft - arbre embrayage - eje embrague
4	220 - CAMBIO - gearbox - changement de vitesse - cambio	223 - ALBERO PRIMARIO - driving shaft - arbre principal - eje primario
5	220 - CAMBIO - gearbox - changement de vitesse - cambio	224 - ALBERO SECONDARIO - driven shaft - arbre secondaire - eje secundario
6	220 - CAMBIO - gearbox - changement de vitesse - cambio	225 - ALBERO R.M. - reverse gear shaft - arbre marche arriere - eje R.M.
7	220 - CAMBIO - gearbox - changement de vitesse - cambio	226 - ASTE E FORCELLE - rods and dorks - leviers et fourchettes - barra y horquillas
8	220 - CAMBIO - gearbox - changement de vitesse - cambio	227 - COMANDI CAMBIO - gearbox controls - comm.changement de vitesse - mandos cambio
9	220 - CAMBIO - gearbox - changement de vitesse - cambio	228 - COMANDI RIDUTTORE - reducer controls - comm.reducteur - mandos reductor
10	230 - PONTE POSTERIORE - rear casing - pont arriere - puente post.	231 - RIDUTTORE CENTRALE - bevel gears - reducteur central - reductor central
11	230 - PONTE POSTERIORE - rear casing - pont arriere - puente post.	232 - FRIZIONI LATERALI - steering clutche - embrayages lateraux - embragues laterales
12	230 - PONTE POSTERIORE - rear casing - pont arriere - puente post.	233 - SCATOLE RIDUTTORE 'S'e'N' - reducer boxes - boites reducteur - cajas reductor
13	230 - PONTE POSTERIORE - rear casing - pont arriere - puente post.	233 - SCATOLE RIDUTTORE 'L' - reducer boxes - boites reducteur - cajas reductor
14	230 - PONTE POSTERIORE - rear casing - pont arriere - puente posterior	234 - RUOTISMI RIDUTTORE - reducer gears - rouages reducteur - mecanismos rodacion reductor
15	240 - PRESA DI FORZA - P.I.O. - prise de force - enchufe de fuerza	241 - RUOTISMI - gears - rouages - mecanismos rodacion

TRASMISSIONE
transmission
transmission
transmission

CAMBIA SOLLENITARE DALLA

DA MATR. 300.35.

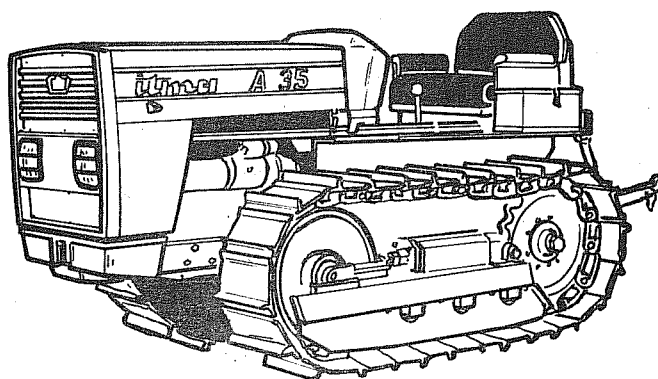
MAT. 933.35 tipo SAFER A35

ORGANI DI COMANDO control organs pièces de controle organos sz mando			
13	310 - FRENI - brakes - freins - frenos	311 - FRENO A NASTRO - hand brake - frein a bande - freno de cinta	312 - COM. A PEDALE - pedal control - comm.a pedale - mando a pedal
14	320 - STERZO - steering - direction - guida	321 - LEVE STERZO - levers - leviers direction - palancas de guida	313 - COM. A MANO - hand control - comm.manuelle - mandos a ma.
15	320 - STERZO - steering - direction - guida	322 - POMPE - disengaging pump - pompes - bombas	323 - MARTINETTO - jack - verin - gato
			324 - FORCELLA - fork - fourchette - horquilla

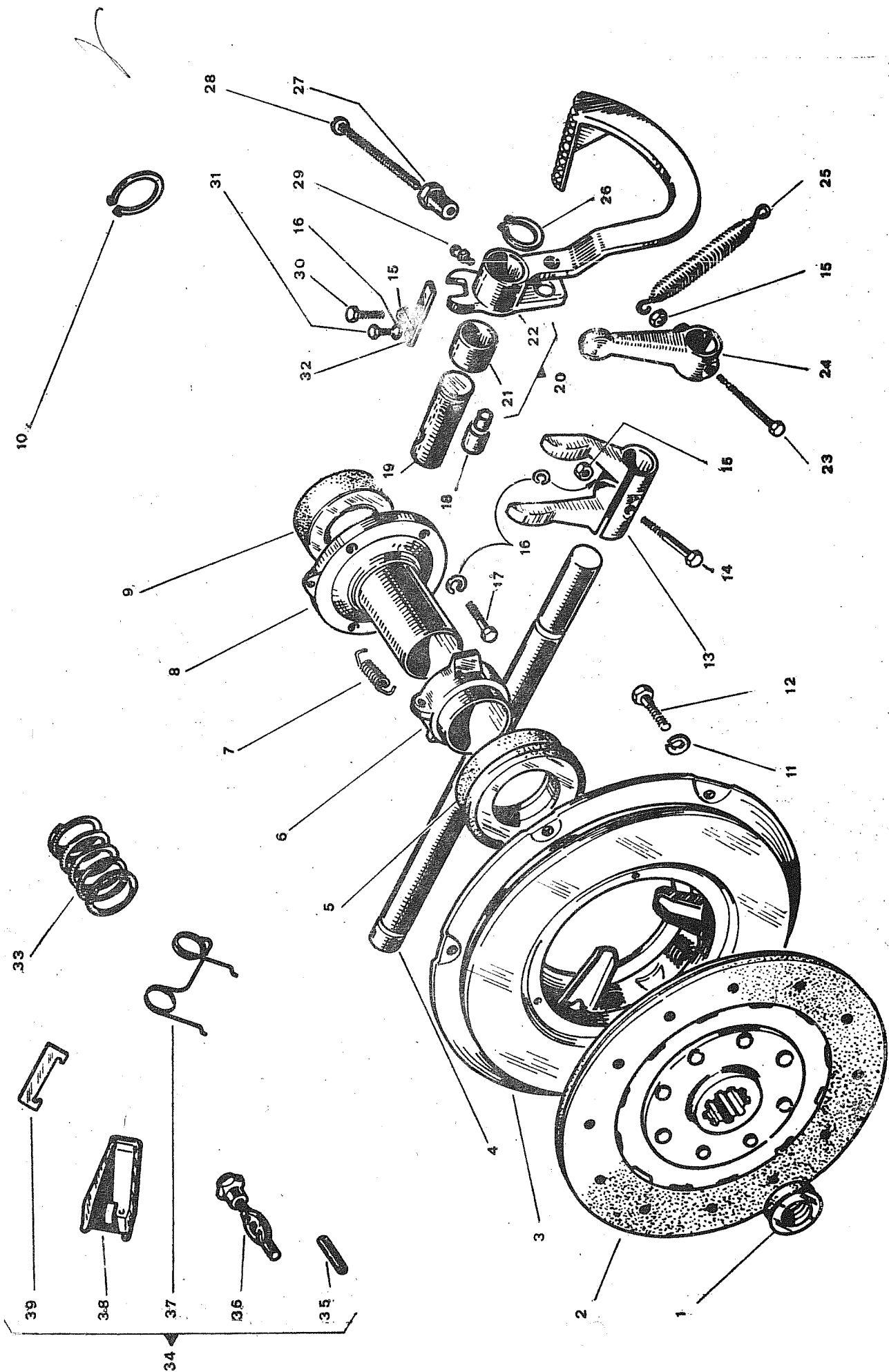
	TAVOLA table table cuadro	GRUPPO unit groupe grupo	SOTTOGRUPPO sub-unit sous-groupe subgrupo	
SOSPENSIONE E PROPULSIONE suspension and propulsion suspension et propulsion suspension y propulsion.	16	410 - SOSPENSIONE - suspension - suspension - suspension	411 - SOSPENSIONE ANTERIORE - front suspension - suspension avant - suspension anterior	
	17	420 - CINGOLATURA - tracks - chenilles - cadenas	421 - CARRELLI - track frames - chariots - volquetes	
	18	420 - CINGOLATURA - tracks - chenilles - cadenas	422 - RULLI INFERIORI - lower rollers - rouleaux inferieus - rodillos inferiores	423 - RULLI SUPERIORI - upper rollers - rouleaux superieurs - rodillos superiores
	19	420 - CINGOLATURA - tracks - chenilles - cadenas	424 - GRUPPO TENDICINGOLO - tracks stretcher - groupe tendeurde chenille - grupo estiracadena	
	20	420 - CINGOLATURA - tracks - chenilles - cadenas	425 - RUOTA TENDICINGOLO - idler wheel - roue tendeur de chenille - rueda estiendecadena	
	21	420 - CINGOLATURA - tracks - chenilles - cadenas	426 - RUOTA MOTRICE - driving wheel - roue motrice - rueda motriz	427 - CATENARIA - chain - chaines - catenaria

ORGANI COMPLEMENTARI complementary organs pieces complementaires organos complementarios	22	510 - ALIMENTAZIONE SCARICO - feeding exhaust - alimentation et echapp. - alimentation descarga	511-IMP.COMBUSTIBILE -fuel plant -install.carburant -instalacion comb.	512-ASPIRAZIONE -suction -aspiration -aspiration	513 - SCARICO - exhaust - echappement - descarga
	23	520 - IMPIANTO ELETTRICO - electric plant - installation electrique - instalacion electrica	521-AVVIAMENTO -starting -demarrage -puesta en marcha	522-GENERATORE -generator -generateur -generator	523-ILLUMINAZIONE -lighting -eclairage -iluminacion
	24	530 - CARROZZERIA - bodywork - carrosserie - carroceria	531 - COFANO CRUSCOTTO - engine hood - capot tableau de bord - camara cuadro	532 - PARAFANGO SEDILE - mudguard seat - garde boue et siege - parafrenos	

ORGANI ACCESSORI accessory organs pieces accessoires organos accesorios	25	610 - TRAINO - hook - remorquage - recogedor	611 - BARRA DI TRAINO - draw bar - barre de remorquage - barra de recogedpr	
	26	620 - SOLLEVATORE - hydraulic lifter - elevateur - elevador	621 - POMPA E TUBAZIONI - pump and pipes - pompe et uyau - bomba y tuberias	622 - STAZIONE SOLLEVAMENTO - hydraulic lifter - station de relevage - estacion alzamiento
	27	630 - ATTACCO A TRE PUNTI - three-point linkage - fixation a trois points - connexion a tres puntos		
	28	620 - SOLLEVATORE - hydraulic lifter - elevateur - elevador	623 - PARTICOLARI STAZIONE SOLLEVAMENTO - lifter parts - elements station relevage - particulares estacion de alzamiento	



PARTI DI RICAMBIO
SPARE PARTS
PIÈCES DÉTACHÉES
PIEZAS DE REPUESTO



FATTO X

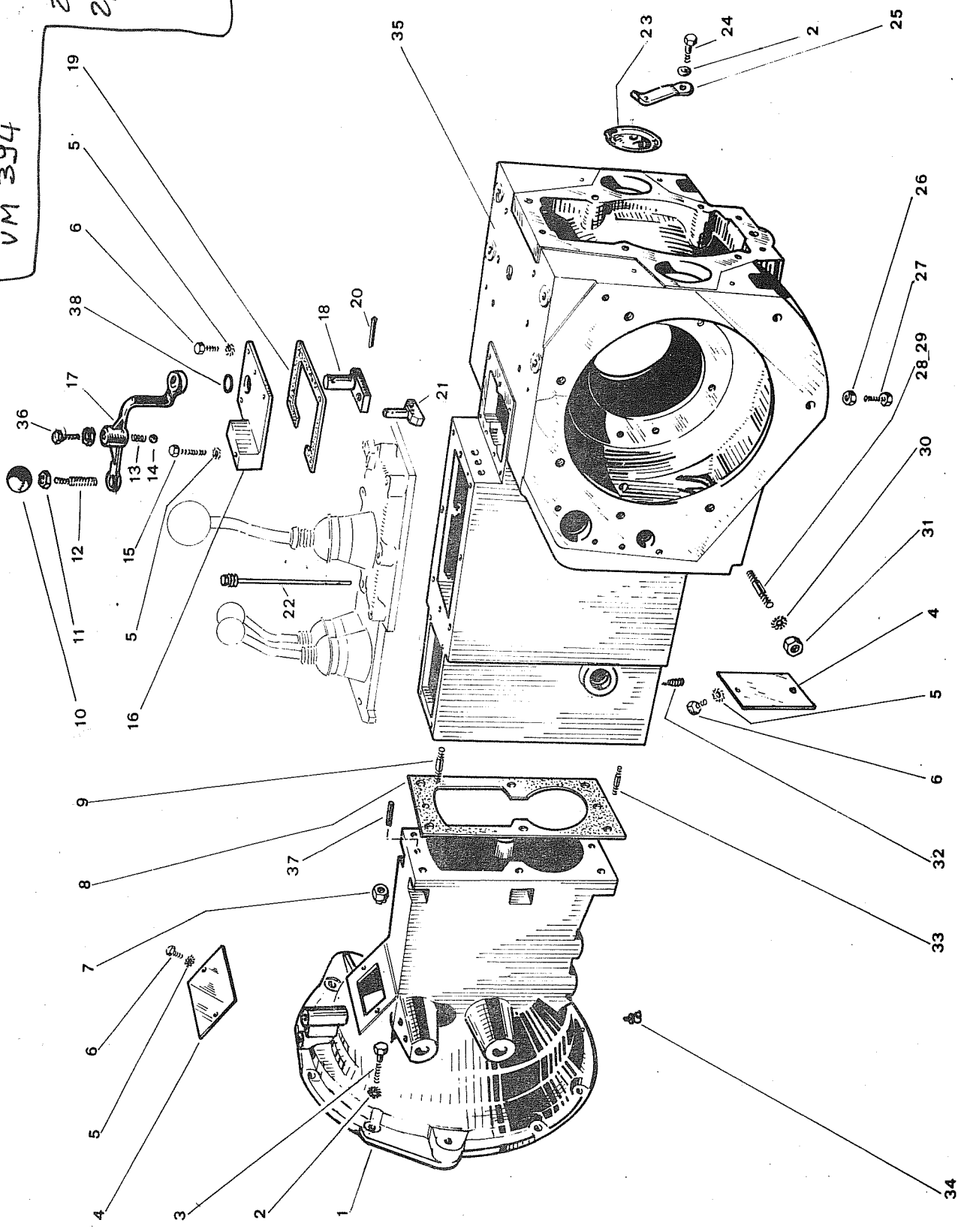
Gruppo	210 - FRIZIONE - CLUTCH	ITMA A 35
Sgr.	211 - SPINGIDISCO - COMPLETE PRESSURE	
	212 - COMANDO - CONTROLS	TAV. 1
		102.011.01 1979

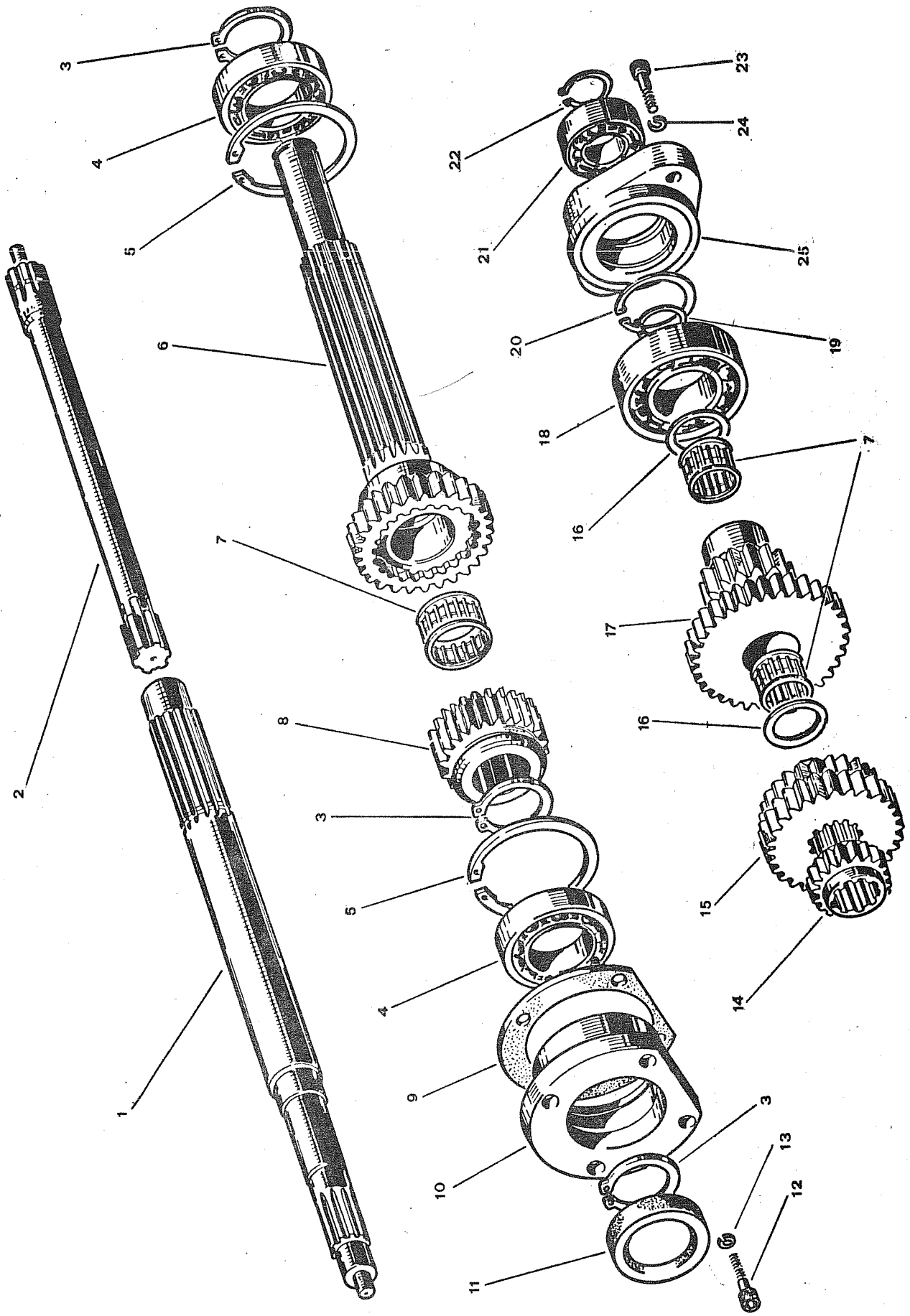
FIG.	RIFERIMENTO	MODIF.	DENOMINAZIONE	DENOMINATION	Q	
1	12.0090	✓	Cuscinetto 6201-2RS	Bearing	1	620 0242
2	102.56.0591	✓	Disco	Clutch driven plate	1	660 774
3	102.56.0626	✓	Frizione	Clutch	1	651 375
4	102.06.1478	✓	Asse	Rod	1	651 171
5	102.56.0723	✓	Cuscinetto	Bearing	1	660 775
6	102.01.3549	✓	Manicotto	Sleeve	1	651 144
7	100.18.0301	✓	Molla	Spring	1	660 163
8	102.48.0241	✓	Supporto	Sleeve support	1	
9	12.0103	✓	Cuscinetto	Bearing	1	620 0085
10	14.0004	✓	Anello elastico	Elastic ring	2	6240 0106
11	24.0002	✓	Rosetta elastica	Spring washer	6	620 387
12	19.0019	✓	Vite	Screw	6	610 0020
13	100.02.011	✓	Forcella	Clevis	1	660 093
14	19.0130	✓	Vite	Screw	1	
15	19.0003	✓	Dado	Nut	3	61200 48
16	24.0002	✓	Rosetta elastica	Spring washer	5	620 387
17	19.0007	✓	Vite	Screw	4	610 0021
18	102.06.1483	✓	Perno	Pin	1	660 581
19	102.06.3460	✓	Asse	Rod	1	660 595
20	102.48.0112	✓	Pedale C	Pedal with bush	1	660 764
21	102.16.1016	✓	Boccola	Bush	1	660 692
22	102.02.1480	✓	Pedale	Pedal	1	660 559
23	100.19.0155	✓	Vite	Screw	1	660 175
24	102.02.1479	✓	Leva	Lever	1	660 558
25	100.18.0302	✓	Molla	Spring 660 164	1	100 18 0302 01
26	14.0002	✓	Anello elastico	Elastic ring	1	624 0050
27	102.20.1482	✓	Dado	Nut	1	660 714
28	102.19.1481	✓	Vite	Screw	1	660 708
29	15.0004	✓	Ingrassatore	Greager	1	639 0002
30	19.0033	✓	Vite	Screw	1	620 194
31	19.0040	✓	Vite	Screw	1	610 0067
32	102.08.1527	✓	Arresto	Spar	1	
33	102.49.0659	✓	Molla	Spring	12	
34	102.56.0626	✓	Serie Revisione C	Overhaul Kit	1	5000 91
35	102.49.0245	✓	Perno Se e sono	Pin	3	
36	102.49.0244	✓	Supporto Pezzi	Support	3	
37	102.49.0246	✓	Molla OK - SENO	Spring	3	
38	102.49.0242	✓	Leva INVIARE SERV	Lever	3	
39	102.49.0247	✓	Piastrina 5000 21	Spar	3	

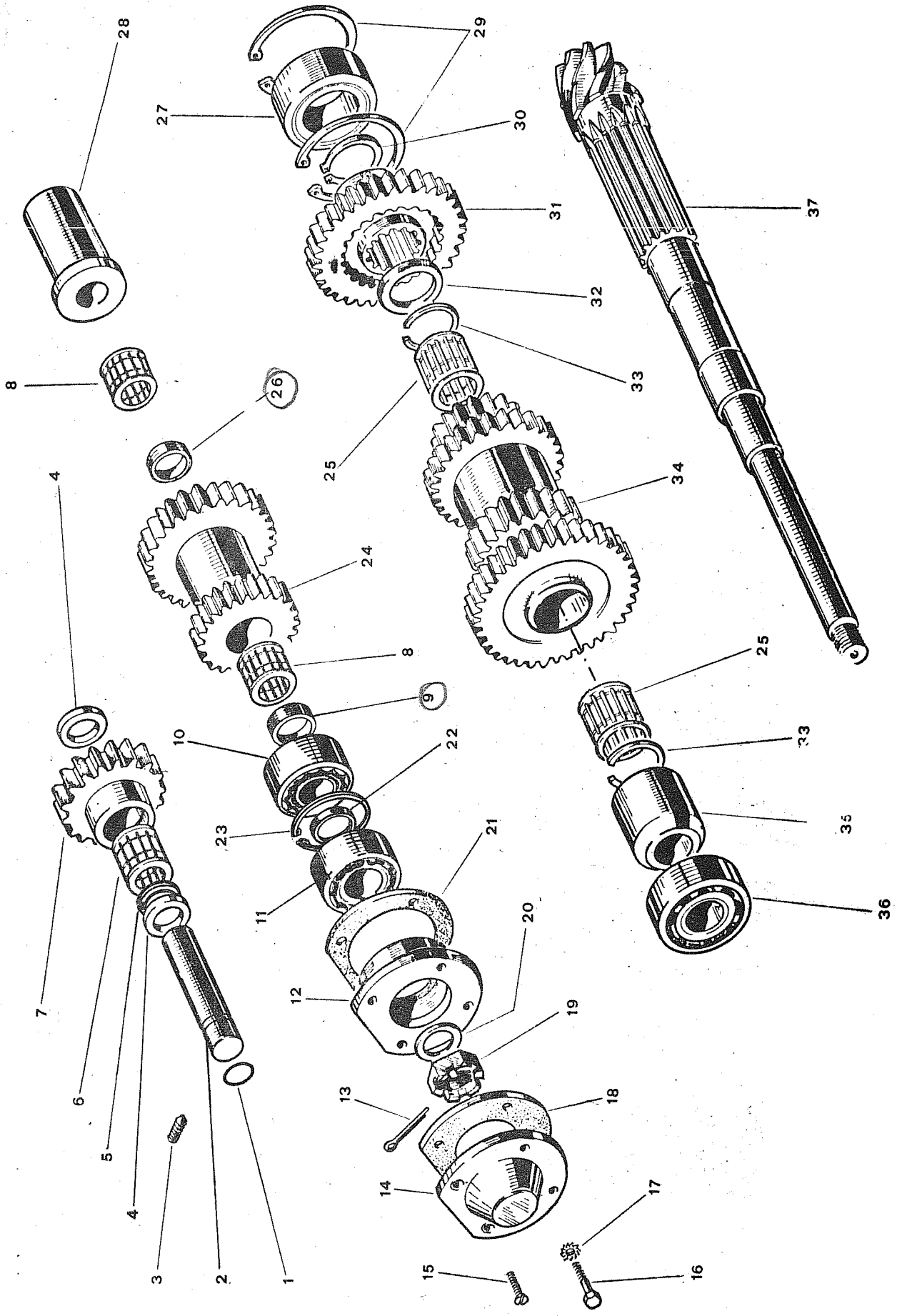
AGS

TER MONTARE IL MOTORE
VM 394

27252 VOLANTE
27253 FIANGIK
DI
COLLEGAR.





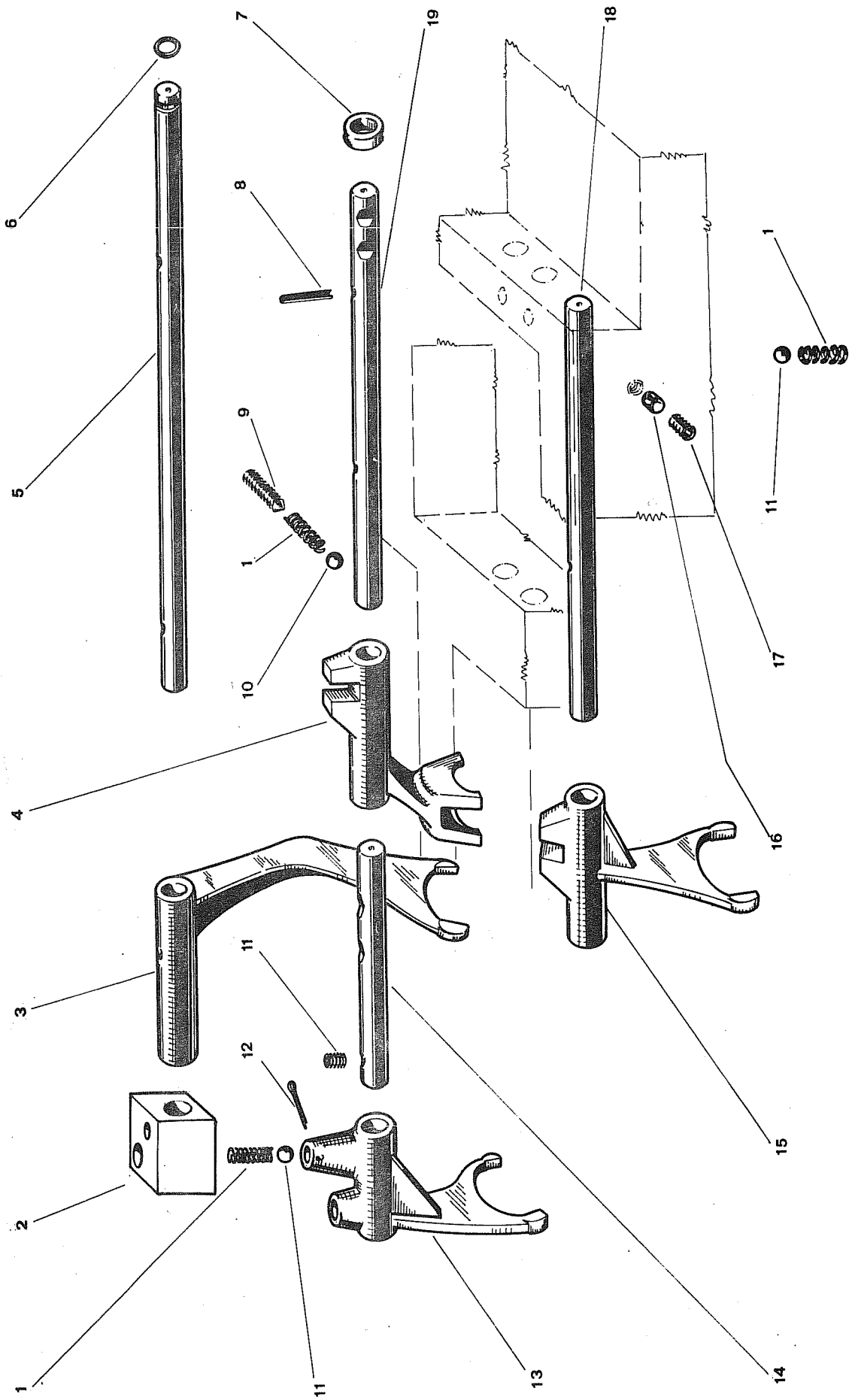


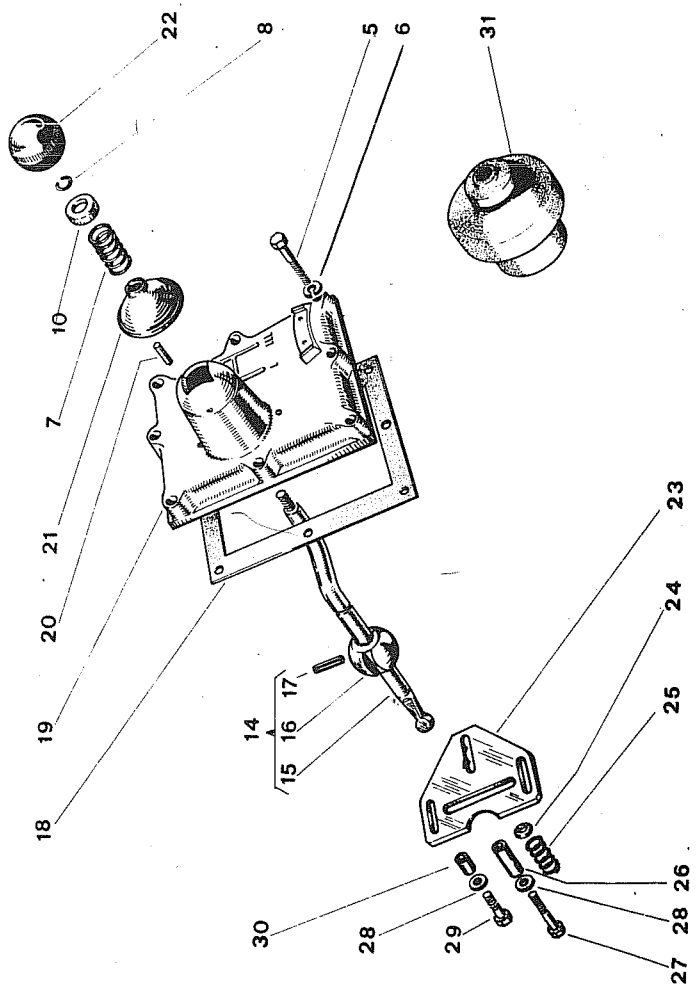
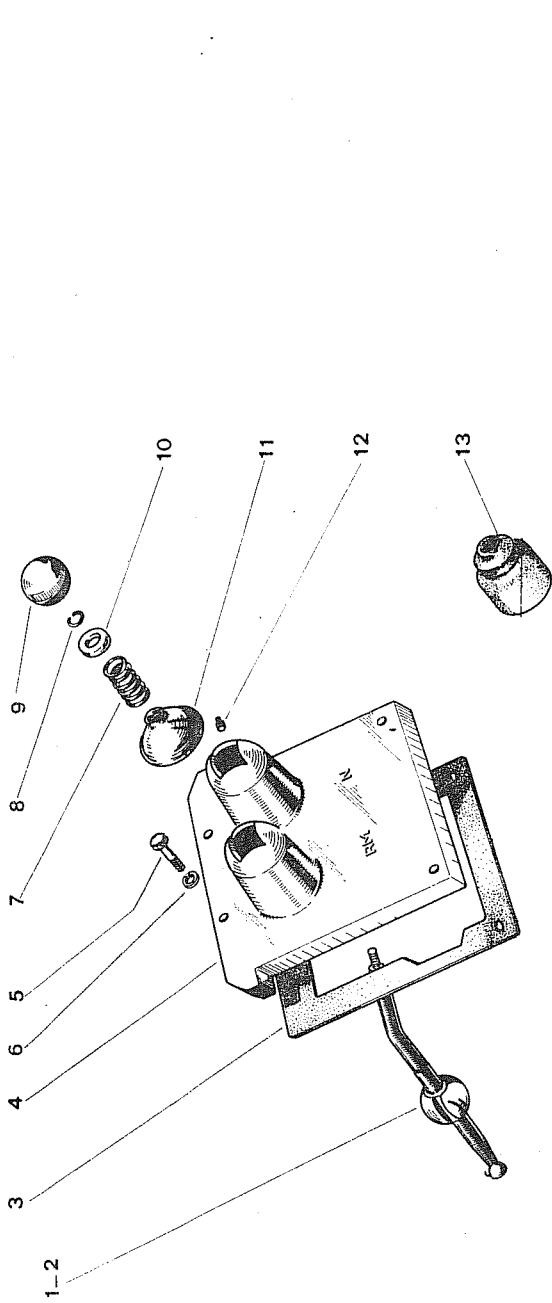
FATTO

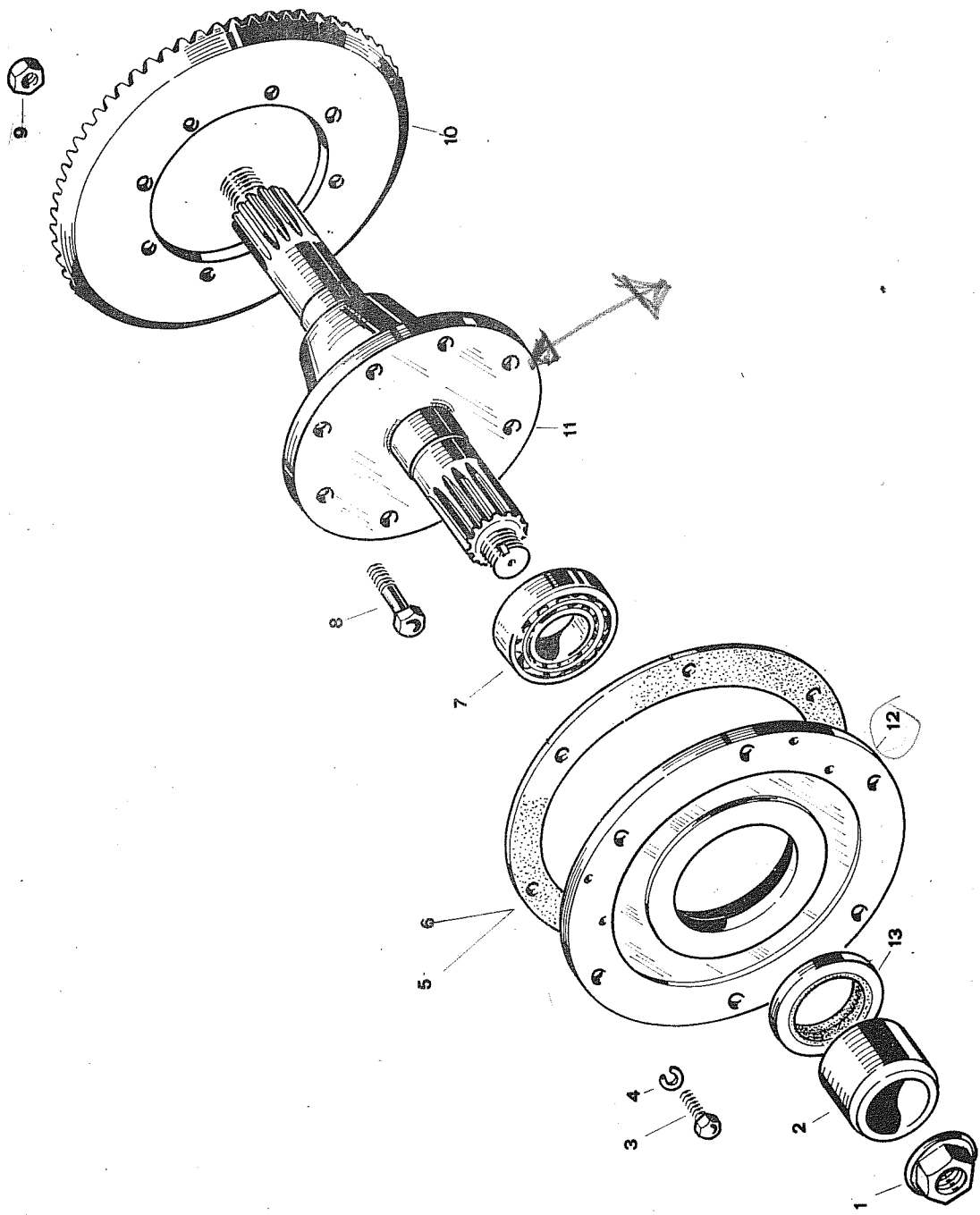
Gruppo	220 - CAMBIO - GERABOX	ITMA A 35	
	Sgr. 224 - ALBERO SECONDARIO - DRIVEN SHAFT		TAV. 4
	225 - ALBERO RETRO MARCIA - REVERSE GEAR ROD		
		102.041.01	1979

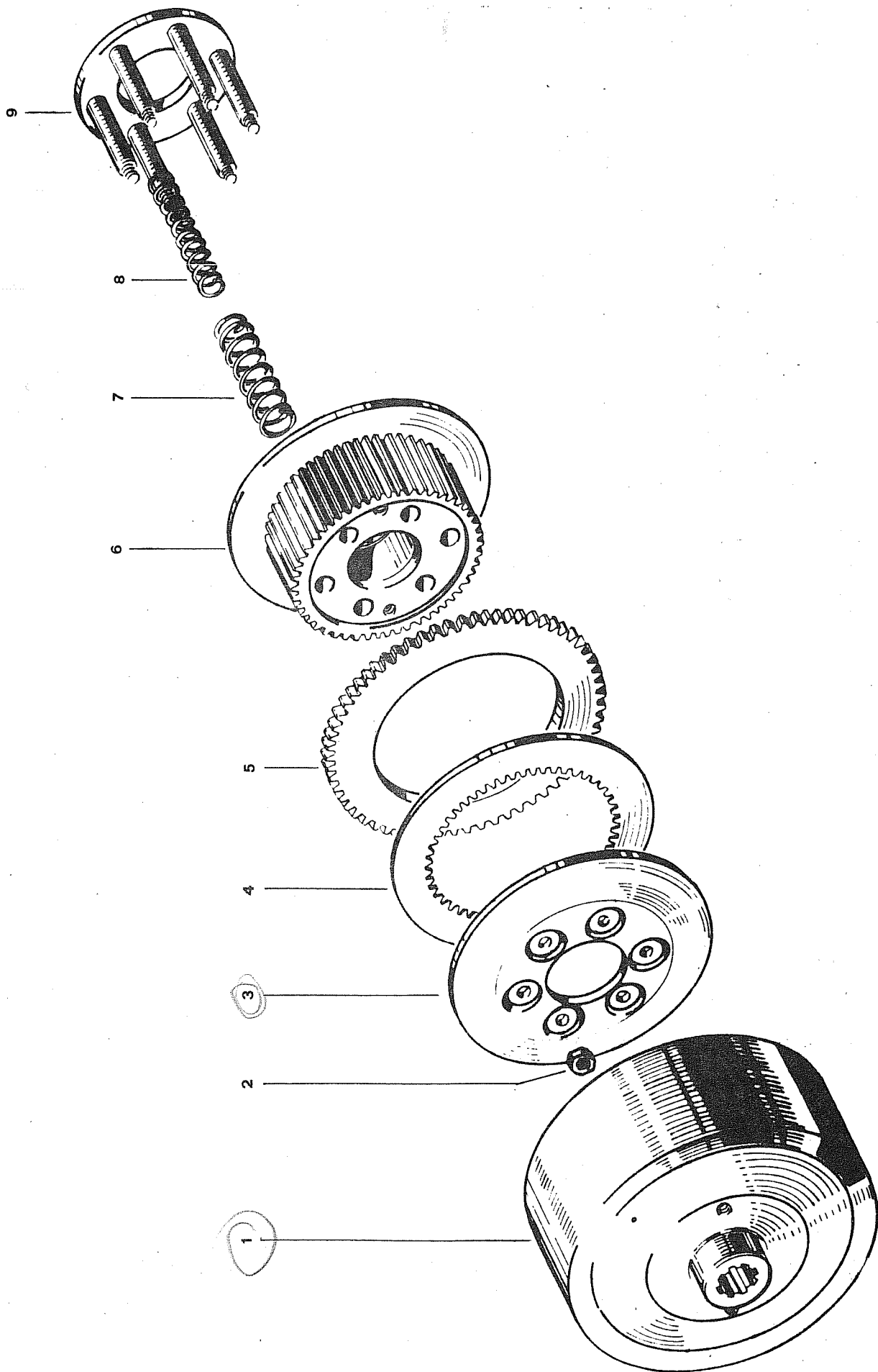
FIG.	RIFERIMENTO	MODIF.	DENOMINAZIONE	DENOMINATION	Q	
1	13.0045	✓	Anello O.R.	O-ring	1	6230027
2	100.06.0991	✓	Asse	Gear rod	1	660.115
3	19.0129	✓	Grano	Dower	1	6140025
4	100.09.0989	✓	Distanziale	Spacer	2	660137
5	12.0109	✓	Anello di fermo	Elastic ring	1	6240047
6	12.0106	✓	Gabbia a rullini	Roller casing	1	6210042
7	102.07.1497	✓	Ingranaggio RA	Gear	1	660608
8	12.0105	✓	Gabbia a Rullini	Roller casing	2+	6210082
9	102.06.3792	✓	Distanziale	Spacer	1	660597
10	12.0135	✓	Cuscinetto	Bearing	1	6200211
11	12.0018	✓	Cuscinetto	Bearing	1	6200197
12	102.01.3799	✓	Scatola	Bearing box	1	660557
13	24.0013	✓	Copiglia	Split-pin	1	6270016
14	100.01.0976	✓	Coperchio	Bearing-cover	1	660090
15	19.0214	✓	Vite	Screw	2	6150151
16	19.0146	✓	Vite	Screw	2	6110005
17	24.0004	✓	Rosetta elastica	Spring washer	2	620389
18	100.17.0977	✓	Guarnizione	Gasket	1	660161
19	19.0141	✓	Dado	Nut	1	6160131
20	24.0045	✓	Rosetta bisellata	Washer	1	6180021
21	100.17.0975	✓	Guarnizione	Gasket	1	660160
22	102.12.3793	✓	Distanziale	Spacer	1	660688
23	14.0016	✓	Anello elastico	Elastic ring	1	6240029
24	102.07.3774	✓	Ingranaggio	Gear	1	651167
25	12.0050	✓	Gabbia a rullini	Roller casing	2	6210068
26	102.12.3823	✓	Distanziale	Spacer	1	660689
27	12.0134	✓	Cuscinetto	Bearing	1	6210069
28	102.06.1490	✓	Distanziale	Spacer	1	660583
29	14.0018	✓	Anello elastico	Elastic ring	2	6240033
30	14.0004	✓	Anello elastico	Elastic ring	1	6240106
31	102.05.3790	✓	Ingranaggio	Gear	1	660577
32	100.09.0756	✓	Anello di rasamento	Washer	1	
33	12.0048	✓	Anello di fermo	Elastic ring	2	6240133
34	102.05.3789	✓	Ingranaggio	Gear	1	660612
35	102.06.0985	✓	Distanziale	Spacer	1	
36	12.0003	✓	Cuscinetto	Bearing	1	6200041
37	102.05.3791	✓	Albero	Gear rod	1	660578
	102.17.4648	✓	Senza guarnizione collino	Sost. da collino		25230 Coppia carice

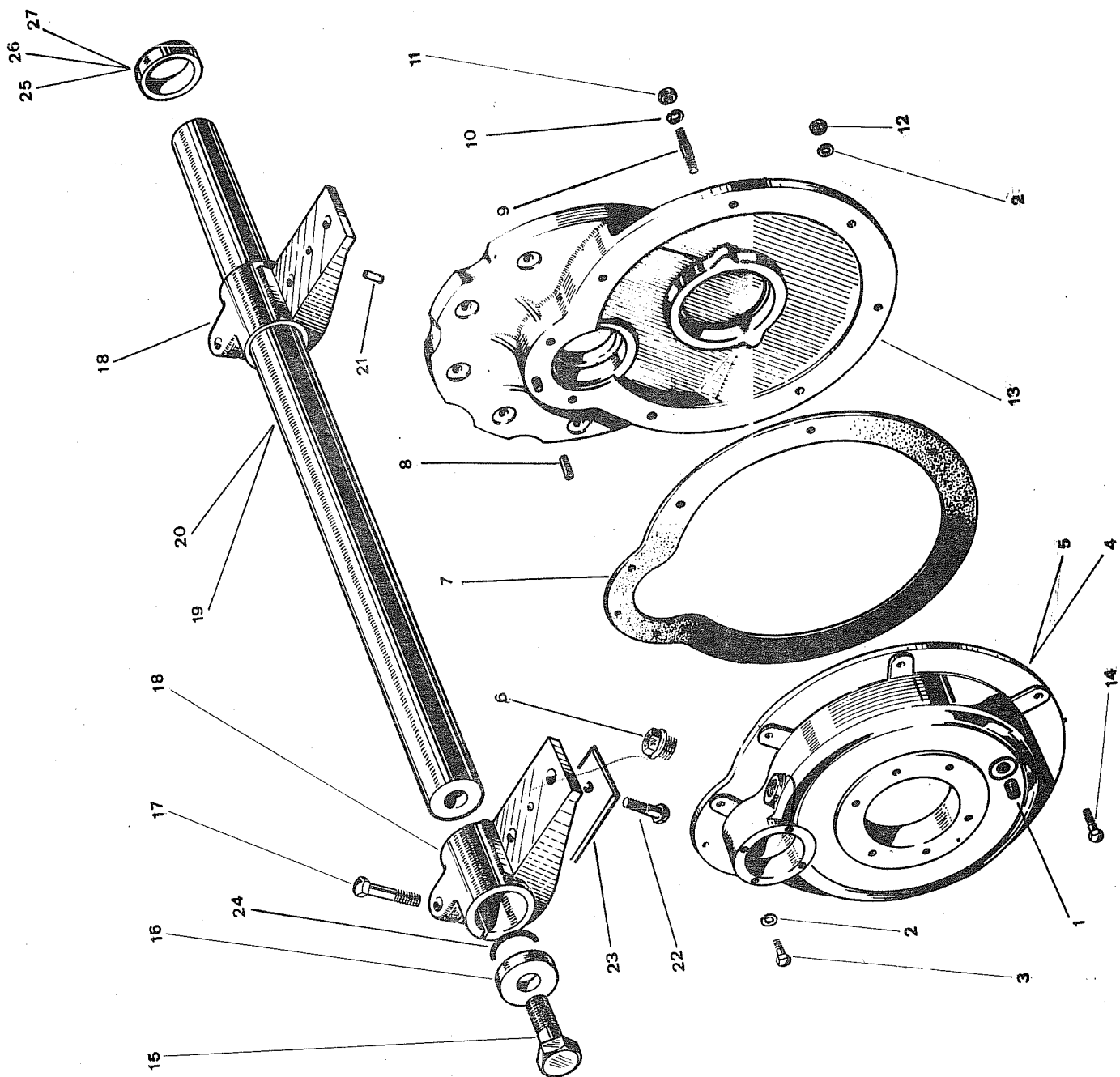
GDS

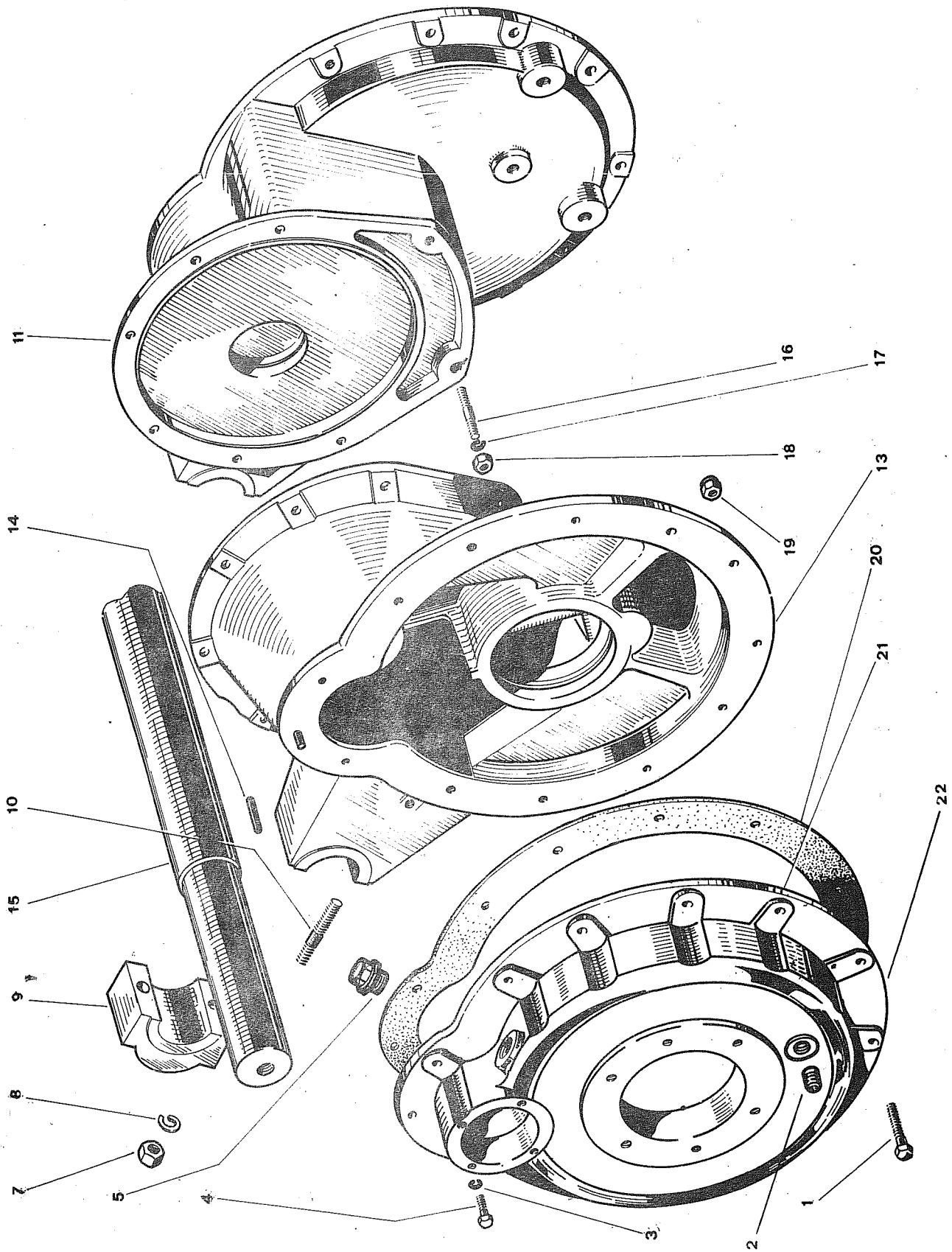












FATTO

Gruppo 230 - PONTE POSTERIORE - REAR CASING
 Sgr. 233 - SCATOLA RIDUTTORE L -REDUCER L CASING

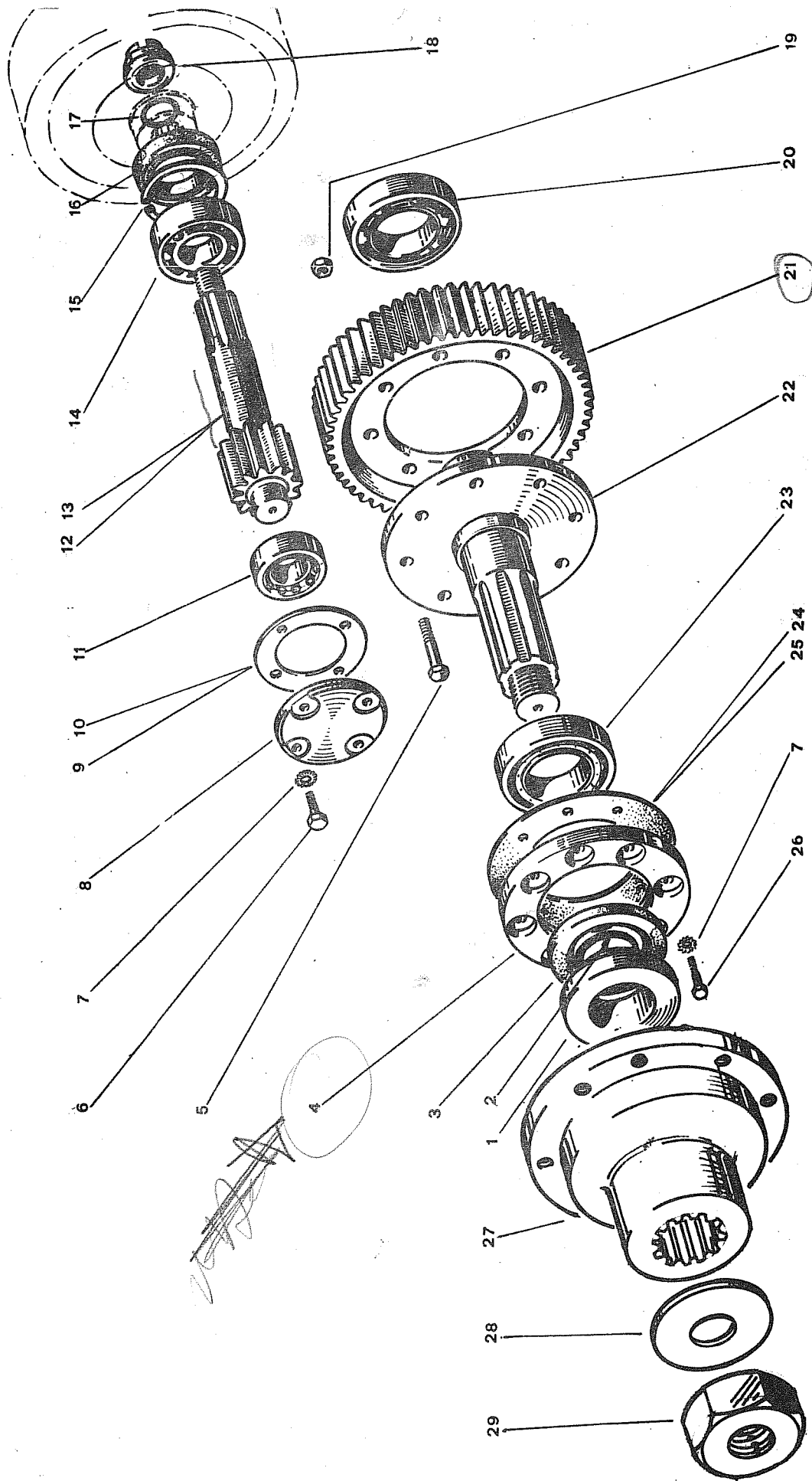
ITMA A 35

TAV.10

1979

FIG.	RIFERIMENTO	MODIF.	DENOMINAZIONE	DENOMINATION	Q	
1	19.0178	•	Vite	Screw	10	6110025
2	49.0121	•	Tappo	Level Cap	4	620428
3	24.0001	•	Rosetta elastica	Spring washer	18	
4	19.0027	•	Vite	Screw	8	6100030
5	100.20.1188	✓	Tappo	Cap	2	650179
6	102.48.0232	✓	Scatola riduttore Ds L	Right reducer L casing ⁶⁵¹⁴⁰⁹	✓ 1	340010424 FT
7	19.0039	•	Dado	Nut	4	6120059
8	24.0014	•	Rosetta elastica	Spring washer	4	
9	100.01.0871	✓	Cappello	Rod lock	2	660088
10	102.20.1457	✓	Prigioniero	Stud bolt	4	660713
11	102.01.2956	✓	Scatola Ds. L	Right L casing	1	651133
12	102.48.0233	✓	Scatola riduttore Sn C	Left reducer L casing ⁶⁵¹⁴⁴⁰	✓ 1	340010425 FT
13	102.01.2957	✓	Scatola Sn. L	Left L casing	1	
14	49.0521	•	Spina elastica	Spring pin	2	6260059
15	100.06.0869	✓	Barra L	L rod	1	660113
16	102.20.2946	✓	Prigioniero	Stud-bolt	4	660716
17	24.0003	•	Rosetta elastica	Spring washer	4	
18	19.0310	•	Dado	Nut	4	6120023
19	19.0028	•	Dado	Nut	10	6120008
20	100.17.0789	✓	Guarnizione	Gasket	2	
21	102.01.3659	✓	Coperchio Ds.	Right cover	✓ 1	102 01 4861
22	102.01.3660	✓	Coperchio Sn.	Left cover ⁶⁵¹¹⁴⁵	✓ 1	102 01 4861 + top
	102174649	✓	Senza guarnizon, Ripulitori = 651277			

GDS



FATTO

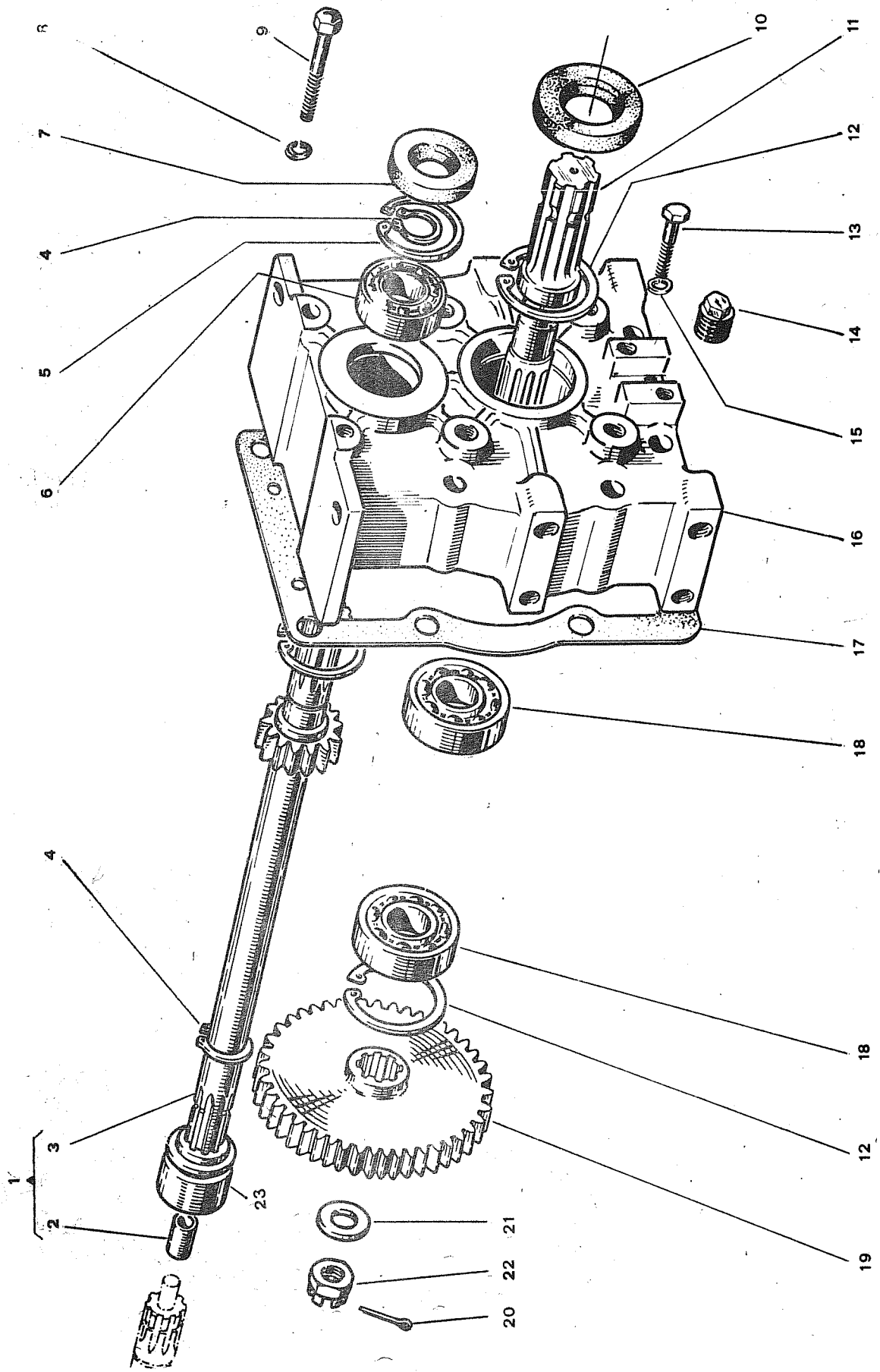
Gruppo 230 - PONTE POSTERIORE - REAR CASING
Sgr. 234 - RUOTISMI RIDUTTORE - REDUCER GEARS

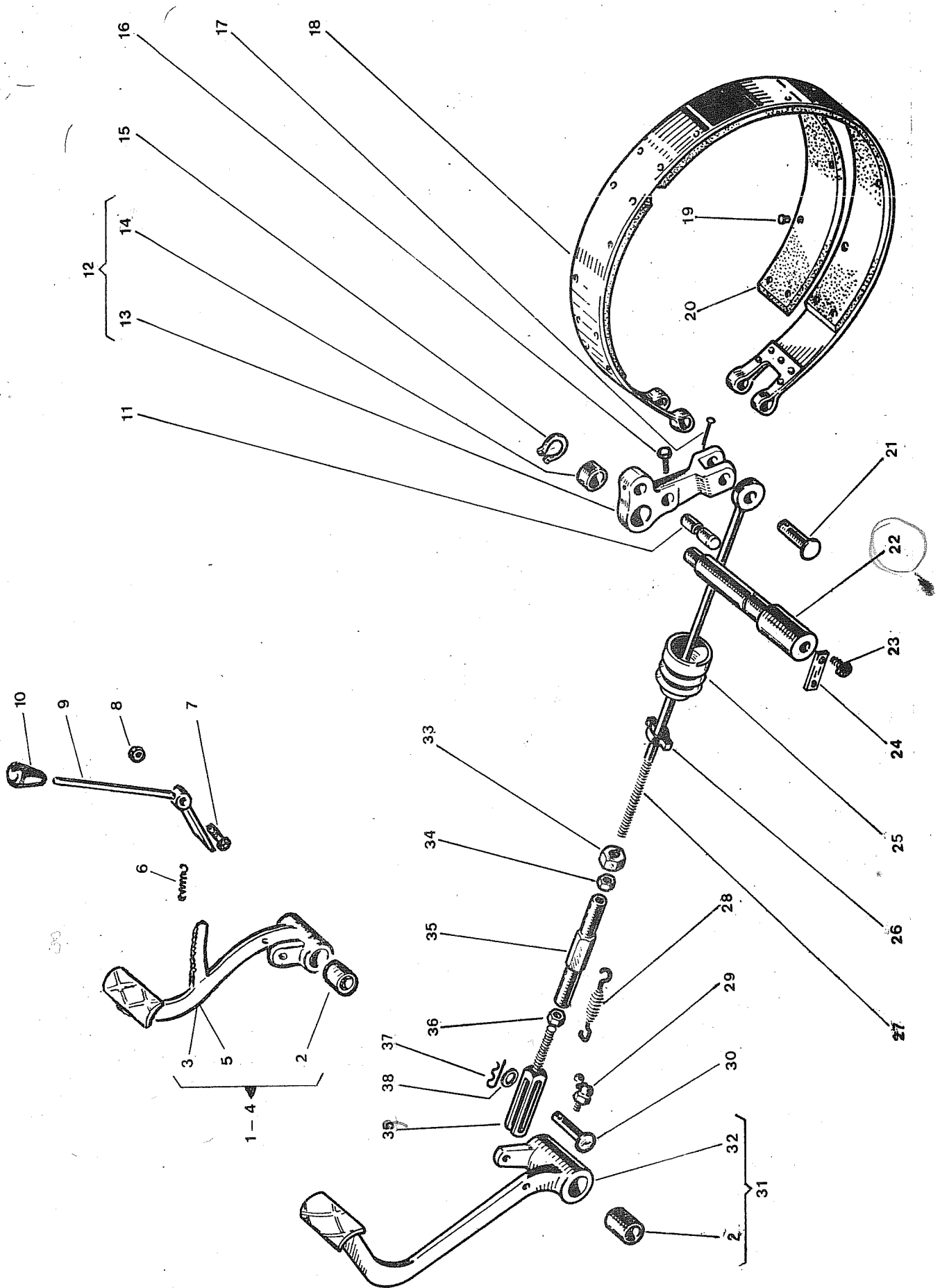
ITMA A 35

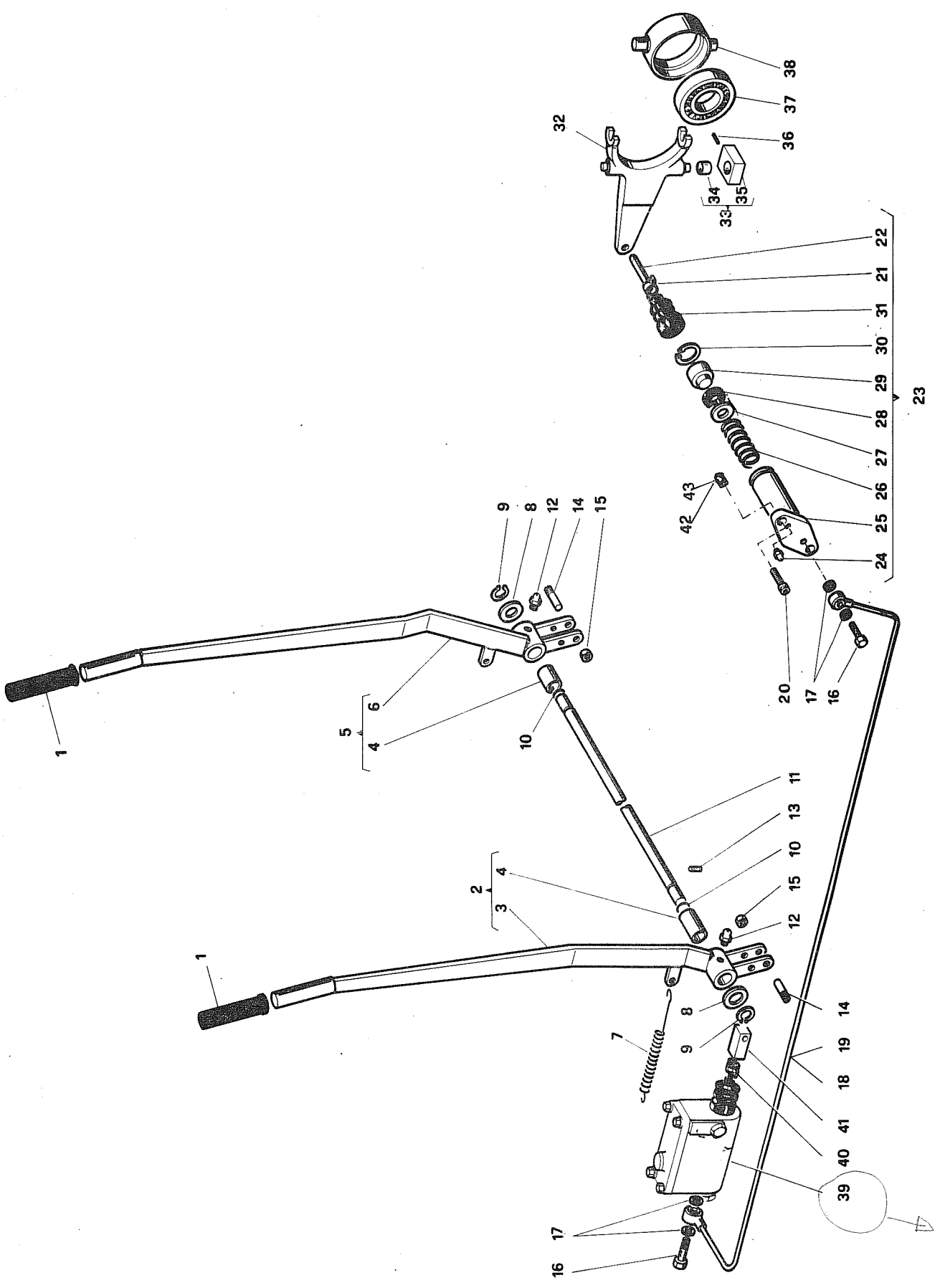
TAV.11

FIG.	RIFERIMENTO	MODIF.	DENOMINAZIONE	DENOMINATION	Q	
1	102.12.2607	✓	Distanziale	Spacer	2	651260
2	13.0123	•	Anello O.R.	O-ring	2	6230131
3	13.0020	•	Anello di tenuta	Seal	2	6220155
4	004.01.1906	✓	Coperchio	Cover	2	650792
5	19.0303	•	Vite	Screw 5110102	16	190303 ✓
6	19.0019	•	Vite	Screw	6	6100020
7	24.0002	•	Rosetta elastica	Spring washer	18	
⑧	102.09.3661	✓	Coperchio	Bearing cover	2	651212
9	102.17.3662	✓	Guarnizione SP 0,2	SP 0,2 gasket	2	651274
10	102.17.4607	✓	Guarnizione SP 0,5	SP 0,5 gasket	2	651275
11	12.0115	•	Cuscinetto	Bearing	2	6200230
12	102.07.2970	✓	Albero S-N	S-N splined shaft	2	651198
13	102.07.2971	✓	Albero L	L Splined shaft	2	651199
14	12.0082	•	Cuscinetto	Bearing	2	6200229
15	14.0013	•	Anello elastico	Elastic ring	2	6240034
16	13.0002	•	Anello di tenuta	Seal	2	6220140
17	13.0183	•	Anello O.R.	O-ring	2	6230103
18	102.20.2969	✓	Dado	Nut	2	660720
19	19.0315	•	Dado	Nut	16	6160132
20	12.0009	•	Cuscinetto	Bearing 6200151	2	627373
21	102.05.2606	✓	Ingranaggio	Gear	2	651163
22	102.05.2260	✓	Asse	Gear rod	2	651162
23	12.0032	•	Cuscinetto	Bearing	2	6200212
24	100.17.0795	✓	Guarnizione SP 0,5	SP 0,5 gasket	3	
25	100.17.0796	✓	Guarnizione SP 0,2	SP 0,2 gasket	3	
26	19.0008	•	Vite	Screw	12	
27	102.05.3406	✓	Mozzo	Hub 551170	2	102053406
28	102.09.2633	✓	Anello di sicurezza	Lock washer	2	651211
29	102.20.2265	✓	Ghiera	Thredded ring	2	651288
	102174649	✓	Senza guarnizioni	Ripulitore		

605





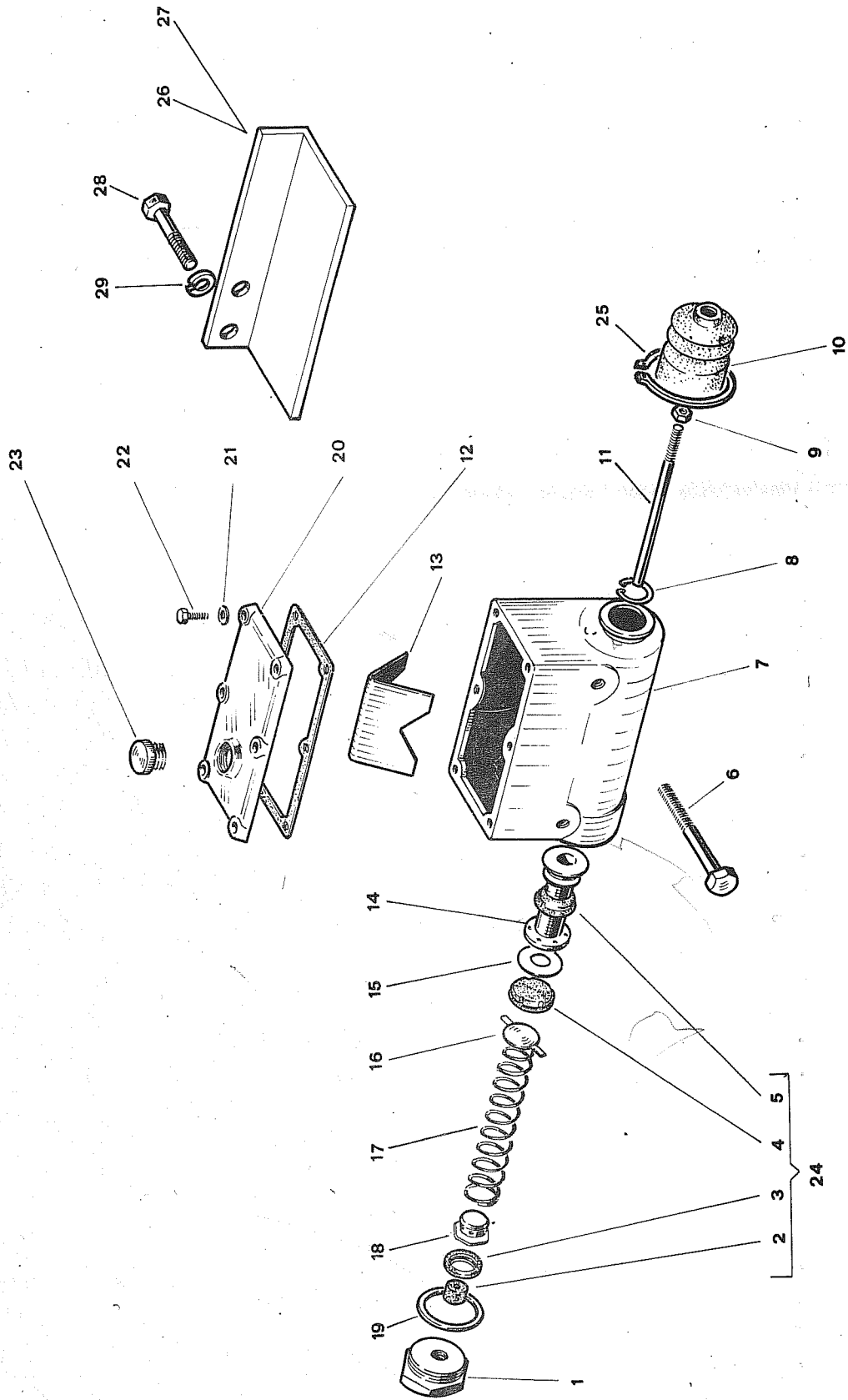


00620484

FARTO

Gruppo	320 - STERZO - STEERING	ITMA A 35
Sgr.	321 - LEVE - LEVERS	
	323 - MARTINETTO - JACK	
	324 - FORCELLA - FORCK	
		TAV.14
		102.141.01 1979

FIG.	RIFERIMENTO	MODIF.	DENOMINAZIONE	DENOMINATION	Q	
1	49.0212	✓	Impugnatura	Handle 620435	2	00620435
2	102.48.0282	✓	Leva Sn. C	Complete left lever	1	
3	102.11.3841	✓	Leva Sn.	Left lever	1	
4	102.16.1277	✓	Boccola	Bush	4	00660693
5	102.48.0281	✓	Leva Ds. C	Complete right lever	1	
6	102.11.3840	✓	Leva Ds.	Right lever	1	
7	102.18.1519	✓	Molla	Spring	2	00660704
8	103.09.3332	✓	Rondella	Washer	2	00660914
9	14.0002	✓	Anello elastico	Elastic ring	2	6240050
10	13.0045	✓	Anello O.R.	O-ring	2	6230027
11	102.06.3017	✓	Asse	Axle	1	00660591
12	15.0008	✓	Ingrassatore	Greaser	2	6390043
13	19.0221	✓	Vite	Screw	1	6140067
14	102.06.3017	✓	Perno	Pin	2	00660591
15	19.0344	✓	Dado	Nut	2	6120047
16	49.0118	✓	Raccordo	Hollow screw	4	6360115
17	49.0547	✓	Guarnizione	Gasket	8	6180059
18	102.27.0162	01 ✓	Tubo destro	Right pipe	1	00660730
19	102.27.0163	02 ✓	Tubo sinistro	Left pipe	1	00660731
20	19.0080	✓	Vite	Screw	4	6130038
21	49.0230	✓	Collare	Oetiker ring	2	6340182
22	100.06.1029	✓	Puntone	Rifter	2	
23	102.48.0013	✓	Martinetto C	Complete jack	2	00660761
24	49.0106	✓	Spurgo	Bleeder screw 620423	2	00620423
25	100.01.1024	✓	Cilindro NFS	Cylinder	2	
26	100.18.1026	✓	Molla	Spring	2	
27	100.09.1027	✓	Rondella	Washer	2	
28	13.0040	✓	Anello di tenuta	Oil seal 620092	2	00620092
29	100.06.1028	✓	Pistone	Piston	2	
30	14.0022	✓	Anello Elastico	Elastic ring	2	6240065
31	49.0117	✓	Cuffia	Rubber protection	2	00620426
32	100.02.1030	✓	Forcella	Fork	2	
33	102.48.0243	✓	Supportino C	Complete support	4	00660766
34	102.16.1285	✓	Boccola	Bush	4	00660694
35	102.08.3551	✓	Supportino	Support	4	00660621
36	49.0202	✓	Spina elastica	Spring pin	4	6260095
37	12.0110	✓	Cuscinetto	Bearing	2	6200201
38	102.11.1956	✓	Manicotto	Sleeve	2	00660664
39	49.0609	✓	Pompa C	Complete pump	2	00620484
40	49.0230	✓	Collare	Oetiker ring	2	6340182
41	102.06.1784	✓	Registro	Adjustment	2	00660588
42	102.06.4595	✓	Distanziale SP.8	Spacer SP.8	4	00660605
43	102.06.4596	✓	Distanziale SP.10	Spacer SP.10	4	00660606



FATTO

Gruppo 320 - STERZO - STEERING
Sgr. 322 - POMPA - DISENGAGING PUMP

ITMA A35

TAV. 15

TAVOLA ESATTA

102.151.01

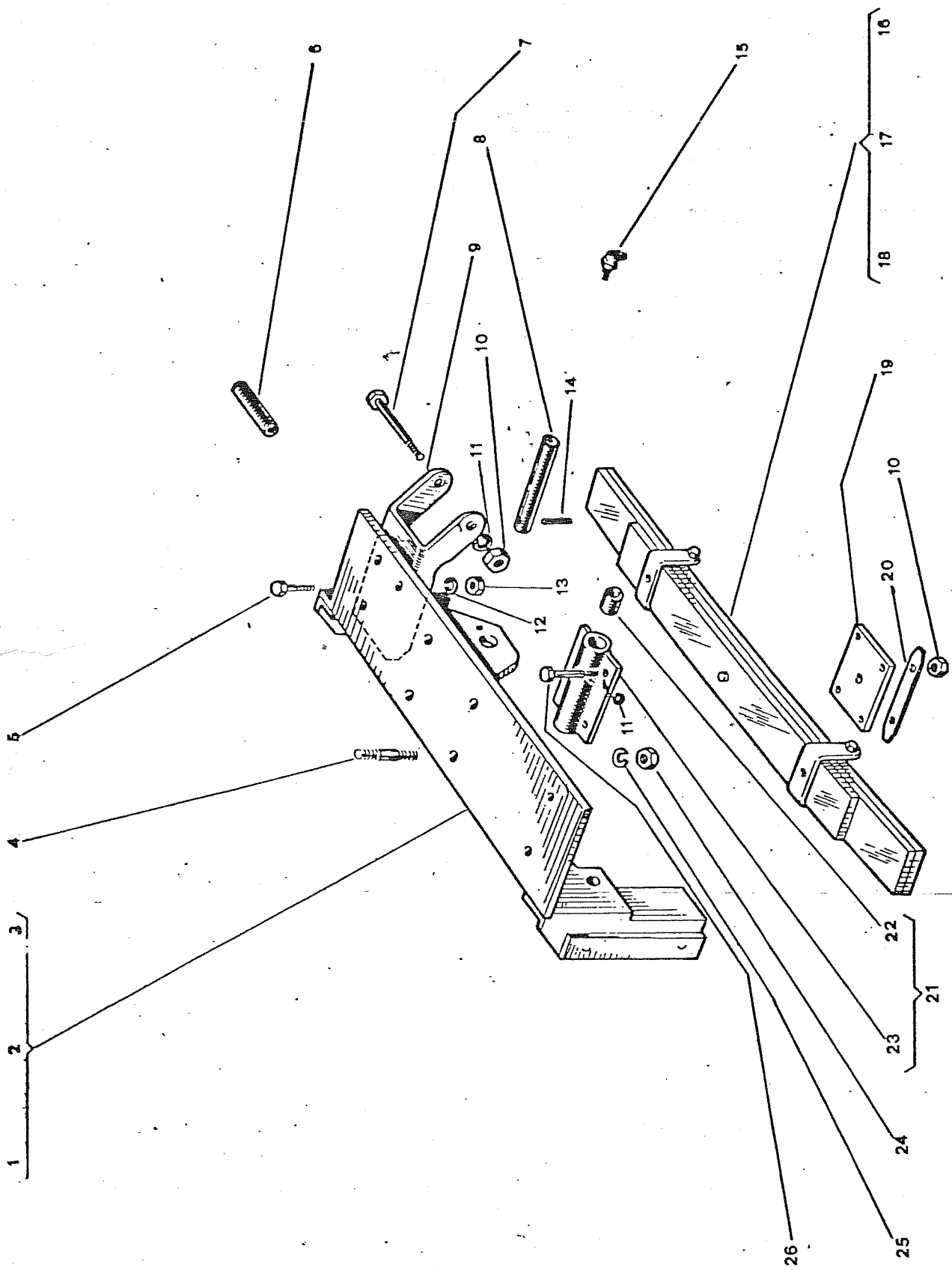
1979

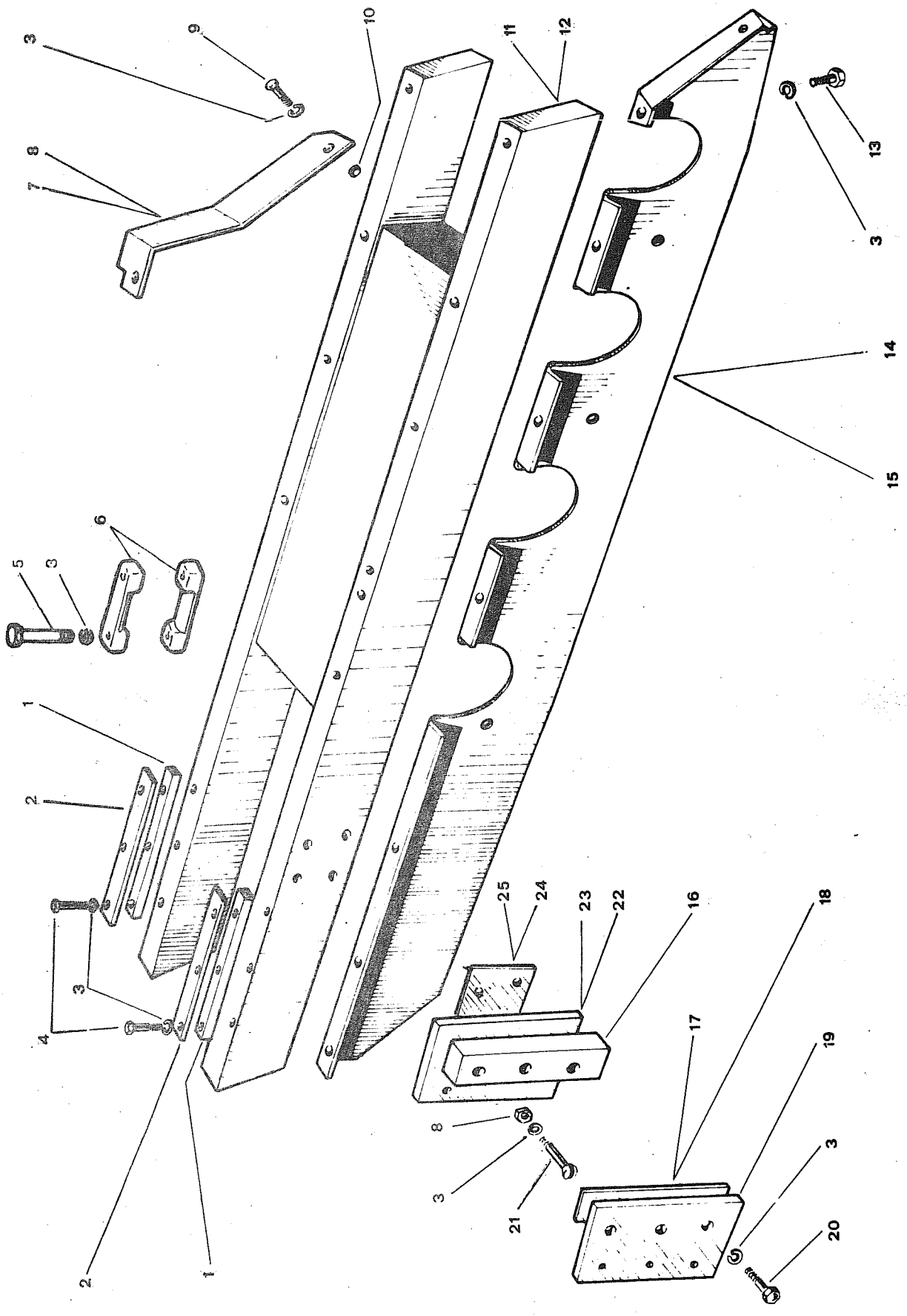
FIG.	RIFERIMENTO	MODIF.	DENOMINAZIONE	DENOMINATION	Q
1	49.0592	✓	Tappo	Cap	2
2	49.0593	✓	Gommino	Rubber	2
3	49.0594	✓	Anello di tenuta	Seal	2
4	49.0604	✓	Guarnizione	Gasket	2
5	49.0602	✓	Anello di tenuta	Seal	2
6	19.0082	✓	Vite	Screw	4
7	49.0597	✓	Corpo pompa	Pump body	2
8	14.0034	✓	Anello elastico	Elastic ring	2
9	19.0003	✓	Dado	Nut	2
10	49.0598	✓	Cuffia	Covering	2
11	49.0599	✓	Puntone	Rod	2
12	49.0600	✓	Guarnizione	Gasket	2
13	49.0601	✓	Lamierino	Sheet	2
14	49.0603	✓	Pistone	Piston	2
15	49.0596	✓	Rondella	Washer	2
16	49.0595	✓	Coperchietto	Cover	2
17	49.0605	✓	Molla	Spring	2
18	49.0606	✓	Tappo	Cap	2
19	49.0558	✓	Guarnizione	Gasket	2
20	49.0607	✓	Coperchio	Cover	2
21	24.0011	✓	Rosetta bisellata	Notched washer	12
22	19.0031	✓	Vite	Screw	12
23	49.0608	✓	Tappo	Cap	2
24	49.0827	✓	Serie guarnizioni	Gasket kit	2
25	14.0017	✓	Anello elastico	Elastic ring	2
26	102.10.4212	✓	Riparo Ds.	Right guard	1
27	102.10.4213	✓	Riparo Sn.	Left guard	1
28	19.0040	✓	Vite	Screw	4
29	49.0002	✓	Rosetta elastica	Spring washer	4

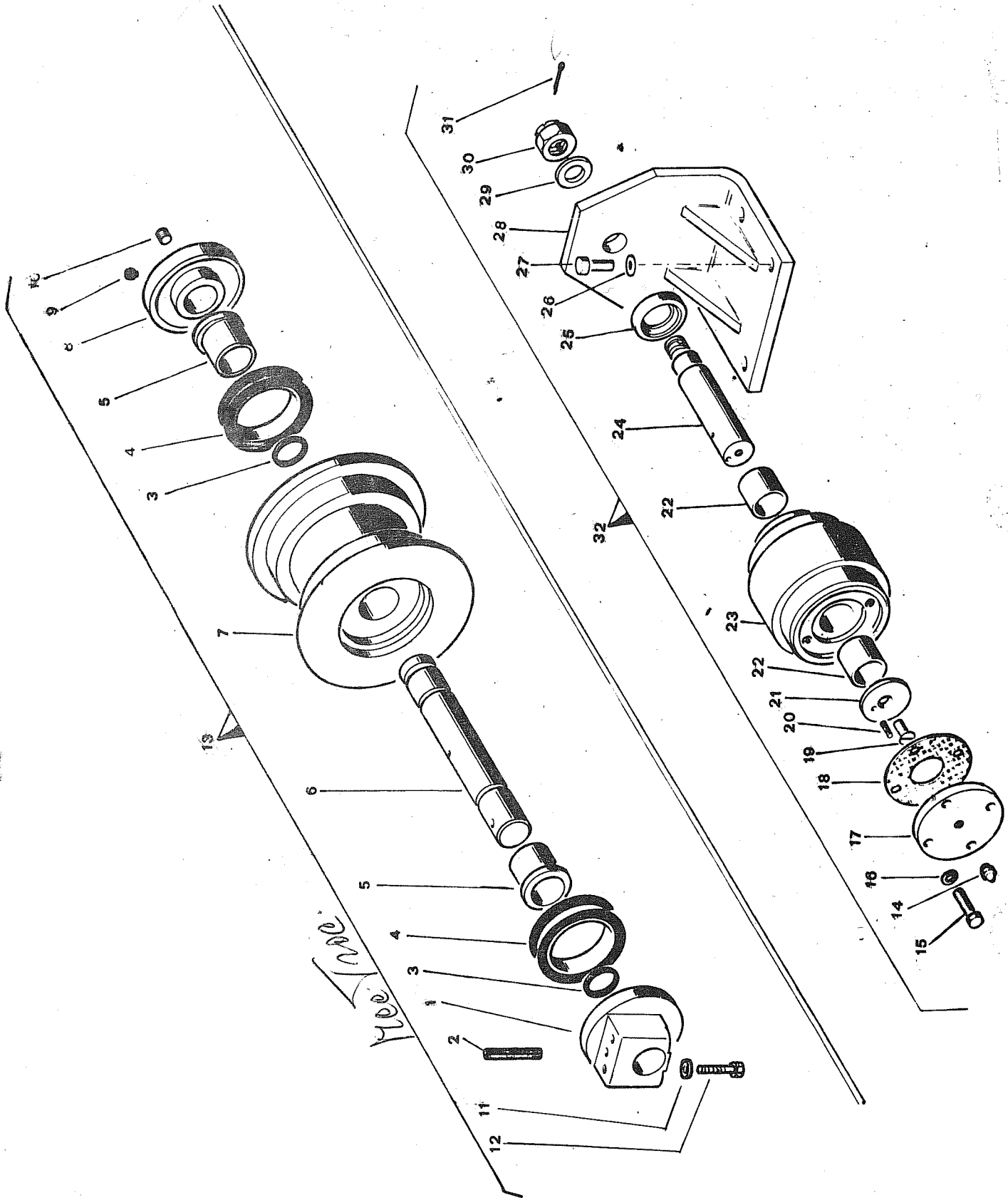
TAVOLA ESATTA

RICORDARE CHE IL CLIENTE PUÒ
CHIAMARE RICORRENDO CON LA TAVOLA
E LA TAVOLA

100



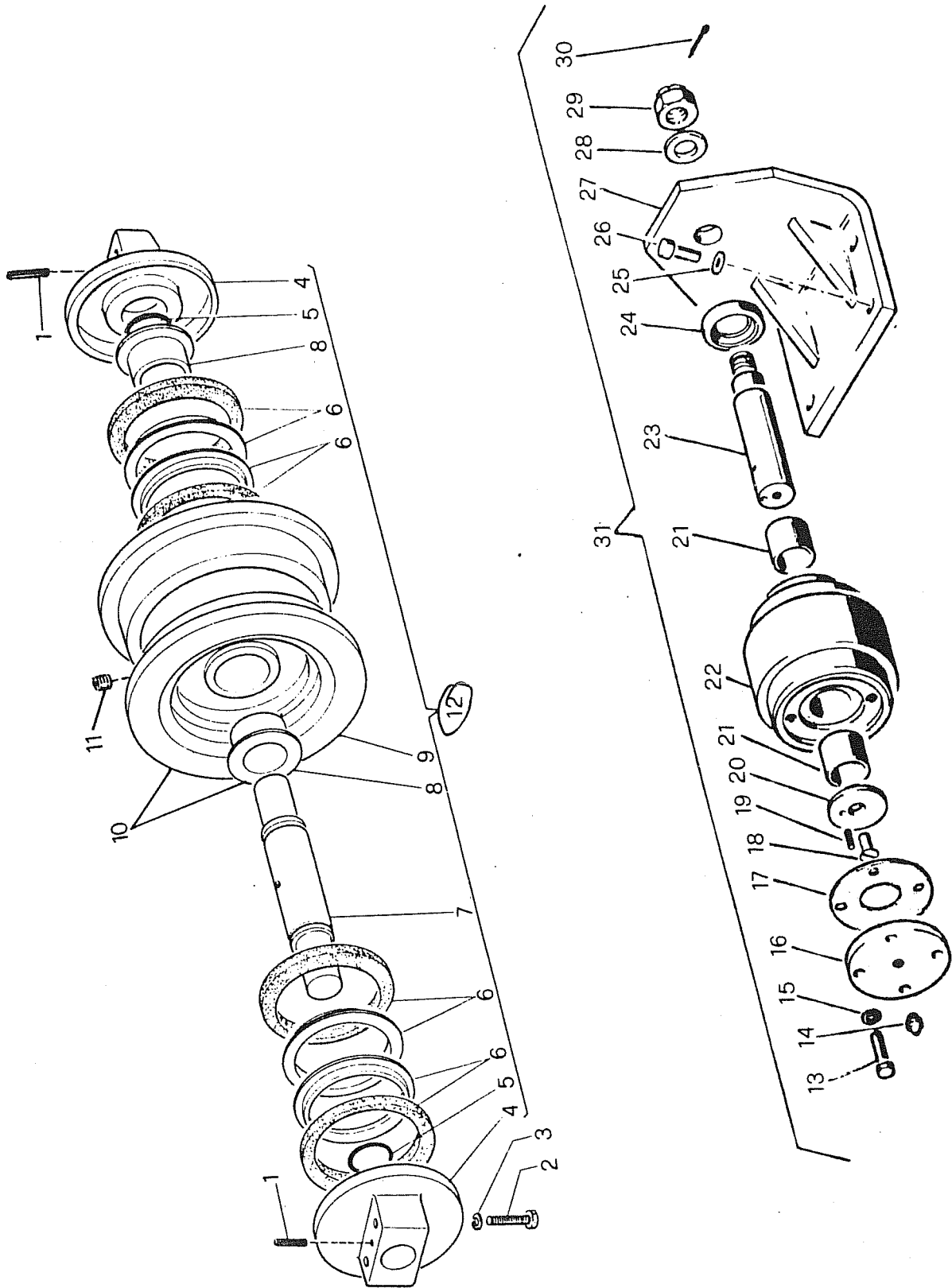




TAV.19

TAV 18 BIS

ITMA A35



TAV 18 BIS 171A ASS FATTO

GRUPPO 420 CINGOLATURA - TRACKS
 SOT. GR. 610 Rulli superiori - Upper rollers
 422 Rulli inferiori - Lower rollers

Titma 3.40

~~TAV 19~~

340.191.01

1983

SIMMEL

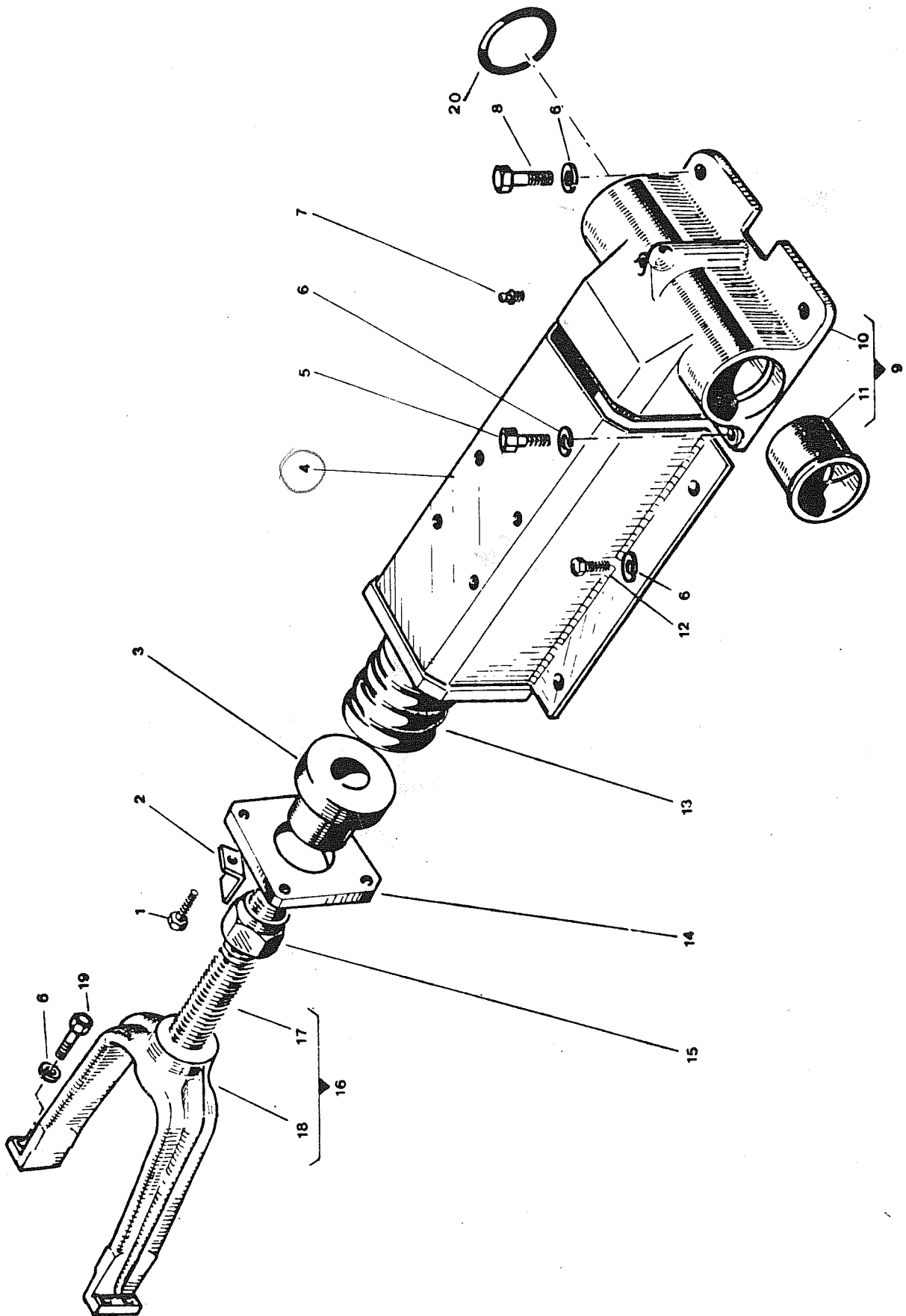
RIF.	CODICE PEZ.	Q	DENOMINAZIONE	DENOMINATION	MOD.
1	49.0151	• 12	Spina elastica	Spring pin	
2	19.0176	• 24	Vite	Screw	
3	24.0001	• 24	Rosetta elastica	Spring washer	
4	340.30.1106.00	• 12	Supporto	Support	
5	13.0256	• 12	Anello OR	O. ring	
6	13.0257	• 12	Gruppo di tenuta	Seal group	
7	340.30.1104.00	• 6	Albero	Shaft	
8	340.16.1103.00	• 12	Boccola rullo inf.	Roller bush	
9	340.30.1105.00	• 6	Corpo rullo inf.	Roller body	
10	340.48.1105.00	• 6	Corpo rullo con bocc	Roller with bush	
11	50.0249.00	• 6	Tappo	Cap	
12	102.48.0131.00	✓ 6	Rullo inf. completo	Complete lower roller	
13	19.0019	• 8	Vite	Screw	
14	15.0004	• 2	Ingrassatore	Greaser	
15	24.0004	• 8	Rosetta elastica	Spring washer	
16	102.09.3639.00	✓ 2	Coperchio	Cover	
17	100.17.0295.00	✓ 2	Guarnizione	Gasket	
18	19.0219	✓ 2	Vite	Screw	
19	49.0010	✓ 2	Spina elastica	Spring pin	
20	102.09.3638.00	✓ 2	Anello di rasamento	Stop ring	
21	102.16.4105.00	✓ 4	Boccola	Bush	
22	102.04.3636.00	✓ 2	Rullo	Upper roller	
23	102.06.3637.00	✓ 2	Asse	Rod	
24	13.0008	✓ 2	Anello di tenuta	Oil seal	
25	24.0017	✓ 8	Rosetta	Washer	
26	19.0027	✓ 8	Vite	Screw	
27	102.11.3723.00	✓ 2	Supporto	Support	
28	24.0012	✓ 2	Rosetta	Washer	
29	19.0035	✓ 2	Dado	Nut	
30	24.0026	✓ 2	Copiglia	Split pin	
31	102.48.0261.00	✓ 2	Rullo superiore c.	Complete upper roller	

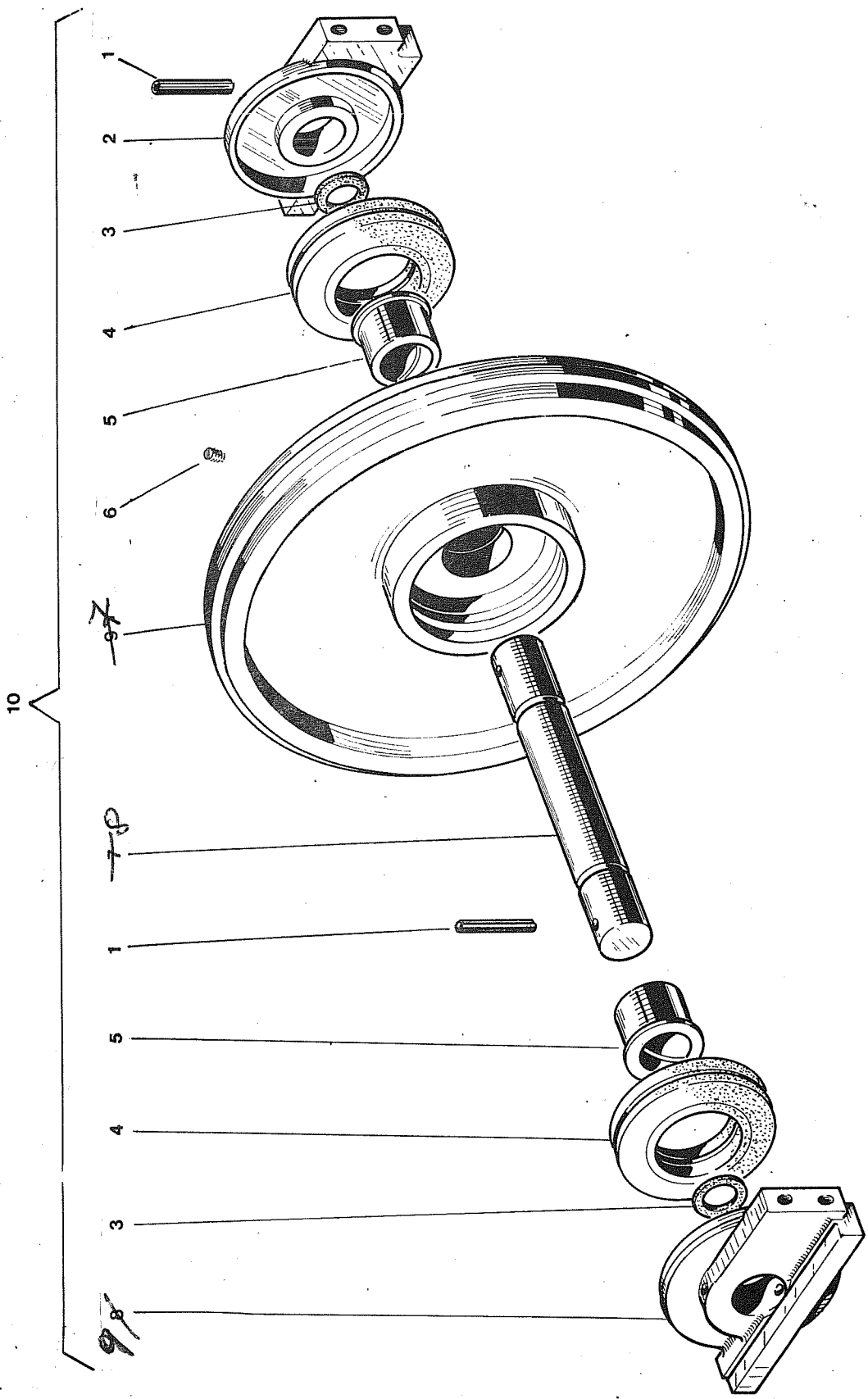
DA MAT. 1011.35 FINO AL 3.40 IN PD1

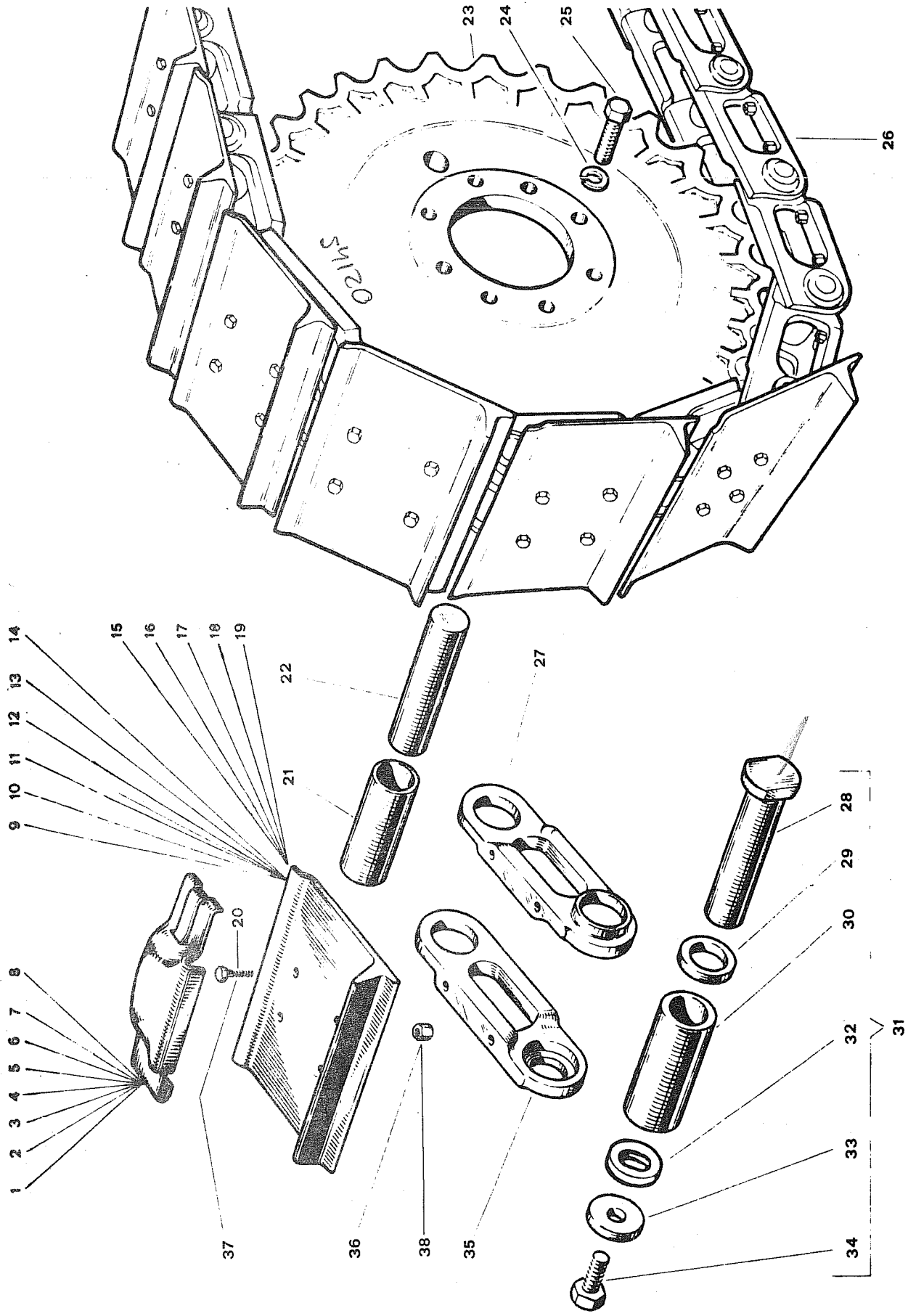
COZZANO E



Titma TRATTO





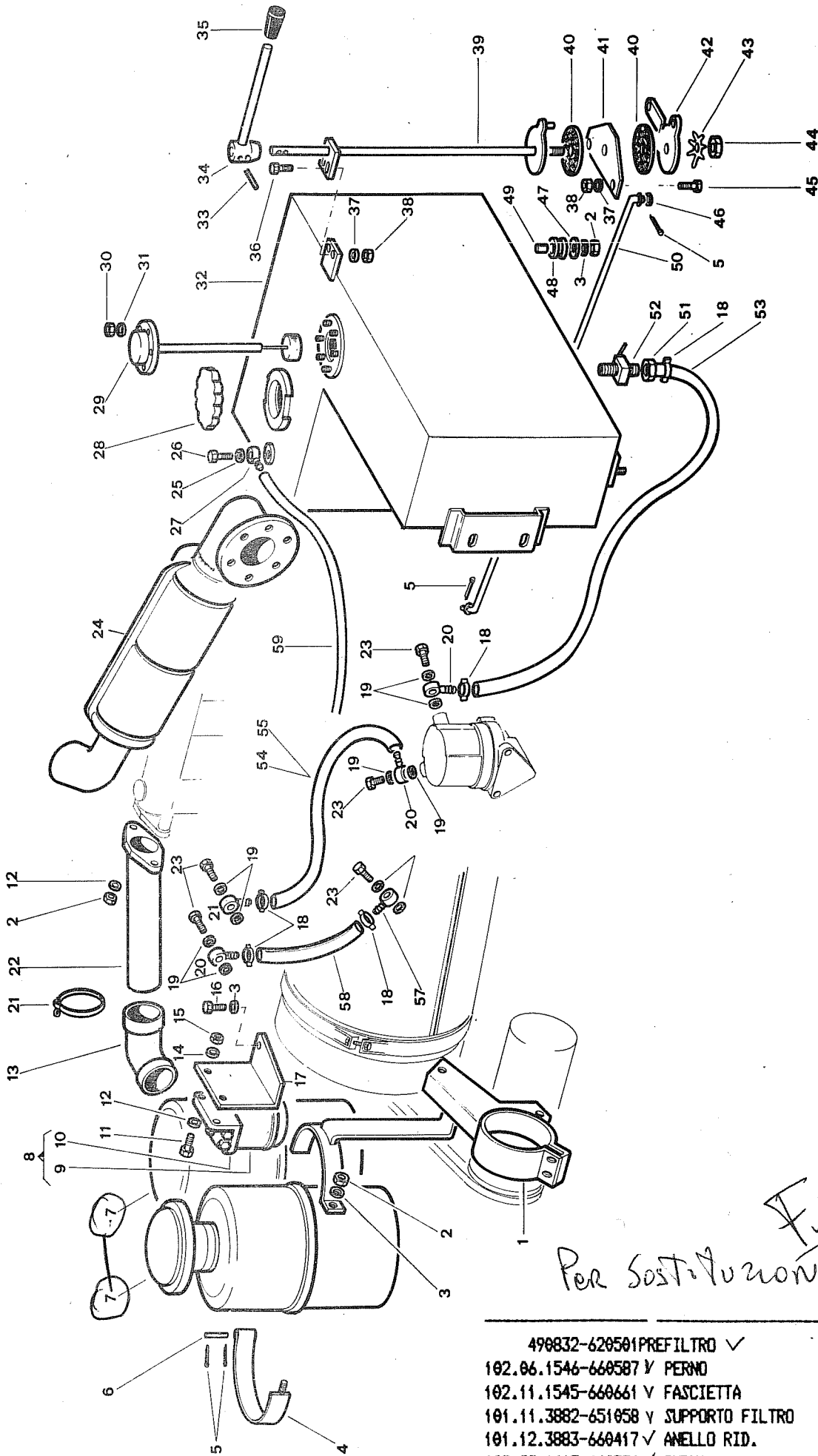


FATTO

Gruppo	420 - CINGOLATURA - TRACKS	ITMA A35	
	Sgr. 426 - RUOTA MOTRICE - DRIVING WHEEL		TAV. 21
	427 - CATENA - CHAIN		

FIG.	RIFERIMENTO	MODIF.	DENOMINAZIONE	DENOMINATION	Q	
1	102.30.2770	✓	Soprasuola Ds. S 170	Right S road pat	14	660 744
2	100.30.0195	✓	Soprasuola Ds. S	Right S road pat	14	660 182
3	100.30.0478	✓	Soprasuola Ds. N 250	Right N road pat	14	660 185
4	001.30.2519	✓	Soprasuola Ds. L 280	Right L road pat	14	660 044
5	102.30.2771	✓	Soprasuola Sn. S 170	Left S road pat	14	660 745
6	100.30.0196	✓	Soprasuola Sn. S	Left S road pat	14	660 183
7	100.30.0479	✓	Soprasuola Sn. N 250	Left N road pat	14	660 186
8	001.30.2619	✓	Soprasuola Sn. L 280	Left L road pat	14	660 045
9	102.30.2763	✓	Suola S L=170	L=170 S shoe	56	660 743
10	102.30.2855	✓	Suola Ds. S L=200/5	L=200/5 right S shoe	28	660 746
11	102.30.2856	✓	Suola Sn. S L=200/5	L=200/5 left S shoe	28	660 747
12	100.30.0187	✓	Suola N L=200	L=200 N shoe	56	
13	100.30.0477	✓	Suola N L=250	L=250 N shoe	56	100 300 477.
14	001.30.2319	✓	Suola L L=280	L=280 L shoe	56	660 043
15	102.30.0874	✓	Pattino Ds. S L=200/5	L=200/5 right S shoe	28	660 740
16	102.30.0875	✓	Pattino Sn. S L=200/5	L=200/5 left S shoe	28	660 741
17	102.30.0876	✓	Pattino N L=200	L=200 N shoe	56	660 742
18	102.30.0045	✓	Pattino N L=250	L=250 N shoe	56	660 738
19	102.30.4618	✓	Pattino L L=280	L=280 L shoe	56	660 752
20	19.0185	•	Vite pattino gomma	Screw 620 228	224	190 417
21	102.30.2876	✓	Boccola	Bush	54	651 320
22	102.30.2875	✓	Perno	Pin	54	651 319
23	102.02.3107	✓	Ruota (02165)	Driving wheel 660 566	2	102 02 4976
24	24.0003	•	Rosetta elastica	Spring washer	16	
25	19.0300	•	Vite	Screw	16	610 0113
26	000.30.0219	✓	Catena A 28 maglie	Chain 650 342	2	340 30 0458 70
27	102.30.2878	✓	Maglia Ds.	Right link 651 322	56	
28	102.30.2881	✓	Perno	Pin	2	NO Perno
29	102.30.2880	✓	Distanziale	Spacer 651 324	4	
30	102.30.2877	✓	Boccola 651 321	Bush mod. 102 30 2876	2	797
31	102.48.0153	✓	Perno C 651 353	Complete toint pivot	2	116
32	100.30.0194	✓	Rondella 651 324	Washer	2	
33	100.30.0193	✓	Rondella 650 937	Washer	2	
34	10.0054	•	Vite	Screw	2	190 054
35	102.30.2879	✓	Maglia Sn.	Left link	56	651 323
36	19.0330 =	•	Dado	Nut 616 0133	224	
37	19.0185	•	Vite	Screw	224	620 228
38	19.0330 =	•	Dado vite pattino	Nut 616 0130	224	190 330

SOS



FATTO
Per sost. Azione 190620

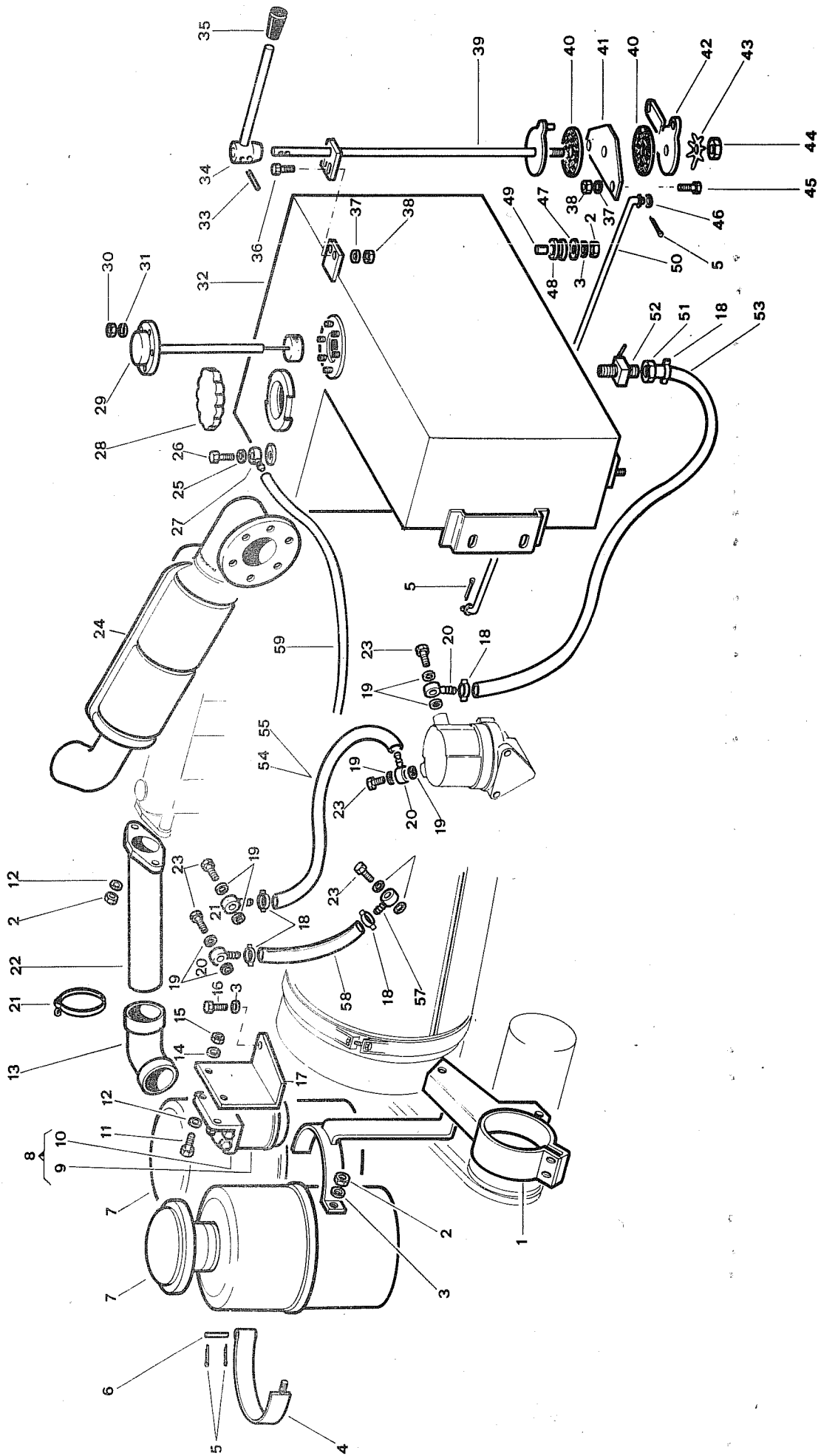
FATTO

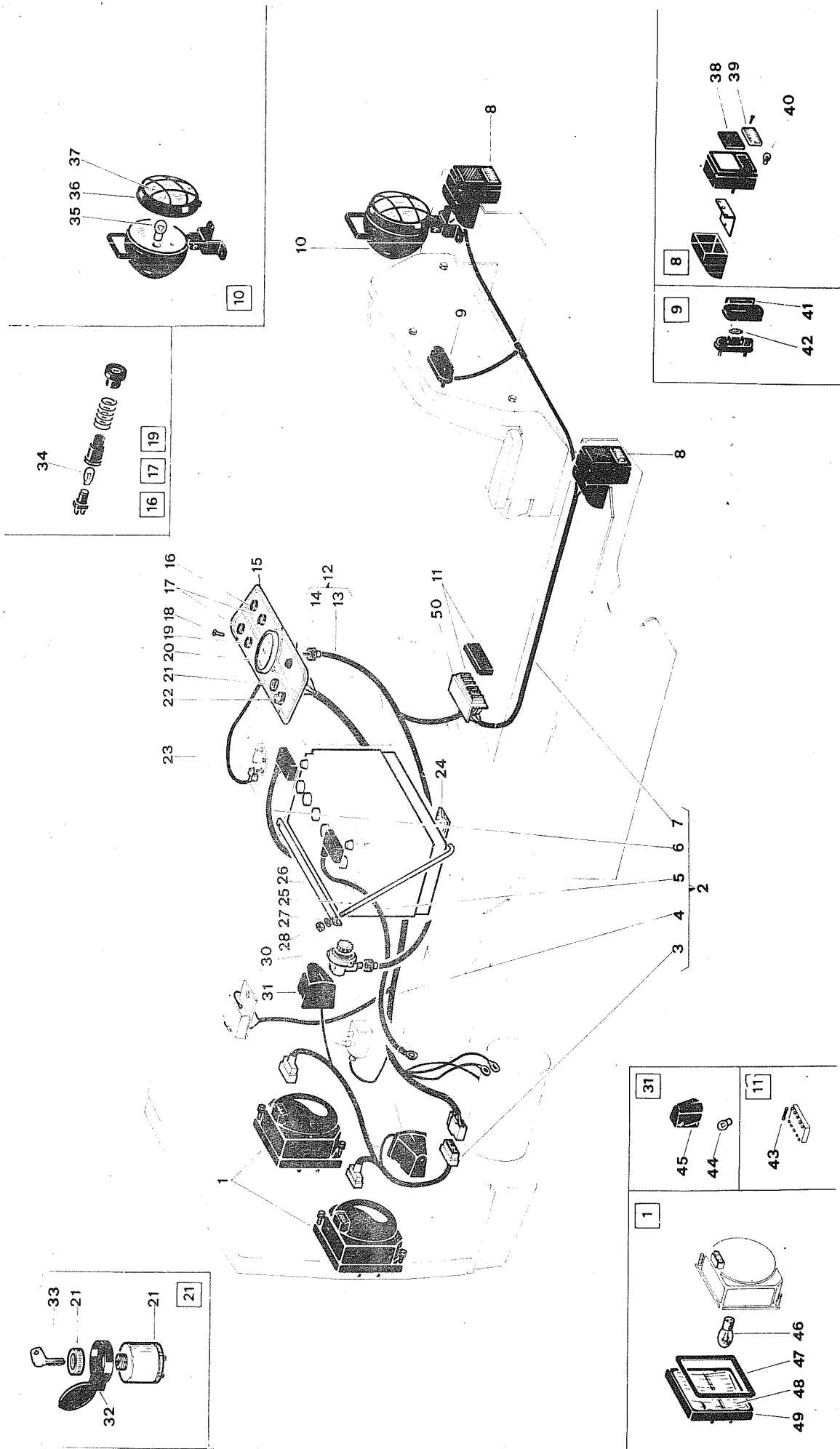
Gruppo	510 - ALIMENTAZIONE SCARICO - FEEDING EXHAUST	ITMA A35
	Sgr.	
	512 - ASPIRAZIONE - SUCTION	102.221.01
	513 - SCARICO - EXHAUST	1979

FIG.	RIFERIMENTO	MODIF.	DENOMINAZIONE	DENOMINATION	Q
1	102.11.4324	✓	Supporto 651250 ✓	Support	1
2	19.0003	•	Dado	Nut	6
3	24.0002	•	Rosetta elastica	Spring washer	7
4	102.11.1545	✓	Fascetta 660661	Clamp	1
5	24.0018	•	Copiglia	Split pin	4
6	102.06.1546	✓	Perno	Pin	1
7	49.0620	✓	Doppio filtro aria	Double air cleaner	1
8	49.0485	✓	Filtro C DM	Complete fuel cleaner	1
9	49.0480	✓	Cartuccia DM	Cartidge	1
10	49.0481	✓	Testata DM	Cleaner top	1
11	19.0027	•	Vite	Screw	2
12	24.0017	•	Rosetta piana	Washer	2
13	102.29.1615	✓	Gomito	Elbow	1
14	24.0001	•	Rosetta elastica	Spring washer	2
15	19.0028	•	Dado	Nut	2
16	19.0019	•	Vite	Screw	1
17	102.10.4326	✓	Supporto	Support	1
18	49.0230	✓	Collare	Oetiker ring	6
19	17.0077	•	Guarnizione	Gasket	8
20	49.0417	✓	Raccordo	Pipe fitting	4
21	49.0027	✓	Fascetta	Clamp	2
22	102.11.4325	✓	Collettore	Air pipe	1
23	49.0110	✓	Vite cava	Bored screw	4
24	102.11.3393	✓	Silenziatore	Silencer	1
25	49.0544	✓	Guarnizione	Gasket	1
26	49.0061	✓	Vite cava	bored screw	1
27	49.0469	✓	Raccordo	Pipe fitting	1
28	49.0267	✓	Tappo	Plug	1
29	200.57.8689	✓	Indicatore riserva	Reserve	1
30	19.0018	•	Dado	Nut	6
31	24.0008	•	Rosetta piana	Washer	6
32	102.11.4341	✓	Serbatoio	Fuel tank	1
33	49.0010	✓	Spina elastica	Spring pin	2
34	102.11.4424	✓	Leva 660674	Lever	1
35	49.0702	✓	Pomello	Handle	1
36	19.0031	•	Vite	Screw	2
37	24.0004	•	Rosetta elastica	Spring washer	2
38	19.0032	•	Dado	Nut	2
39	102.11.4329	✓	Pista	Rod	1
40	102.09.4328	✓	Guarnizione 660632	Gasket	2
41	102.10.4330	✓	Supporto 660654	Support	1
42	102.09.4331	✓	Rinvio 660633	Bach gear	1
43	100.18.0684	✓	Molla 660171	Spring	1
44	19.0114	•	Dado	Nut	1
45	19.0010	•	Vite	Screw	2
46	24.0005	•	Rosetta piana	Washer	2

MODIFICAZIONI
vedi sottostante

FATTO



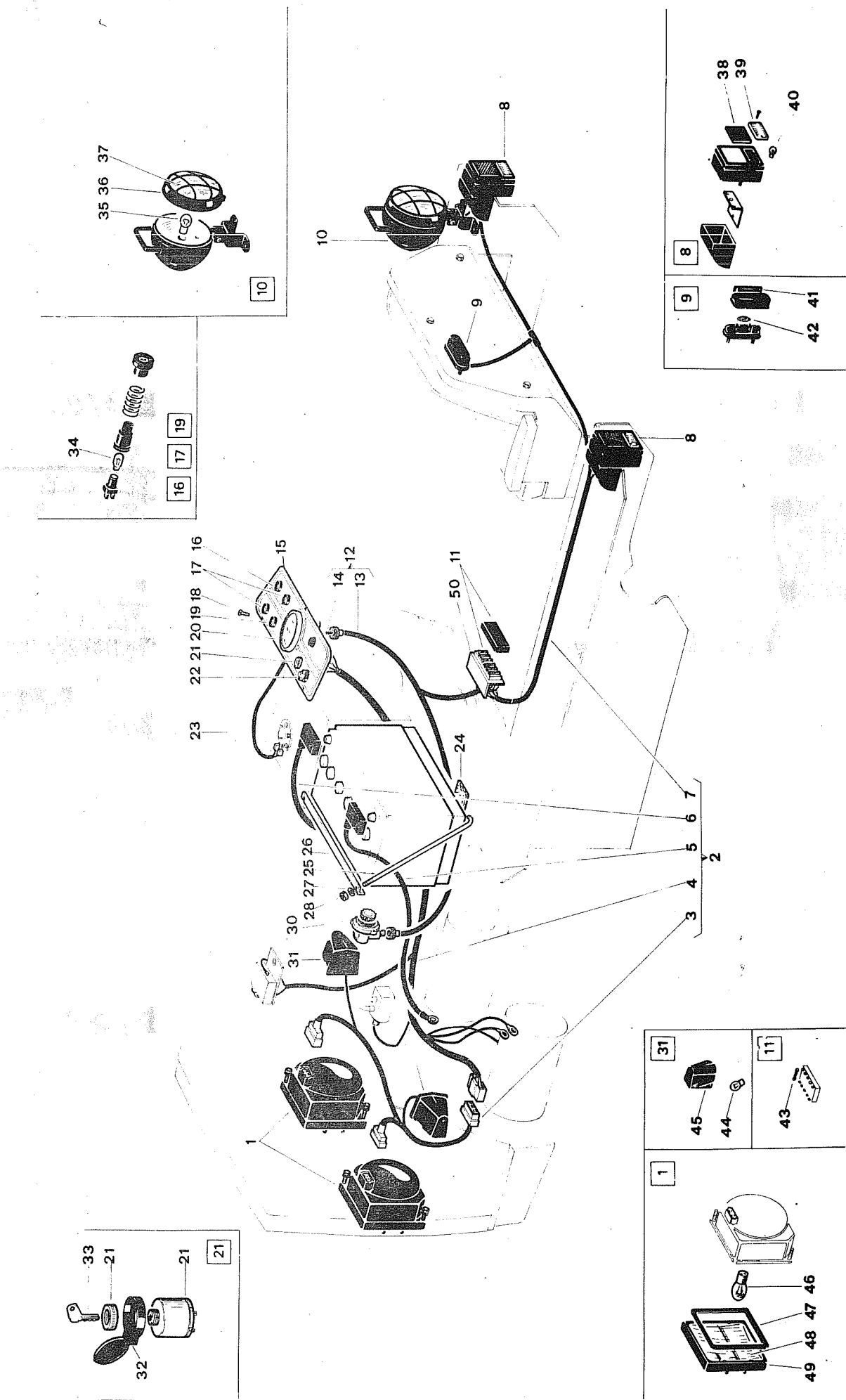


FATTO

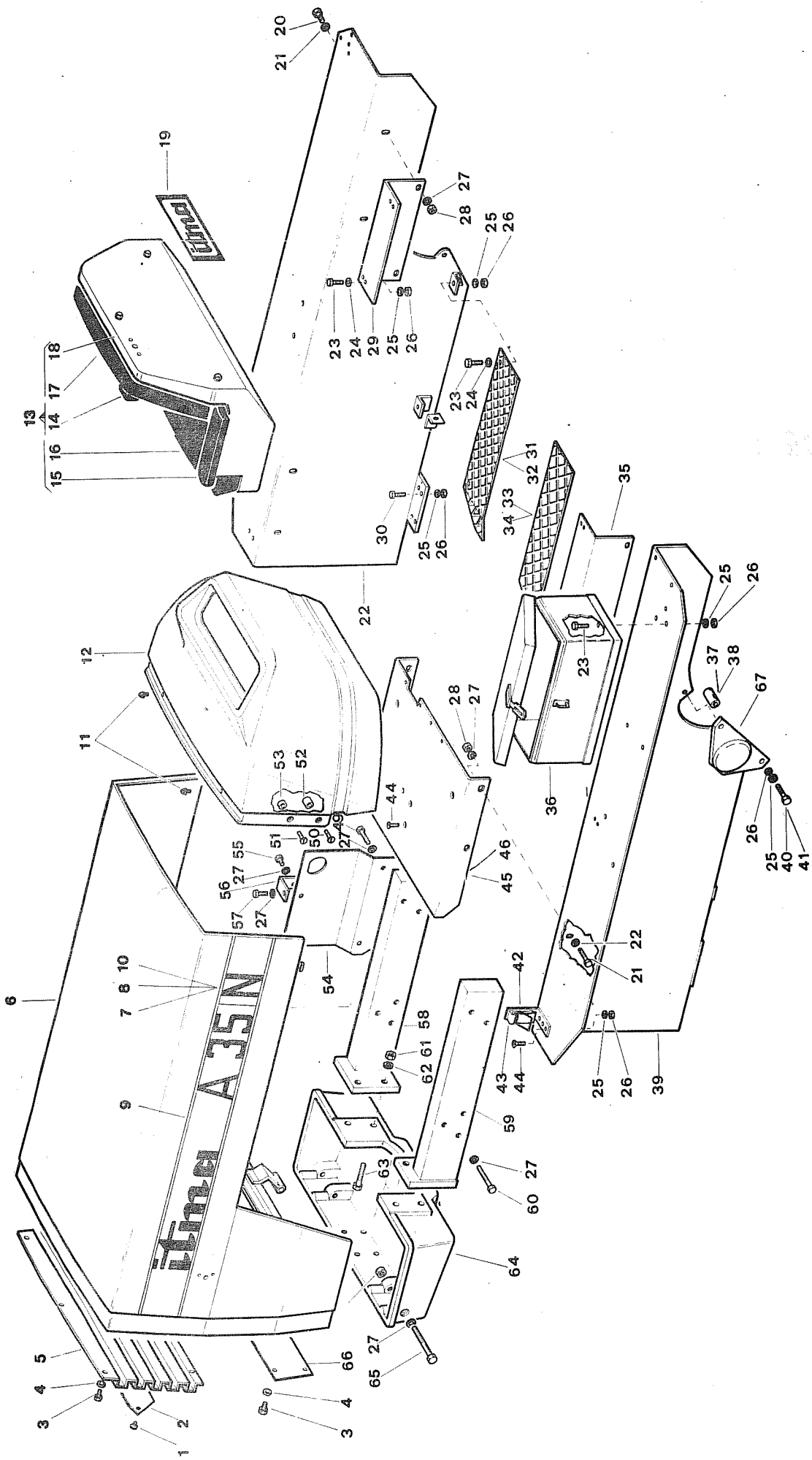
Gruppo	520 - IMPIANTO ELETTRICO - ELECTRIC PLANT	ITMA A 35
Sgr.	521 - AVVIAMENTO - STARTING	
	522 - GENERATORE - GENERATOR	
	523 - ILLUMINAZIONE - LIGHTING	
		TAV. 23
		102.231.01 1979

FIG.	RIFERIMENTO	MODIF.	DENOMINAZIONE	DENOMINATION	Q	
1	20.0065	✓	Faro	Head light	2	
2	102.57.4343	✓	Completo cablaggi	Complete wiring	1	NO Rilevati
3	101.57.4579	✓	Fari anteriori	Head lights wiring	1	
4	102.57.4588	✓	Strumentazione	Control panel wiring	1	
5	102.57.4589	✓	Positivo	Positive wire	1	
6	102.57.4590	✓	Massa	Negative wire	1	
7	101.57.4581	✓	Luci posteriori	Position lights wiring	1	
8	20.0055	✓	Fanalino posteriore	Rear position light	2	✓ 200125
9	20.0106	✓	Luce targa	Number plate light	1	
10	20.0063	✓	Faro posteriore	Head lamp	1	✓ 200120
11	20.0086	✓	Scatola fusibili	Cut out box	1	✓ 200116
12	49.0493	✓	Trasmissione per 870	Revolution counter	1	✓ 102355133
13	49.0523	✓	Guaina	Covering	1	650389
14	49.0511	✓	Cavo	Wire	1	650385
15	200.25.8590	✓	Pannello	Panel	1	✓ Vedi 140 Strumenti 652940
16	20.0105	✓	Spia luci (verde)	Green warning light	1	✓ 200115
17	20.0097	✓	Spia gen/riserva	Red warning light	2	✓ 200113/200114
18	19.0061	✓	Vite	Screw	6	
19	20.0088	✓	Spia olio (gialla)	Yellow warning light	1	✓ 200112 n. 2
20	49.0476	✓	Contagiri 870	Revolution counter	1	✓ 102555211
21	20.0096	✓	Interruttore	Switch	1	→ 2050458
22	20.0095	✓	Commutatore luci	Lights switch	1	
23	102.57.4587	✓	Riserva carburante	Reserve	1	
24	100.29.0632	✓	Guarnizione	Gasket	2	
25	102.06.4086	✓	Tirante	Tie-rod	2	
26	102.08.4247	✓	Staffa	Strap	1	
27	24.0011	✓	Rosetta piana	Washer	2	
28	19.0032	•	Dado	Nut	4	
29	20.0097	✓	Batteria	Accumulator	1	
30	49.0478	✓	Rinvio	Back gear	1	✓ 651341 102.55.0478
31	20.0099	✓	Posizione anteriore	Front position light	2	✓ 200124
32	20.0045	✓	Protezione	Cover	1	
33	20.0035	✓	Chiave	Key	1	✓ 200094
34	20.0110	✓	Lampada	Bulb	1	
35	20.0109	✓	Lampada	Bulb	1	
36	20.1063	✓	Cornice	Frame	1	
37	20.2063	✓	Vetro	Lens glass	1	
38	20.2055	✓	Catadiottro	Red reflector	1	
39	20.1055	✓	Vetro	Lens glass	1	
40	20.0032	✓	Lampada	Bulb	1	
41	20.1106	✓	Vetro	Lensglas	1	
42	20.0108	✓	Lampada	Bulb	1	
43	20.0104	✓	Fusibile	Fuse	5	
44	20.0032	✓	Lampada	Bulb	1	
45	20.1099	✓	Vetro	lensglass	1	
46	20.0030	✓	Lampada	Bulb	1	

FINO A MAT. 1003.35
DA MAT. 1004.35.



70 1082



FATTO

Gruppo 530 - CARROZZERIA - BODY
 Sgr. 531 - COFANO - ENGINE HOOD
 532 - PARAFANGHI SEDILE - MUD GUARD - SEAT

ITMA A 35

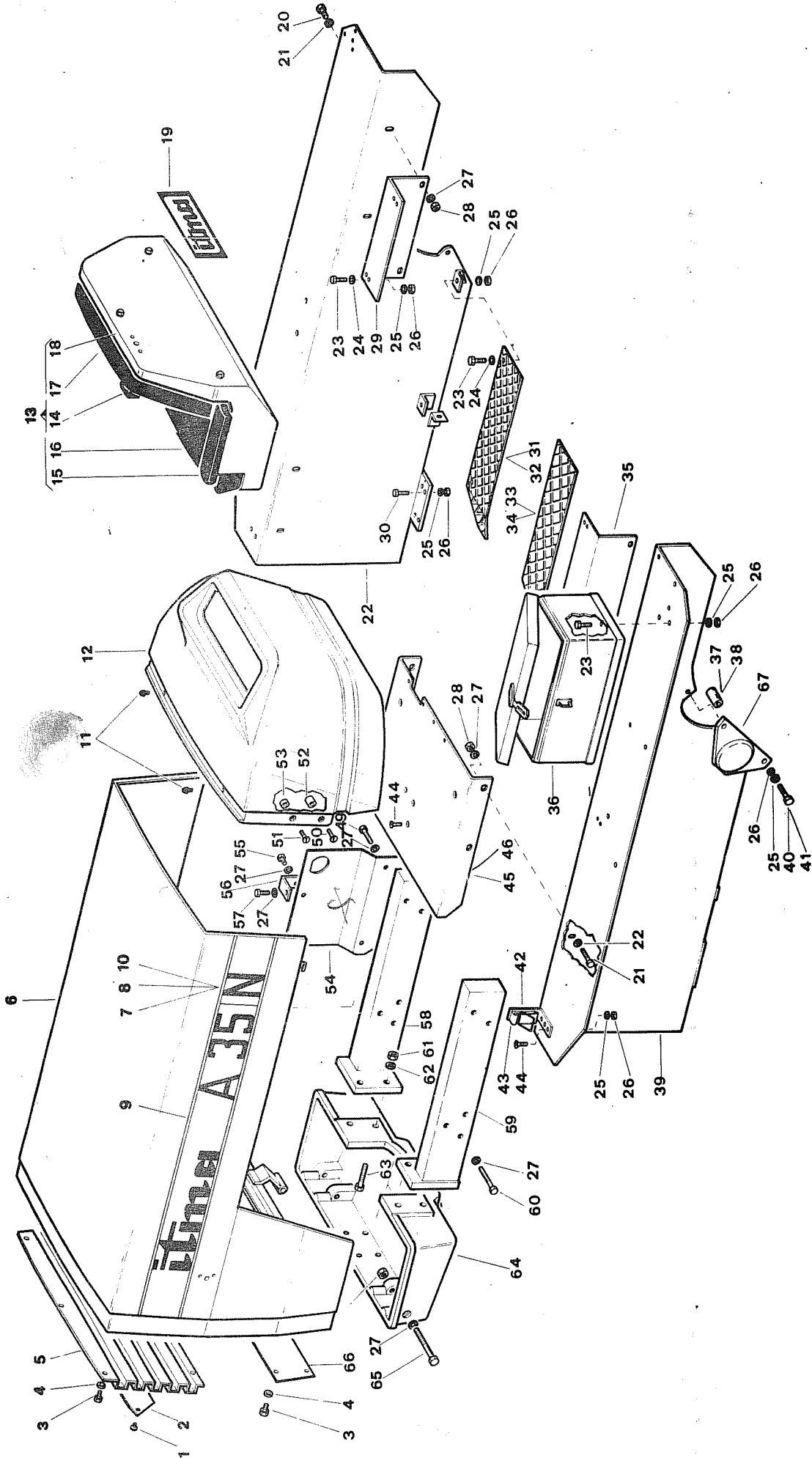
TAV.24

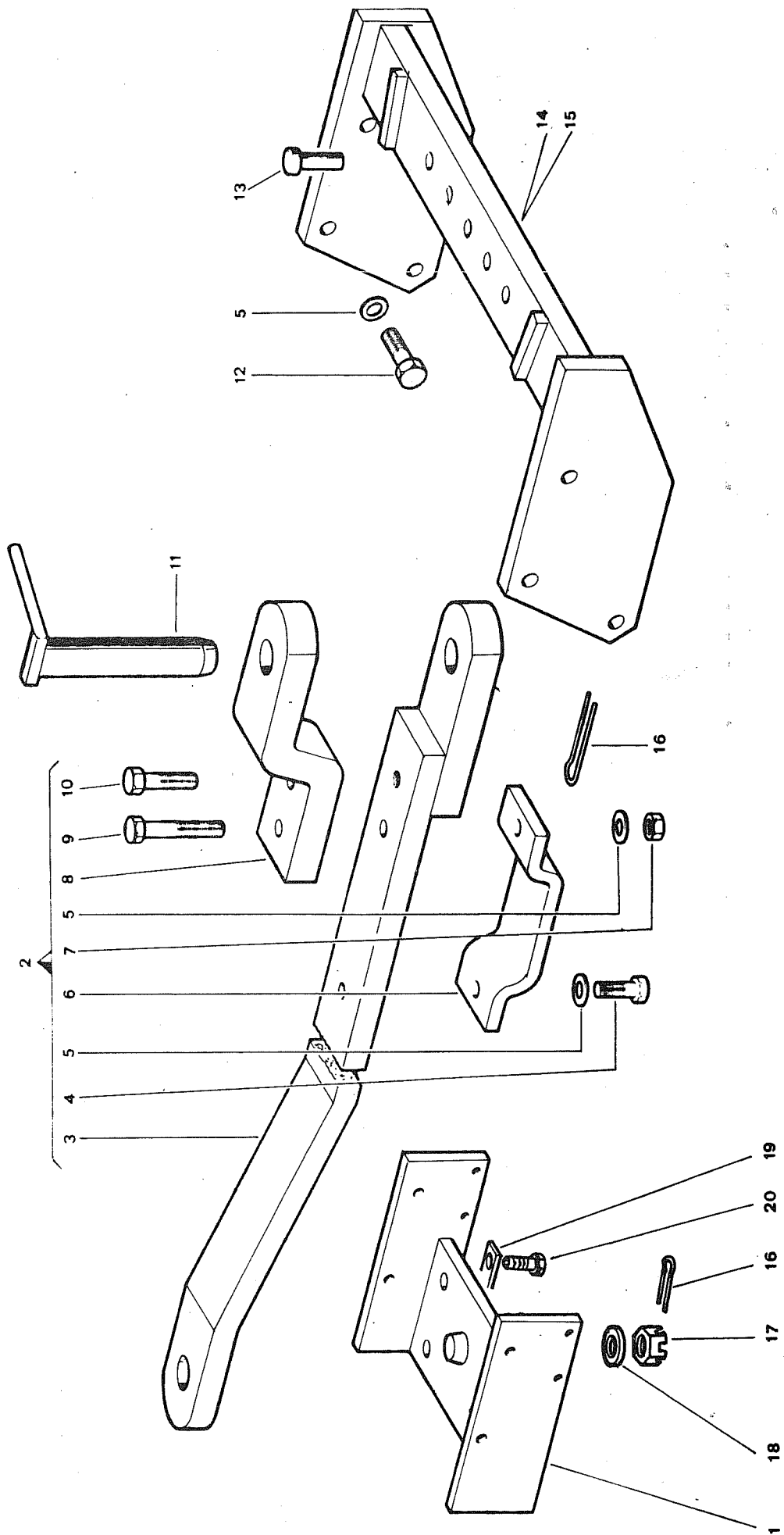
102.241.01

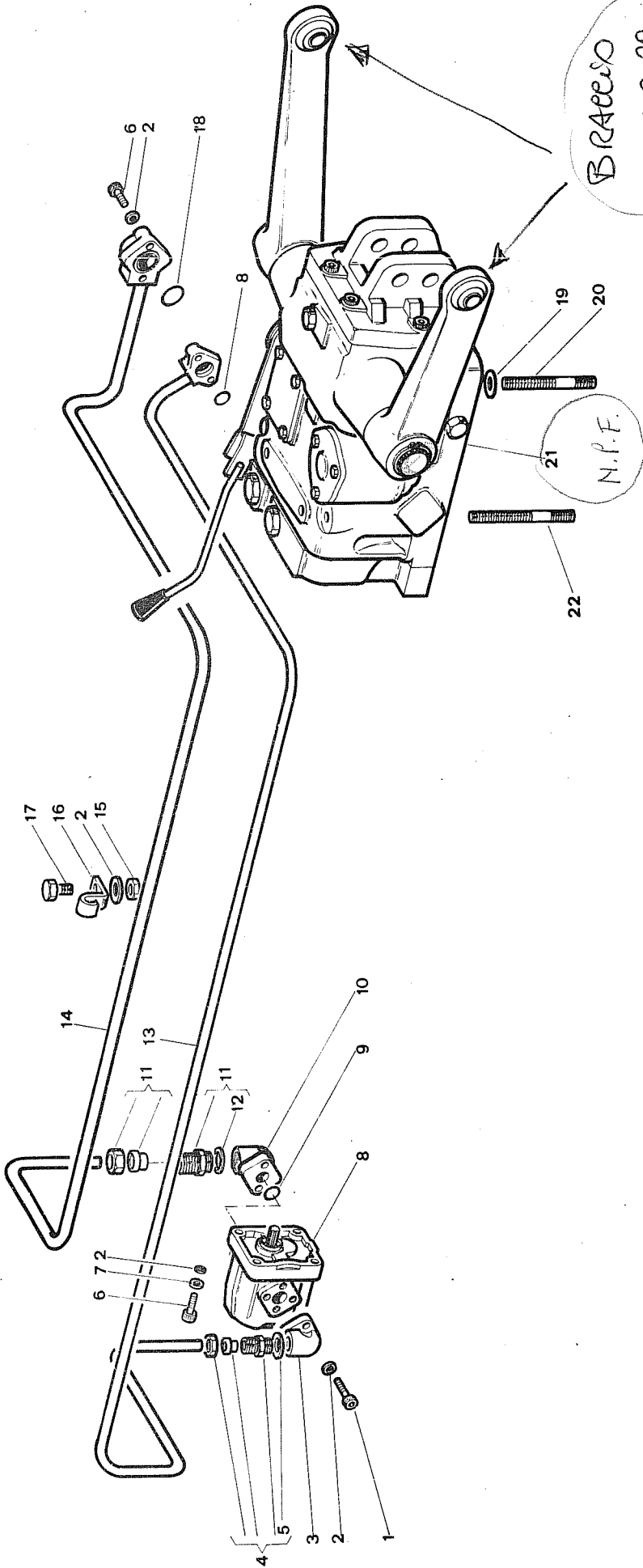
1979

FIG.	RIFERIMENTO	MODIF.	DENOMINAZIONE	DENOMINATION	Q	
1	19.0011	•	Vite	Screw	2	
2	102.25.3766	•	Marchio	Trade mark	1	
3	19.0010	•	Vite	Screw	12	
4	24.0011	•	Rosetta piana	Washer	12	
5	200.10.8551	✓	Mascherina	Cowl	1	
6	102.11.4339	✓	Cofano	Hood	1	
7	102.25.4306	✓	Targa S	S plate	2	
8	102.25.4304	✓	Targa L	L plate	2	
9	102.25.4301	✓	Targa ITMA A 35	ITMA A 35 plate	2	
10	102.25.4305	✓	Targa N	N plate	2	
11	200.29.8580	✓	Puntalino	Rubber bit	2	
12	102.29.4344	✓	Cruscotto 651315	Instrument board	1	661235
13	102.55.4334	✓	Sedile complete	Complete seat	1	20099 85/1
14	102.55.4569	✓	Bracciolo destro 660729	Right arm	1	102 26 4853
15	102.55.4573	✓	Bracciolo sinistro 660729	Left arm	1	102 26 4853
16	102.55.4570	✓	Cuscino 660728	Cushion	1	102 26 4852
17	102.55.4571	✓	Schienale 660727	Back	1	102 26 4851
18	102.55.4572	✓	Sedile	Seat frame	1	102 11 4850
19	102.25.4159	✓	Targa ITMA	ITMA plate	1	
20	19.0001	•	Vite	Screw	8	
21	24.0017	•	Rosetta piana	Washer	8	
22	102.11.4332	✓	Parafango destro	Right mud-guard	1	
23	19.0019	•	Vite	Screw	10	
24	24.0005	•	Rosetta piana	Washer	8	
25	24.0002	•	Rosetta elastica	Spring washer	16	
26	19.0003	•	Dado	Nut	16	
27	24.0001	•	Rosetta elastica	Spring washer	20	
28	19.0028	•	Dado	Nut	8	
29	102.10.4335	✓	Squadretto Ds.	Right strap	1	
30	19.0075	•	Vite	Screw	4	
31	102.10.3468	✓	Pedana Ds. S	Right S foot board	1	
32	102.10.3482	✓	Pedana Ds. N-L	Right N-L foot board	1	
33	102.10.3469	✓	Pedana Sn. S	Left S foot board	1	
34	102.10.3483	✓	Pedana Sn. N-L	Left N-L foot board	1	
35	102.10.4336	✓	Squadretto Sn.	Right strap	1	
36	49.0544	✓	Cassetta	tool-box	1	102 29 4863
37	100.12.0930	✓	Distanziale S	S spacer	2	
38	102.12.3461	✓	Distanziale N-L	N-L spacer	2	
39	102.10.4333	✓	Parafango Sn.	Left mud-guard	1	
40	19.0130	•	Vite S	S screw	2	
41	19.0005	•	Vite N-L	N-L screw	2	
42	102.10.4327	✓	Supporto	Support	2	
43	49.0488	✓	Aggancio	Claw	2	
44	19.0246	•	Vite	Screw	4	
45	102.10.4349	✓	Supporto S	S support	1	
46	102.10.4340	✓	Support N-L	N-L support	1	

FDS







HB. Fornibile solo
KIT GUARNIZIONI

Fino MAT. 932.35 00652266
DA MAT. 933.35 00652307

FATTO

Gruppo	620 - SOLLEVATORE - HYDRAULIC LIFTER	ITMA A 35
Sgr.	621 - POMPA E TUBAZIONI - PUMP AND PIPES	TAV. 26
	622 - STAZIONE SOLLEVAMENTO - HYDRAULIC LIFTER	102.261.01 1979

FIG.	RIFERIMENTO	MODIF.	DENOMINAZIONE	DENOMINATION	Q	
1	19.0140	•	Vite	Screw	4	
2	24.0004	•	Rosetta elastica	Spring washer	13	
3	49.0445	✓	Raccordo	Connection	1	
4	49.0427	✓	Giunzione diritta C	Nipple	1	
5	49.0470	✓	Guarnizione	Gasket	1	
6	19.0146	•	Vite	Screw	8	
7	24.0011	•	Rosetta piana	Washer	4	
8	102.58.4417	✓	Pompa C	Complete pompe	1	203 019 J
9	13.0104	•	Anello O.R.	O-ring	3	
10	49.0444	✓	Raccordo	Connection	1	
11	49.0226	✓	Giunzione diritta C	Nipple	1	
12	49.0551	✓	Guarnizione	Gasket	1	
13	102.27.4348	✓	Tubo mandata <i>Novello</i>	Pipe SAFER	1 ✓	102 27 503 0
14	102.27.4347	✓	Tubo aspirazione <i>Novello</i>	Pipe SAFER	1 ✓	102 27 50 31
15	19.0032	•	Dado	Nut	1	
16	102.08.4426	✓	Staffa	Pipe stop	1	
17	19.0031	•	Vite	Screw	1	
18	13.0061	•	Anello O.R.	O-ring	1	
19	102.09.4320	✓	Spessore	Paching	2	
20	19.0420	✓	Prigioniero	Stud bolt	5	
21	102.32.4345	✓	Sollevatore C <i>Novello</i>	C hydraulic lifte SAFER	1 ✓	102 32 4973
22	19.0415	✓	Prigioniero	Stud bolt	2	
<p>✓ 652 266 KIT <i>guarnizione</i> FINO A MATR. 932.35 NOVELLO 315 ✓</p> <p>✓ 652 302 KIT <i>guarnizione</i> DA MATR. 933.35 SAFER H 35 ✓</p>						
<p>TIPO SAFER - FORO FISSAGGIO ϕ 14 = UGUALE AL 3.45</p> <p>TIPO NOVELLO " ϕ 10 tel. 0444/555043</p>						

GDS

